

 **MCC
THEATER**

SOHO REP's

WOLF PLAY

in collaboration with MA-YI THEATER COMPANY



Our 2022-2023 Season is dedicated
to MCC Theater's Founding
Co-Artistic Director
BOB LUPONE
(1946-2022).



BERNIE TELSEY and **WILL CANTLER** / artistic directors
BLAKE WEST / executive director

presents

SOHO REP's
WOLF PLAY

by **HANSOL JUNG**

in collaboration with Ma-Yi Theater Company

with **CHRISTOPHER BANNOW, ESCO JOULÉY,
BRIAN QUIJADA, NICOLE VILLAMIL, MITCHELL WINTER**

scenic design
**YOU-SHIN
CHEN**

costume design
**ENVER
CHAKARTASH**

lighting design
**BARBARA
SAMUELS**

sound design
**KATE
MARVIN**

puppet design
**AMANDA
VILLALOBOS**

prop design
**PATRICIA
MARJORIE**

fight direction
**HANNAH
"ROCK"
ROCCISANO**

puppet coach
**LAKE
SIMONS**

production stage
manager
**KASSON
MARROQUIN**

original casting
**STEPHANIE
YANKWITT, CSA &
TBD CASTING CO.**

additional casting
**THE TELSEY OFFICE
KARYN CASL, CSA**

directed by
DUSTIN WILLS

general
manager
**BETH
DEMBROW**

director of
finance
**LIZ
OLSON**

director of
development
**ANNE
MYERS**

director of marketing
& audience services
**ABIGAIL
LANGSTED**

director of production
& facilities
**STEVE
ROSENBERG**

manager of artistic
production
**AYANA
PARKER-
MORRISON**

manager of artistic
development
**ELISSA
HUANG**

manager of musical
programming &
development
**SCOTT
GALINA**

publicity
**MATT ROSS PR /
MATT ROSS,
NICOLE CAPATASTO,
LIZ LOMBARDI,
GRACE WALKER**

Presented in the **SUSAN & RONALD FRANKEL THEATER**

WOLF PLAY received its New York premiere at Soho Rep., New York, NY
Sarah Benson, Cynthia Flowers, Meropi Peponides, Directors of Soho Rep

WOLF PLAY was originally commissioned and produced by Artists Repertory Theatre
Dámaso Rodríguez, Artistic Director Sarah Horton/JS May, Managing Director, Portland, Oregon

WOLF PLAY was produced as a National New Play Network Rolling World Premiere by Artists Repertory Theater
(Oregon), Mixed Blood Theatre Company (Minnesota), and Company One Theatre (Massachusetts) (etc.)
For more information please visit www.nnpn.org

Funding for closed caption performances is provided, in part, by a grant from NYSCA/TDF TAP Plus.

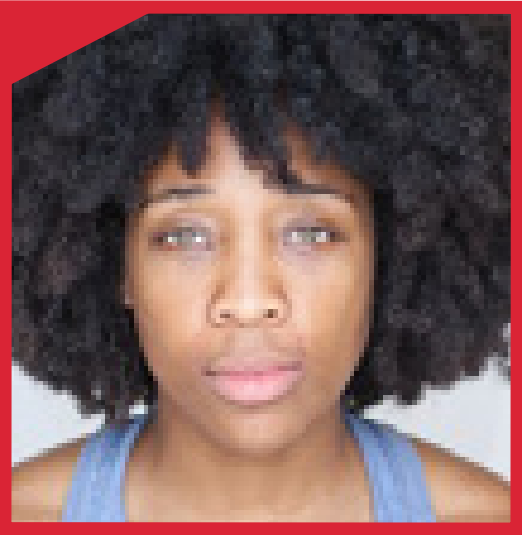
CAST

Peter.....**CHRISTOPHER BANNOW**
Ash..... **ESCO JOULÉY**
Ryan.....**BRIAN QUIJADA**
Robin **NICOLE VILLAMIL**
Wolf **MITCHELL WINTER**

assistant stage manager..... **MALIE FUJII**
fight captain.....**CHRISTOPHER BANNOW**



CHRISTOPHER BANNOW



ESCO JOULÉY



BRIAN QUIJADA



NICOLE VILLAMIL



MITCHELL WINTER

WHO'S WHO

HANSOL JUNG (*Author, she/her/hers*) Productions: WOLF PLAY (Artist Rep, Soho Rep), WILD GOOSE DREAMS (Public Theater, La Jolla Playhouse), CARDBOARD PIANO (Humana Festival), AMONG THE DEAD (Ma-Yi), and NO MORE SAD THINGS (Sideshow, Boise Contemporary). Commissions: Public Theater (NY), Kennedy Center, Playwrights Horizons, La Jolla Playhouse. Residencies/Fellowships: Hodder, Royal Court, NYTW, Berkeley Repertory, MacDowell, Hedgebrook, Sundance Theatre Lab, and Page 73. Awards: Steinberg Award, Whiting Award, DGF Award, Helen Merrill Award. TV: "TALES OF THE CITY" (Netflix), "PACHINKO" (Apple +). Hansol is a proud member of the Ma-Yi Writers Lab, NYTW's Usual Suspects, and The Kilroys. MFA: Yale School of Drama.

DUSTIN WILLS (*Director*) Upcoming: ROMEO & JULIET (NAATCO/Two River), John J. Caswell's WET BRAIN (Playwrights Horizons/MCC), Jeremy O Harris' A BOY'S COMPANY PRESENTS: TELL ME IF I'M HURTING YOU (Hauser + Wirth) Recent: Kate Tarker's MONTAG (Soho Rep), Phillip Howze's FRONTIÈRES SANS FRONTIÈRES (Bushwick Starr—named a Top Ten Theatrical Production of 2017 by New York Magazine), and AWFUL EVENT (Baryshnikov Arts Center Residency). Recent opera: Handel's ALCINA, Mozart's DIE ZAUBERFLÖTE and Stravinsky's **СОЛОВЕЙ**. Dustin has devised new work with Teatro L'Arciliuto in Rome, Italy, created large-scale puppetry pageants with Creative Action, trained with Augusto Boal in Theatre of the Oppressed legislative performance, and for a couple of years gave rogue tours of the Vatican. He is a Princess Grace Award recipient, as well as a Drama League and Boris Sagal directing fellow. MFA: Yale School of Drama

CHRISTOPHER BANNOW (*Peter*) is elated to be returning to WOLF PLAY after only making it to tech in March 2020. He appeared in the Broadway and 1st National Tour production of Daniel Fish's OKLAHOMA!, as well as the Broadway and West End production of THE ELEPHANT MAN starring Bradley Cooper. Off-Broadway credits include THE HAIRY APE (Park Avenue Armory), ALAMAT (Ma-Yi Theater), and SLEEP NO MORE. Regional: Center Theater Group, Williamstown, Yale Rep, Huntington, McCarter, Berkshire Theatre Group, Kennedy Center. Film/TV: "THE LATE LATE SHOW", THE THREE CHRISTS, #SCREAMERS, NOT FADE AWAY. Boston University and Yale School of Drama. For Hart. @hellobannow

ESCO JOULÉY (Ash) is an actor, singer, dancer, clown, movement artist, and creator. Recent credits include Sundance STATE OF THE UNION, Starz BLINDSPOTTING, HBO's HIGH MAINTENANCE, Netflix INVENTING ANNA, Hulu's MONSTERLAND and Bravo's IN A MAN'S WORLD, where they appeared as a movement coach. Esco's theatre credits include: AS YOU LIKE IT, RUNAWAYS, GALATEA, THE DEMISE

WHO'S WHO

(Magic Theater Player), BEOWULF. Esco was a resident actor at the historic Barter Theater for three and a half years and is an alum of the ABC Discovers Showcase. More information about Esco and their work can be found at @escojouley, and @onezlife.

BRIAN QUIJADA (*Ryan, he/him*) is an Emmy-nominated playwright, composer and actor. Off-Broadway credits include BOBBIE CLEARLY at Roundabout Theater, OEDIPUS EL REY at The Public Theater, MY MAÑANA COMES at Playwrights Realm, and WHERE DID WE SIT ON THE BUS? at Ensemble Studio Theatre (Drama Desk nominated for Outstanding Solo Performance). Select Regional credits: Actors Theatre of Louisville, Victory Gardens, The Kennedy Center, Geva Theater, City Theatre Pittsburgh, and appeared in the World Premiere of Hansol Jung's NO MORE SAD THINGS at Boise Contemporary Theater. TV Credits: "LAW & ORDER SVU," "BLUE BLOODS," "MANHATTAN LOVE STORY," and "SEARCH PARTY." www.brianquijada.com

NICOLE VILLAMIL (*Robin*) NETWORK (Broadway); WOLF PLAY (Soho Rep); QUEENS (LCT3); HOW TO LOAD A MUSKET (59E59); MUD (Boundless Theatre); Shakespeare's R&J (Hangar Theatre); DE PROFUNDIS (PlayMakers Rep); TELL ME I'M NOT CRAZY, THE ROSE TATTOO (Williamstown Theatre Festival); THE HUNCHBACK OF SEVILLE, THE LOVE OF THE NIGHTINGALE (Trinity Repertory Co.). Education: M.F.A., Brown/Trinity Repertory Co.

MITCHELL WINTER (*Wolf*) is thrilled to reprise his role in WOLF PLAY following its run at Soho Rep. Additional credits: DRACULA (dir. David Auburn, Berkshire Theatre Group), THE IMPORTANCE OF BEING EARNEST (dir. David Auburn, BTG), FRONTIERES SANS FRONTIERES (dir. Dustin Wills, Bushwick Starr), A WINTER'S TALE (dir. Liz Diamond), A DOCTOR IN SPITE OF HIMSELF (dir. Christopher Bayes), AMERICAN NIGHT: THE BALLAD OF JUAN JOSE (dir. Shana Cooper, Yale Rep), SLEEP NO MORE (Punchdrunk), Cameron Mackintosh's MISS SAIGON (dir. Laurence Connor, Australian National Tour), THOROUGHLY MODERN MILLIE (dir. Roger Hodgman, The Production Company), MISS JULIE, TARTUFFE and DRUNK ENOUGH TO SAY I LOVE YOU (Yale Summer Cabaret), NORMATIVITY (dir. Mia Walker, NYMF), DIE FLEDERMAUS (dir. John Milson, Australian Opera Studio) and JOSEPH...DREAMCOAT (dir. Stephen Pimlott, Really Useful). Film/TV credits include: "MR. ROBOT" (USA Network), "OH JEROME NO" (FX), IF NOT LOVE (official Sundance selection). MFA: Yale School of Drama.

YOU-SHIN CHEN (*Scenic Design*) is a USA-based Taiwanese scenic designer who is committed to diversity and humanity. You-Shin centers humans, both the characters and the viewers, and their experiences in her process of creating a three-dimensional space. She

WHO'S WHO

is the recipient of the 2019 Daryl Roth Creative Spirit Award at The Lilly Awards, the Lucille Lortel Awards for Outstanding Scenic Design in 2020, and the Connecticut Critics Circle Awards for Outstanding Scenic Design in 2022. Her scenic design was selected to be part of the USA exhibition at the 2019 Prague Quadrennial. Some of her favorite credits include: RED VELVET (Shakespeare Theater Company, DC); MLIMA'S TALE (Repertory Theatre of St. Louis); Dael Orlandersmith's NEW AGE (Milwaukee Rep); SKINFOLK (the Bushwick Starr & National Black Theatre); UGLY & THE KILL ONE RACE & WEDNESDAY & BLUE (the feath3r theory); MRS. MURRAY'S MENAGERIE (ArsNova); Troy Anthony's THE REVIVAL: IT IS OUR DUTY (The Shed, NYC); WALDEN (TheaterWorks Hartford); LESSONS IN SURVIVAL: 1971 (Vineyard Theater, NYC). She is an assistant professor at Muhlenberg College. Member of USA829. www.youshinchin.com

ENVER CHAKARTASH (*Costume Designer*) Broadway: IS THIS A ROOM. Off-Broadway: CATCH AS CATCH CAN (Playwrights Horizons); ENGLISH (Atlantic Theater Company); BODIES THEY RITUAL (Clubbed Thumb); POWER (BAM); WHICH WAY TO THE STAGE (MCC); WOLF PLAY (Soho Rep.); CITIZEN (BAM); STRAIGHT WHITE MEN (The Public). Regional: VIETGONE (Guthrie Theater); ROMEO & JULIET (Hudson Valley Shakespeare Festival); STRAIGHT WHITE MEN (Steppenwolf Theatre Company). With Tina Satter/Half Straddle: GHOST RINGS; ANCIENT LIVES; HOUSE OF DANCE; SEAGULL (THINKING OF YOU). With The Wooster Group: A PINK CHAIR; THE TOWN HALL AFFAIR; THE B-SIDE; EARLY SHAKER SPIRITUALS; EARLY PLAYS. With Elevator Repair Service: ULYSSES.

BARBARA SAMUELS (*Lighting Design*) New York theater includes designs at LCT, Soho Rep, Ars Nova, NYTW, Playwrights Horizons, WP Theater, The Bushwick Starr, Beth Morrison Projects, New Georges, and Clubbed Thumb. Regional: Pig Iron, Bard SummerScape, The Alley, Long Wharf, A.C.T., Woolly Mammoth, Playmakers, Kansas City Rep, Cincinnati Playhouse, Shakespeare Theater Company, Trinity Rep, and Chautauqua. Education: BA, Fordham; MFA, NYU. Member USA829. New Georges Affiliated Artist. WP Producers Lab 2024. www.barbarasamuels.com

KATE MARVIN (*Sound Design*) Kate Marvin is a New York based sound designer, composer, and musician. Recent designs: THE BEST WE COULD (MTC), WOLF PLAY (Soho Rep), THREE SISTERS (Two River Theater), FIDELIO (Heartbeat Opera), HEARTLAND (59E59), A WRINKLE IN TIME (Playmakers Rep), THE MEMORY TRADE (Handmade Puppet Dreams), BLOOD MEAL, THE LITTLE HOURS (Theater in Quarantine), CHIMPANZEE (HERE Arts Center, World Puppet Theater Festival, Barbican Center). Kate is an associate artist with Target Margin Theater. Member USA829. www.katemarvinsound.com.

WHO'S WHO

AMANDA VILLALOBOS (*Puppetry Design*) creates puppets and specialty props for both stage and television and has performed on and off-Broadway as an actor and puppeteer. She is a MacDowell Colony fellow and her work has been nominated for two Drama Desk Awards and awarded grants & residencies from The Henson Foundation and the Brooklyn Arts Exchange. Broadway: IS THIS A ROOM (Lyceum Theater), AMÉLIE (Walter Kerr). Off-Broadway: SPACE DOGS (MCC), WOLF PLAY (Soho Rep), IN THE GREEN (LCT3), FONDLY, COLLETTE RICHLAND (NYTW), GHOST RINGS (NYLA), MEASURE FOR MEASURE (Public Theater), EVERYONE'S FINE WITH VIRGINIA WOOLF (Abrons), HAND TO GOD (Berkeley Rep). TV: "LATE NIGHT WITH SETH MEYERS." Installation: 12 Shouts to the 10 Forgotten Heavens Series (Whitney Museum) Performance credits include: HBO's THE PEE-WEE HERMAN SHOW on Broadway, Basil Twist's RITE OF SPRING and Sibyl Kempson's LET US NOW PRAISE SUSAN SONTAG. www.avpuppets.com

PATRICIA MARJORIE (*Prop Designer*) is a Brazilian Multidisciplinary theatre artist based in New York with focus on set design, props and directing. Recent works: costume designer for SIMON AND HIS SHOES directed by Meghan Finn; costume designer for THE TIME MACHINE directed by Joshua Gelb (playwrights horizons theatre school) set design for RE MEMORI by Nambi E. Kelley (WP theater); props for HOUND DOG directed by Machel Ross for Ars Nova; MONTAG directed by Dustin Wills by Soho Rep.; ULYSSES and THE SEAGULL by Elevator Repair Service; EVA LUNA by Repertório Espanhol; NOTES ON KILLING SEVEN OVERSIGHT by Mara Velez Melendez (Soho Rep.) 7 MINUTES (Waterwell, dir. Mei Ann Teo); WOLF PLAY (Soho Rep), BLACK EXHIBITION by Jeremy O. Harris dir by Machel Ross, SKINFOLK by Jillian Walker, IN THE SOUTHERN BREEZE (Rattlestick). Patricia has also recently performed on MRS. LOMAN directed by Meghan Finn (the Tank) and directed WHAT WILL BECOME OF KAARON? (The Tank) and her own work as a playwright A SONG TO KEEP THE WOLVES AWAKE (The Tank).

HANNAH "ROCK" ROCCISANO (*Fight Director*) is a fight director, intimacy director, director, educator and Shakespeare nerd. Recent fight direction credits include: A BRIGHT NEW BOISE (Signature Theatre), MONTAG (Soho Rep); WOLF PLAY (Soho Rep); STORMÉ (True Colors Project); A MIDSUMMER NIGHT'S DREAM (Columbia University). She has taught at PACE University, NYU Tisch, The Knickerbocker Studio, and The Atlantic Acting Studio. Hannah is the founder of Expand, Educate, Empower, an initiative bringing free stage combat training to students in underserved communities across the U.S (www.safd.org/train/development). Training: Certified Teacher and Chair of Development, Society of American Fight Directors; MFA Directing and MLitt in Shakespeare, Mary Baldwin University. hannahroccisano@gmail.com

WHO'S WHO

KASSON MARROQUIN (*Production Stage Manager*) Off-Broadway: THE LIGHT, ALICE BY HEART, CHARM (MCC); MONTAG (Soho Rep.); HAMLET, ORESTEIA (The Park Avenue Armory); OUT OF TIME (NAATCO and The Public Theater); THE THIN PLACE (Playwrights Horizons). Regional: QUIXOTE NUEVO (Hartford Stage); KILL LOCAL (La Jolla Playhouse); THE TEMPEST (The Old Globe and The LA Philharmonic); THE TALE OF DESPEREAUX, SHAKESPEARE IN AMERICA (The Old Globe). Dance/Touring: THE BIG FIVE-OH!, COME TO YOUR SENSES, SHADOWLAND, SHADOWLAND THE NEW ADVENTURE, PILOBOLUS AT THE JOYCE THEATER (Pilobolus); ON THEIR BODIES, FOOTPRINTS (The American Dance Festival). Music/Opera: PATH OF MIRACLES, TREE OF CODES (Spoleto Festival USA). Events: MCC Theater's MISCAST 2022 and 2019, Primary Stages Gala 2021 and 2022, San Diego Comic-Con's The Good Place Activation, Symphony at the Salk with Leslie Odom Jr., Yo-Yo Ma's Day of Action in CO and OH, Queer Liberation March Rally 2019, and many readings, workshops, and corporate events. Education: BA, University of North Texas & MFA, UC San Diego.

MALIE FUJII (*Assistant Stage Manager, she/her*) is a Yonsei Japanese American stage manager who prioritizes projects that center Global Majority artists, communities, and abundance. She pronounces her name "muh-LEE-ay foo-JEE-ee" and resides on the lands of the Coast Salish and Lenape peoples. Off-Broadway: PEERLESS (Primary Stages). Regional: AND SO THAT HAPPENED..., BEAUTY AND THE BEAST (The 5th Avenue Theatre); THE WINTER'S TALE, TWELFTH NIGHT, AS YOU LIKE IT, SHOUT SISTER SHOUT! (Seattle Rep). Malie graduated from the University of Washington with degrees in Drama and Capitalism (A.K.A. Business Administration, an education she is still working to unlearn). Outside of theater, she enjoys choreographing gymnastics routines, playing crash cymbals as loudly as possible, and befriending other peoples' dogs.

SOHO REP provides radical theater makers with productions of the highest caliber and tailor-made development at key junctures in their artistic practice. The organization elevates artists as thought leaders and citizens who change the field and society. Artistic autonomy is paramount at Soho Rep; the organization encourages an unmediated connection between artists and audiences to create a springboard for transformation and rich civic life beyond the walls of its theater. Critics continue to herald Soho Rep as a go-to theater destination for new work. *New York Magazine* says, "this indispensable theater offers more excitement per chair than any space in town," and *The New York Times* says, "The downtown powerhouse... regularly outclasses the work done on many of the city's larger stages."

WHO'S WHO

Soho Rep was named the “Best Theater in NYC” award by *Time Out New York* in their 2021 Best of the City Awards. *Time Out New York* wrote, “Soho Rep isn’t the last word in downtown experimental theater: Better than that, it’s often one of the first words, championing major voices at key points in their careers. Its astounding list of alums includes Richard Maxwell, Young Jean Lee, Adam Bock, Annie Baker, Nature Theater of Oklahoma, David Adjmi, Lucas Hnath, Branden Jacobs-Jenkins, Anne Washburn, Aleshea Harris and Jackie Sibblies Drury (whose FAIRVIEW, which premiered there, won the 2019 Pulitzer Prize). And Soho Rep’s low ticket prices, including 99¢ Sundays, help keep some of the city’s bravest, boldest and wildest theater within the reach of all New Yorkers.”

MA-YI THEATER COMPANY is the acclaimed Off-Broadway not-for-profit organization whose primary mission is to develop and produce new and innovative plays by Asian American writers. Its numerous acclaimed productions include Mike Lew’s TEENAGE DICK and BIKE AMERICA; Qui Nguyen’s THE INEXPLICABLE REDEMPTION OF AGENT G and SOUL SAMURAI (with Vampire Cowboys); Hansol Jung’s AMONG THE DEAD; Michi Barall’s RESCUE ME; Lloyd Suh’s THE CHINESE LADY; and Lonnie Carter’s THE ROMANCE OF MAGNO Rubio. Through programs like the Writers Lab, Ma-Yi emboldens a new generation of Asian American artists to voice their experiences, while developing a steady stream of quality new works by Asian American playwrights for Ma-Yi’s own performing repertory. New works developed at the Writers Lab have gone on to successful productions around the country, at such theaters as Victory Gardens, Denver Center, South Coast Repertory, Laguna Playhouse, Long Wharf Theater, Woolly Mammoth and the Actors Theatre of Louisville, to name a few. Ma-Yi’s productions have earned 10 Obie Awards, 5 Henry Hewes Award nominations, an Outer Critics Circle, Lucille Lortel, and Drama Desk nomination for Best Play and the Special Drama Desk Award for “more than two decades of excellence and for nurturing Asian-American voices in stylistically varied and engaging theater.” Ma-Yi Theater is under the leadership of Producing Artistic Director Ralph B. Peña.

STEPHANIE YANKWITT, CSA & TBD CASTING CO.

(*Original Casting*) With Soho Rep: Resident Casting Director at Soho Rep. Upcoming theater includes LUNCH BUNCH(PlayCo), PUBLIC OBSCENITIES (Soho Rep/NAATCO), HANG TIME (The Flea Theater), SMART (EST), A NICE INDIAN BOY (Olney) and HERE THERE ARE BLUEBERRIES (STC). Ongoing work with Tectonic Theater Project, NAATCO, La Jolla Playhouse, TheaterWorks Hartford, Primary Stages, The Sol Project, and Long Wharf Theatre. Ongoing film work with Lexicon Films, Culture House, and O Positive.

WHO'S WHO

THE TELSEY OFFICE (*Additional Casting*) With offices in both New York and Los Angeles, The Telsey Office casts for theater, film, television, and commercials. The Telsey Office is dedicated to creating safe, equitable, and anti-racist spaces through collaboration, artistry, heart, accountability, and advocacy.

ACTORS' EQUITY ASSOCIATION ("Equity"), founded in 1913, is the U.S. labor union that represents more than 51,000 professional Actors and Stage Managers. Equity fosters the art of live theatre as an essential component of society and advances the careers of its members by negotiating wages, improving working conditions and providing a wide range of benefits, including health and pension plans. Actors' Equity is a member of the AFL-CIO and is affiliated with FIA, an international organization of performing arts unions. Equity is governed by its own members through an elected Council, representing principal actors, chorus actors and stage managers living in three regions: Eastern, Central and Western. Members at large participate in Equity's governance through a system of regional Boards and Committees. Equity has 28 designated area liaison cities with over 100 members each.
#EquityWorks



The actors and stage manager employed in this production are members of Actor's Equity Association, the union of professional actors and stage managers in the United States.



The Director is a member of the STAGE DIRECTORS AND CHOREOGRAPHERS SOCIETY, a national theatrical labor union.



UNITED SCENIC ARTISTS



Council on the Arts

STAFF FOR WOLF PLAY

Company Manager	Brendan McNamara
Production Manager.....	Steve Rosenberg
Production Stage Manager	Kasson Marroquin
Assistant Stage Manager	Malie Fujii
Production Assistant	Dani Berman
Associate Director	Susanna Jaramillo
Associate Scenic Designer.....	Ant Ma
Associate Costume Designer	John Polles
Associate Lighting Designer.....	Ebony Burton
Associate Sound Designer	Elliot Yokum
Playwright Assistant.....	Sarah E. Bedwell
Covid Safety Officer	Phillip Carroll
Technical Director / Deck Carpenter	Peter Strand
Carpenters.....	Tait Alcivar, Sean George, Tuquan Smith Ian Stark, Peter Strand, Robert Zevac
Props Artisans.....	Ned Gaynor, Juliana Suaide, Ana Jablinski, Bella Anidjar, Patrice Escandon, Megan Meschino, Fatma Oukili, Emma Richmond
Fiber Arts Designer.....	Lisa Laratta
Costume Shop Manager	Caitlin Dixon
Wardrobe Supervisor.....	Devon James
Production Audio.....	Max Baines
Sound Board Operator.....	AJ Glover
Sound Crew.....	Max Baines, AJ Glover Greg Meyers, Jeffrey Salerno
Production Electrician	John Tees III
Lighting Programmer	Aaron Gubler
Light Board Operator	Samuel Ean Grady
Lighting Crew	Jamie Crockett, Katherine Dumais, Ariana Finamore, Amy Harper, Ashley Kok, Amanda Langhaus, Lazarus Nazario, Vincent Procker, Diane Tees, Alena Thomas, Danielle Verkennes
Key Art Design	The Numad Group / Ted Stephens III, Brendan Whipple
Scenery.....	Stone Dog Studios Scenery
Lighting Rentals.....	4Wall Entertainment
Sound Rentals	Five OHM Productions

ORIGINAL CASTING

Stephanie Yankwitt, CSA &
TBD Casting Co.

ADDITIONAL CASTING

The Telsey Office
Karyn Casl, CSA

SPECIAL THANKS

Ensemble Studio Theatre
The Juilliard School, Kate Dale
Materials for the Arts
Remix Market
The Tank

MCC THEATER STAFF

Artistic Directors.....	Bernie Telsey, Will Cantler
Executive Director	Blake West
General Manager	Beth Dembrow
Assistant General Manager/Company Manager.....	Brendan McNamara
Director of Finance	Liz Olson
Finance & Business Manager.....	Laura Knutzen
Finance Assistant	Hayley Isaacson
Manager of Artistic Production	Ayana Parker Morrison
Manager of Artistic Development.....	Elissa Huang
Manager of Musical Programming & Development	Scott Galina
Director of Production & Facilities.....	Steve Rosenberg
Facilities Manager.....	Steve Hail
Costume Shop Manager	Caitlin Dixon
Production & Facilities Assistant.....	Hannah Hernandez
Building Consultant.....	Jason Walters
Director of Development.....	Anne Myers
Development Consultant.....	Sandra Davis
Senior Manager of Special Events.....	Vinny Martini
Manager of Individual Giving	Megan Foehr
Manager of Institutional Giving.....	Carrie O’Dell
Special Events & Individual Giving Associate	Kayla Campise
Assistant Manager of Development Operations.....	Rebecca DeMarco
Fundraising Consultant.....	Kel Haney
Telefund Callers	Sam Hood Adrain, Giuliana Carr, Kristina Dizon, Alessandra Migliaccio, Keith Weiss
Director of Marketing & Audience Services	Abigail Langsted
Marketing Consultant.....	Nikki Vera
Audience Services Manager	Josué Hernández
Marketing Assistant.....	Noah Eisenberg
Graphic Design & Videography.....	The Numad Group / Ted Stephens III, Brendan Whipple, Tony Cotte
Press Representatives.....	Matt Ross PR/Matt Ross, Nicole Capatasto, Liz Lombardi, Grace Walker
House Managers.....	Erik De Jesus, Alejandra Ramos
Assistant House Managers	Rachel Behrman, Destiny Rivera, Edgard Toro
Ushers.....	Natalie Almanzar, Emma Desvignes, Al-Akhir Fletcher, Luis Martinez, Seymour Shaw, Angel Tavaréz
Box Office Staff.....	Danielle Covington, Anissa Griego, Judith Jimenez
Public Engagement & Education Consultant	Tricia Patrick
Manager of Education Programs	Dee Hughes
Education & Public Engagement Assistant	Dominic Martello
Interim Education Programs Coordinator	Kevin Carillo
Brooklyn Youth Company Director	Vickie Tanner
Youth Company Performance Lab Director.....	Jen Shirley
Youth Company Playwriting Lab Director.....	Juan Ramirez, Jr.
Youth Company Performance Lab Associate Director	Kevin Carillo
Youth Company Playwriting Lab Assistant Director.....	Alexander Lambie
Senior Teaching Artists.....	Matt Higgins, Raphael Peacock
Teaching Artists	Marissa Stewart, Vickie Tanner
Youth Company Alumni Fellows.....	Kaisheem Fowler-Bryant, Destiny Rivera
Security Team	Allied Universal Security Services
Janitorial Staff	Impressive Cleaning Services Inc.
Concessions.....	Sweet Hospitality Group



**SOHO
REP.**

Soho Rep provides radical theater makers with productions of the highest caliber and tailor-made development at key junctures in their artistic practice.

Just a few of the plays that have received their World or New York premiere at Soho Rep's 65-seat downtown venue and have gone onto future productions include: Aleshea Harris's *Is God Is*, Branden Jacobs-Jenkins' *An Octoroon*, Anne Washburn's *10 out of 12* and Jackie Sibblies Drury's *Fairview* which was also recognized with the Pulitzer Prize in Drama and moved to Berkeley Repertory Theater and Theater for a New Audience before receiving new productions across the globe including at London's Young Vic.

*Above: Esco Jouléy in WOLF PLAY at Soho Rep in 2022.
Photo by Julieta Cervantes.*

In March 2020, tech rehearsals were underway for the New York premiere of WOLF PLAY at Soho Rep when we had to close down the production at the onset of the COVID-19 pandemic. After a two-year hibernation, Wolf Play returned to Soho Rep in February 2022 and enjoyed a spectacular seven-week extended sold-out run. *TheaterMania* named WOLF PLAY one of “The 10 Best Off-Broadway Shows of 2022” saying that the “emotional rollercoaster of a play” featured “one of most heartbreaking performances of the year,” and *The New York Times* called it, “thrilling, probing and playful.”

Soho Rep also commissions and develops new work in our Studio program, and we support early career artists in the Writer/ Director Lab. In 2020, we launched Project Number One as a job-creation program in response to the extreme precarity faced by freelance artists during the COVID-19 pandemic. Now, Project Number One is evolving to include ongoing staff positions for artists, significant increases to production fees and salaries, and budget transparency.

This season, all three of Soho Rep’s productions are world premiere commissions: MONTAG by Kate Tarker and directed by Dustin Wills, PUBLIC OBSCENITIES written and directed by Shayok Misha Chowdhury, and THE WHITNEY ALBUM written by Jillian Walker and directed by Jenny Koons. Please visit sohorep.org to purchase tickets to our upcoming productions and to learn more about the company’s nearly 50-year history as a vital civic institution.

Soho Rep’s Board of Directors: Jodi Balsam, Sarah Benson, Paige Blansfield, Jon Dembrow (Chair Emeritus), Jackie Sibblies Drury, Susan Dunn (Secretary), Kenneth Ebie, Cynthia Flowers, Roxane Gay, James Gleick, Frank Holozubiec, Branden Jacobs-Jenkins, Aretha Marshall, Victoria Meakin (Chair), Zach Miller, Anne O’Grady, Meropi Peponides, Sidney Madison Prescott, Claudia Rankine, Daniel C. Smith (Treasurer), Amber Tamblyn, Carmelita Tropicana

Leadership support for Soho Rep’s 2022/23 season is provided, in part by, Booth Ferris Foundation, Susan & Thomas Dunn, Ford Foundation, Howard Gilman Foundation, James Gleick & Cynthia Crossen, Horace W. Goldsmith Foundation, Alfred F. Hubay, The Jerome Foundation, Victoria Meakin, Mellon Foundation, Mellon Foundation New York Theater Program in partnership with the Alliance of Resident Theatres/New York, National Endowment for the Arts, New York City Department of Cultural Affairs in Partnership with the City Council, New York State Council on the Arts and the New York State Legislature, Shubert Foundation, The Dorothy Strelsin Foundation, Venturous Theater Fund of the Tides Foundation, and anonymous.

MCC BOARD OF DIRECTORS

Barbara Doran, *Chair*
David Lloyd, *Vice Chair*
Erik Piecuch, *Treasurer*
Kareem Crayton, *Secretary*

Marjorie Altschuler
Will Cantler
Suman Chakraborty
Robert J. DiDiano
Nicole Eisenberg
Melvin Epstein
Susan Frankel
Cathy Glaser
Jessica Greenwood
Peter Hedges
Claudia Newman Hirsch
Devashish Jain

Judith Light
Bob LuPone†
Julianna Margulies
Marianne Mills
Neil S. Mitchell
Susan Raanan
Thomas Sadoski
Jodi Schneider
Marilyn Sobel
Bernie Telsey
Lois Weinroth
Blake West

MCC COUNCIL

Iliana Guibert
Jordan Hyatt & Peter Dolchin
Marina Marcoux

Kristine Louis Reynal
Jill Surdyka-Kim

CORPORATE CONTRIBUTORS

Thank you to the generous corporate sponsors that support our work through the annual MISCAST Gala, production support, and corporate matching programs.

Bank of America	Google	United Talent Agency
Bank of America Matching Gifts	Hakluyt & Company	Viking Entertainment
Baseline Theatrical	Jujamcyn Theaters	The Walt Disney Company
Bespoke Theatricals	Morgan Stanley	WarnerMedia
CBS	Movado Group Inc.	Wells Fargo Advisors, LLC
City National Bank	Network for Good	Wells Fargo Private Bank
Davis Wright Tremaine LLP	Paramount +	
	Scott Free Productions	

Benefits of sponsorship include premium seats at the gala and performances, prominent recognition, and opportunity to create unique employee or client entertaining events. For more information, please contact Anne Myers at (212) 727-7722 ext. 236 or amyers@mcctheater.org

FOUNDATION AND GOVERNMENT SUPPORT

Howard Gilman Foundation	The Emily Davie and Joseph S. Kornfeld Foundation	Burton A. and Sandra D. Zipser Foundation
The Shubert Foundation	Pinkerton Foundation	National Endowment for the Arts
New York City Department of Cultural Affairs in partnership with the City Council	The Harold & Mimi Steinberg Charitable Fund	The Charles & Lucille King Family Foundation Inc.
New York State Tourism Return to Work Grant Program administered by Empire State Development	Tiger Baron Foundation, Inc.	The Fan Fox & Leslie R. Samuels Foundation Inc.
Laurents/Hatcher Foundation	New York State Council on the Arts	Axe-Houghton Foundation
	John & Robyn Horn Foundation	Lucille Lortel Foundation
	Richenthal Foundation	NYSCA/TDF TAP Plus
	The Blanche & Irving Laurie Foundation	The John Golden Fund
		The Lambs Foundation
		Actors' Equity Foundation

OUR MISSION

Our mission is to provoke conversations that have never happened and otherwise never would.

MCC THEATER was founded in 1986 as MANHATTAN CLASS COMPANY by a collective of young actors, writers, and directors determined to steer their own artistic development—and shake things up! That initial group included Artistic Directors **Bernie Telsey**, **Bob LuPone** and **Will Cantler**, since joined by Executive Director **Blake West**. Our increasingly expansive work continues today.

- **WE PRODUCE EXCITING THEATER.** We produce seasons of BOLD new plays and musicals by exceptional ARTISTS.
- **WE DEVELOP NEW WORK.** We develop NEW WORK by emerging and established artists through a rigorous process that encourages CREATIVE RISK-TAKING.
- **WE HONOR YOUNG VOICES.** Each year our education programs use the power of theater to ROUSE the imaginations of over 1200 high school STUDENTS across ALL FIVE BOROUGHES.
- **WE GET PEOPLE TALKING.** COLLABORATION and COMMUNITY are at the core of everything we do.



the CAST of SCHOOL GIRLS; OR THE AFRICAN MEAN GIRLS PLAY /
photo by JOAN MARCUS

EDUCATION PROGRAMS

MCC has continued to adapt and innovate to meet the ever-changing needs of our students and community, particularly over these last three years. After seamlessly transitioning to fully remote programming in March 2020, then hybrid after-school and in-school programs last year we were thrilled to be back in-person for performances of UNCENSORED, BKYC UNCENSORED and FRESHPLAY in Spring 2022.

We continue the long and valued relationships with our four partner schools: Manhattan International High School, Baruch College Campus High School, The George Washington High School Educational Campus in Manhattan, and The High School for Public Service in Brooklyn. We are committed to providing quality arts-based education because youth voices matter and creating an inclusive space where everyone's stories are heard can inspire change in ourselves and in society.

MCC THEATER's Education Programs are supported by the Axe-Houghton Foundation, The Emily Davie and Joseph S. Kornfeld Foundation, Harold J. Newman† & Ruth Newman, The Pinkerton Foundation, The Eric Rosedale Playwriting Fund, Tiger Baron Foundation, New York State Council on the Arts, and public funds from the New York City Department of Cultural Affairs in partnership with the city council.



PUBLIC ENGAGEMENT



Our **PUBLIC ENGAGEMENT** programs invite audiences to delve deeper into our onstage work as well as build bridges across our community artistically and geographically. Connect with us and each other.

Audience members of all generations have emboldened our work with VIBRANT DISCUSSIONS, debates, and reflections that spill out of the theater and fill the streets and continue to reverberate throughout New York City and beyond.

LET’S TALK: We invite you to join our Audience Conversations taking place directly after select performances. We also host moderated TalkBacks with our cast and creative teams.

LET’S ENGAGE: Community Specific theater nights, panel discussions, and workshops open up the door to wider engagement with our work and our company.

LET’S WATCH: Open mic nights and invitations to student staged readings as well as film screenings bring audiences together in a new way to celebrate artists and artistry in a variety of formats.

Thank you to our Public Engagement partners whose collaboration makes our work possible: [African Film Festival New York](#), [Broadway Podcast Network](#), [Developing Artists](#), [The Mental Health Coalition](#), [MOBI—Mobilizing Our Brothers Initiative](#), [Muddy Paws Rescue](#), [NYCAAC—Animal Care Centers of NYC](#), [National Queer Theater](#), [Walk Tall Girl Productions](#), and [W42ST Magazine](#).

THE ROBERT W. WILSON MCC THEATER SPACE

Inaugurated on JAN 9, 2019, MCC's new Hell's Kitchen home, **THE ROBERT W. WILSON MCC THEATER SPACE**, is a state-of-the-art complex designed for us to do what we do best: shake things up. The space houses two theaters, two rehearsal studios, extensive backstage facilities, administrative offices, and ample audience amenities.

THE NEWMAN MILLS THEATER is named for Ruth & Harold[†] Newman and Marianne & Steve Mills. As dedicated co-chairs of The Campaign for MCC THEATER, they led a successful fundraising effort in support of MCC's education and artistic programs.

THE SUSAN & RONALD FRANKEL THEATER is named for Susan & Ronald Frankel. They have been active with the company since 2015. Susan Frankel is also an MCC THEATER Board member.

ROBERT W. WILSON was a well-known and successful investor from the mid-1960's to the mid-1980's. After retirement, he devoted his life to philanthropy. He was a transformative philanthropist, primarily funding worldwide organizations in the preservation and conservation areas. An avid New Yorker, he was also involved with a number of New York's cultural institutions. He was a major supporter of, and held leadership roles with, the Brooklyn Botanic Garden, Environmental Defense Fund, The Metropolitan Opera, the Whitney Museum, and the World Monuments Fund. In addition, he and the Trust continue to support the above institutions and The Nature Conservancy, The New York Public Library, Central Park Conservancy, BAM, and the Wildlife Conservation Society.



LAND ACKNOWLEDGMENT

MCC THEATER wants to center our event in practices rooted in fostering community. We acknowledge how the PAST and the FUTURE converge on our PRESENT. MCC'S theater home sits on the UNCEDED land of the LENAPE people. We acknowledge that this stolen land was worked on by enslaved Africans. May this living land acknowledgement—to the LENAPE, their elders past and present, and their future generations, as well as to the experience of enslaved Africans and their descendants, serve as a starting ground for change.

PATRON PROGRAM

Every Patron is treated to....

- **PERSONALIZED TICKET SERVICE**—we reserve the best seats for you.
- **EARLY ACCESS** to information about casting, special events, and future programming.
- **YOUR PERSONAL INVITATION TO POST-SHOW PATRON EVENTS** to meet the cast, talk to the artistic leadership, and be a part of the conversation with other Patrons.
- **THE CHANCE TO ATTEND PRIVATE READINGS** and other exclusive special events.
- **A TAX DEDUCTION** for supporting our work.

MCC is a nonprofit, and we count on our Patron community to support the work behind the work. Your tax-deductible contribution helps us...

- **PRODUCE** vital new plays and musicals.
- **DEVELOP** new work by the next generation of theater artists.
- **CHANGE** the lives of nearly 1,200 NYC public high school students each year.



Learn more at patrons@mcctheater.org,
(212) 727-7722 ext. 233

WE SAVED YOU A SEAT

Commemorate
your support of
MCC THEATER
with a seat in the
Newman Mills Theater.

Standard seats begin at \$1,500 per seat.
For more information about seat naming,
please contact Rebecca DeMarco at
rdemarco@mcctheater.org or (212) 727-7722 ext. 212.

PRODUCER’S CIRCLE

We are so grateful to our Producer’s Circle, Ballad, and Entr’acte Patron members who provide major support of our mission to provoke conversation among artists, audiences and students – at every point in the play-making process, in all of our programs. Our Producer’s Circle, Ballad, and Entr’acte Patrons play a key role in developing new work for the stage and MCC’s work with young artists and students.

Anonymous	Rachel & Melvin Epstein	Erik Piecuch &
Brooke Adams &	Susan & Ronald Frankel	Alex Bong Wright
Tony Shalhoub	Alice & Bruce Geismar	Susan Raanan &
Marjorie &	Cathy Glaser &	Robert Fleischer
Fredric Altschuler	Steve Semlitz	Jodi & Marc Schneider
The Bartos Family	Jessica & John Greenwood	Marilyn Sobel & Ben Cohen
Linda & Mel Brosterman	Claudia & David Hirsch	David Sumner
Suman Chakraborty &	Devashish Jain &	Pam & Larry Tarica
Joseph Shrope	Marc-Antoine Denechaud	Aimee Telsey &
Kareem Crayton	Gina Maria Leonetti	Richard Friesner
Carol G. Deane	Judith Light	Suzanne Telsey &
Robert J. DiDiano	David L. Lloyd &	Steven Bennett
Barbara Doran	Meg Mortimer	Lois Weinroth
Nicole &	Marianne & Steven Mills	
Stephen Eisenberg	Shelly & Neil S. Mitchell	

List as of 1/20/23

To learn more about the Producer’s Circle, please contact Megan Foehr at 212-727-7722 ex. 233 or mfoehr@mcctheater.org.

MCC PATRONS

We are so grateful to the members of our Patron Program, who provide vital annual support for our programming on and off stage, our education and public engagement initiatives, and so much more. For more information on the Patron Program, please visit mcctheater.org/support or contact patrons@mcctheater.org or (212) 727-7722 ex 233.

Anonymous (2)	Roselle Baldwin	Rosemary Newman
Cynthia & Taylor Adams	Productions	Matt Pearson -
Irwin S. Scherzer	Lori & David Sherman	Marron Foods
Foundation	Tammie Weinfurtner	Jerilyn & Brian Perman
Judith & Douglas Krupp		Brette Popper &
Dr. Robert Press	Anonymous (3)	Paul Spraos
Amy & Stephen Sills	Liz Armstrong	Martha J. Radford
	Liana Baker	Neal Rubinstein
Jennifer Chambers	Jodi & Craig Balsam	Steven Schreiber &
Elizabeth Columbo	Brenda & David Bass	Amy Lorowitz
Jennifer Diamond	Monty Blanchard &	Roger Schwed &
William W. Donnell	Leslie Tcheyan	Laura Dukess
Amy & Frank Garrison	Erin Collins	Niki & Tony
Iliana Guibert	Darnell-Moser	Jayne Baron Sherman &
Haley Huxley	Charitable Fund	Deby Zum through The
Jordan Hyatt & Peter	Jim & Sue Given	Sherzum Fund at Our
Dolchin	Rachel Hutchinson	Fund
Sharon Kirschner	Leslie Lewit-Milner &	Lacey & Cheryl Tucker
Bruce MacAffer	Dr. Lawrence Milner	Robin & Leigh Walters
Reeva & Ezra Mager	Marina & Bill Marcoux	Joan Weingarten &
Peter McKown	Deborah & Ivan Moskowitz	Bob Donnalley Gift Fund
Sherry Steiner Schwartz	Abigail Murray &	Cathy & Stephen Weinroth
Rabbi Barton & Jane Shallat	Brad Seiler	Amy L. Weltman

Patricia & Mark Willis
Mary Beth & Alan Wilmit

Anonymous (11)
Robert Aberlin
Susan & Ira Akselrad
Brooke Adams &
Tony Shalhoub
Rebecca Anderson
Peter Anderson
Steven Aripotch &
Bruce Jones
Kendrick Basso
Mark Beatt
Janet Benton
Fran Berrick
Judith Ferrenbach
Bradshaw
Einat & Ram Burshtine
Linda & Arthur Carter
Casellula Cheese & Wine
Barbara Chubb
Mary Cirillo-Goldberg
Dorie Clark
Andrea Collins
Frank Conway
Almitra Corey
Debi Damesek &
Jonathan Forstadt
Ann E. Darby &
William C. Dudley
Costa & Katherine Darras
Cathy Dault
Mary Davis &
MBL Productions
Bunny Dell
Michael Dellangelo
John Demsey
Paul & Jenny Diamond
Joseph Dimino &
Michael Guida
Susan & Todd Eckland
Susan Edelstein
Rebecca &
Martin Eisenberg
Karen Elizaga
Kittie Fahey
Anna May Feige
Sheri Feigen
Valerie Feigen &
Steven Eisman
Erika Feil-Lincoln &
Matthew Lincoln
Nancy Feldman
Linda & Mark Florin
Michael Fowlin
Susan & David Frankel
Peter Frey
Yvette A. Geary
Andrea Gellert
Karen Lipkind &
Stuart Gelwarg
Lynn George

Ghilman Ghuman &
Tamara Goldberg
Thompson Coburn Hahn &
Hessen
Amy & Abe Glass
Marianne Goodman MD
Carolyn Gould
Mark Greenwald
Lisa Hadar
Bradley Hames
Susan T. Harris
Ian Harris
Rachel Hobart &
Edward Toole
L. Keith Hughes
Natasha Ippolito
Jeffrey Jackman
Tina Johnson-Marcel
Robin A. Jones
Georgann Joseph &
David Marker
Isabel Kallman
Mara Fleur Kanner
Eric R. Kelhoffer, MD
Joanne Kennedy &
Rich Collins
We Two Kings
Robert Klein
The Klena Family
Heni Koenigsberg
Deborah Kopinski
Stephanie & Ron Kramer
Natarajan Krishnaswami
Elayne Landau
David & Devora Lans
Lynn & Kevin LaPierre
Leslie Larson & Don Katz
Patty Laxton
Jon LaPook & Kate Lear
Karen Leeds
Cathy Ross Lesse
Jan & Rachel Levine
Bob Lipton
David &
Deborah Livingstone
Lisa Lowe & David Lipsky
Bruce MacAffer
Jane & Bill Macan
Leonard Majzlin
Barbara Manocherian
Mitch Marois
Caroline Marshall
Nina Matis
Scott McDonald
Francie McKenzie
Patricia Meadow
Mark & Jennifer Measures
Israel Meir & Steve Rivera
Lisa Melmed Cohen
Kelly & Blake Miller
Matthew &
Myra Zuckerbraun
Virginia & Timothy Millhiser

Ann Miner
Rob Mish
Amelia Monteiro
Larry Moss
Sheila Nevins
Susan & David Noonan
Kathleen O'Grady
Eileen O'Hern Luby
Wanda Olson &
Rob Silverstein
Sarah O'Neill
Ellen Ozur & Stuart Brown
Sophia & Jim Papoulis
The Peterson Family
Christine M. Millen &
William M. Pinzler
Suzanne & Bruce Poli
Kim Powers
Mindi Reich-Shapiro
Fritz Reuter
Kristine Louis Reynal &
Max Reynal
In Memory of
Ronald O. Jacobson
David Rockwell
Claire Rose &
Michael Woloz
Sharyn Rosenblum
Allison & Jeff Rosier
Susanne Rostock
Becca Rothschild
Benjamin Ryan
Ellen Saidenberg
Bubba & Jennifer Samuels
Roy Sander
Charlotte Schafer
Murray & Brenda Schane
Miriam Schneider
Tysha Scott, In Memory of
Phillip R. Scott Esq.
Sarajane Sein
Randi Sellinger
Beth Senturia
Brooke Adams &
Tony Shalhoub
Mary J. Shannon
Warren Sherman
Barbara Shulman
Barb Shum
Richard &
Judith Silverman
Ken Staffey
Jane Stanicki
Wendy Stanley
Cheryl M. Sternberg
Henry & Jo Strouss
Jill Surdyka-Kim
Jenni Swan
Judith Sykes & Fred Seid
Dr. Moovesa aka Victor
Talbot MD
Marsh
Betty & Peter Tilley

Maria Torres	Rachel Weinstein &	Fred Wistow
Nathan K. Turoff	Jason Pizer	Billy Wong
David Umbach &	Amy L. Weltman	Ed Yauch
David Monroe	Sheila & Richard White	Roy Youman & Juliet Borja
Juli Vitiello	Tyler Whitman	Connie & Art Zuckerman
Cristina von Bargaen &	Ellie & Dan	
Jonathan McCardy	Mary Beth & Alan Wilmit	
Deborah Wallach	Richard Winkler	

List as of 1/20/23

MCC THEATER SUPPORTERS

Over the years, MCC THEATER has looked to our audience and friends to provide encouragement to fully support a nurturing environment for theater artists and students to explore compelling stories. We thank each and every one of you for your generosity.

Anonymous (4)	Susie & Harry Horgan	Buck Henry
Liz Armstrong	The Johnson Company	Debbie Higgins
Walter Bobbie	Susan Klebanoff	Barbara Janowitz &
Colbert Family Fund of	Heni Koenigsberg	Peter Entin
Coastal Community	KC Maurer	Maira Kalman
Foundation of SC	Ann Mellow	Robb Lady
Joanne D. Flanagan	Meredith Robbins &	Dr. Susan Laubach
Gerson Family Foundation	Eric Bornemann	John Lewin &
Robyn Goodman &	Rodenberg Family	Margie Becker-Lewin
Anna Louizos	Foundation	Frank & Amy Linde
Mark Gordon	Thomas & Jessica	David L. Lloyd &
Laurence Greenwald &	Rothman	Meg Mortimer
Karen Adler	Sidney Kohl Family	Alicia Longobardo
Dede Harris	Foundation	Robert & Jean Markley
Kevin Hogan & Aron Larson	Michael & Sue Steinberg	Julianna Margulies &
Elysabeth Kleinhans	Ted Stephens III	Keith Lieberthal
Heni Koenigsberg	Sydney & Jonathan Stern	Nina Matis
Jim McKenzie	Vicki Leeds Tananbaum &	Rob Mish
Fred Meyer	Harold Tananbaum	Deborah & Ivan Moskowitz
John Orberg		Ben Myers
Steven Silverstein &	Anonymous (1)	Devdutt V. & Asha D. Nayak
Cathy Raduns	Atlas Talent Agency	Gabrielle & Michael Palitz
Mark Stein	Maureen & Bill Barton	Jane Ross & Jon Schriber
Leo Shull Charitable Fund	Bruce & Laurie Berg	William Rubenstein
for the Arts	Stephanie L. Berger	Laura Schisgall
Francis H. Williams	Michael Berman	Barbara Schnitzler &
	Jeremy Black	Billy Finkelstein
Anonymous (2)	Brenda & Connolly Bottum	Sherry Steiner Schwartz
Stephen Breimer	Steven Byer	Stefani Shavel
Geneva Carr	Tom &	Eileen Sherman
Linda & Arthur Carter	Nancy Carey Cassidy	Jonathan Sherman
Nancy & Jim Cook	Elizabeth Columbo	Barb Shum
Darnell-Moser	Ellen &	Elizabeth Simons
Charitable Fund	Pierre de Saint Phalle	Dr. Alana Spiwak
Gensler Giving Fund	Lisa & Oliver Dow	Cathy & Stephen Weinroth
Gracie Annabelle and	Downtown Women	Billy Wong
Sam Fund	for Change	David Zayas &
Cathy Glaser &	Amy Elliott	Liza Colon-Zayas
Steve Semlitz	Valerie Feigen &	
Sandi Greenwald	Steven Eisman	Anonymous (17)
Russel Hamilton	Jonathan File	Dr. David & Mrs. Cassie
Barbara & Jonathan File	Jennifer Futch	Ackerman
Harvey Firestone Jr.	Marcia Goldberg &	Charlotte & David Ackert
Foundation	Paul Garrity	Randy Adams
Peter Hedges & Susan Bruce	Glenn Gundersen & Sue Manix	Vito Amedeo

Carmen Anthony	Vince & Denise DeGiaimo	John Halloran
Lucy & Irwyn Applebaum	Laura Delano & Bob Celli	The Hansen Family
Arora Family	Andrew Delaplaine	The Raja and Anna Harb
Valerie Ascitutto	Jeff DeMarco	Family Fund
Annaleigh & Joe Ashford	Jamie deRoy	Susan and Charles
Bryan Austermann	Robert J. DiDiano	Harris Fund
Sharon Axelrod	Marcelle Doll	Rusty Harrison
Jane Azia	Patrick Dominguez	Patricia Haverland
J A Ted Baer	Andrew Doran	Diane Hayden
Chris Bailey	Gina Doyle & Cherie Goon	Harriet & John Hazard
Ed Baklarz	Malcolm A. Duffy	Andrea Heitner
Carl Baldasso	David K. Drumgold	Adin Heller
Noel Baril	Amy Eshleman	Joshua Hill
Albert Bart	Karen Exkorn	Barry Hoffman &
Monette & Geoffrey Basson	Aina Fadina	Jane Weiss
Ann Benjamin	Jody Falco &	Jeffry Hoffman
Stephanie L. Berger	Jeffrey Steinman	Susan Hoffman
Rita Berman	Halley Feiffer	Ina Kahn Hollander
Robert Bezy	Tim Feige	Jerrietta Hollinger
George Blanck	Peter Filiaci	Susie & Harry Horgan
Susan Bloom	Eileen Fink	Jeanette Horn
Nicolette Blount	Jo Ellen Finkel	Mary Horner
Kristina Bramhall &	Leah & Michael Finkelstein	Michelle & Ed Howe
Brooke Reutter	Joe Finnegan	Family Hrousis
Marian Brancaccio	Stuart Fish	Melody Hunt
Leslie & Ted Breck	Jack Fisher	Sally & Robert Huxley
Patrick Breen	Ked Fisseha	Mac Ingram
Martin Brekeller	Maritza Fitzgerald	Mark Jacobs
Tom Broecker	Elin Flack	Pamela Jacobson
Eileen Bruck	Susan Fleisher	Melissa Jarmel
Marc Bruni	Kathleen Flood	Robin A. Jones
Mark Buchbinder	Georgianna Forbes	Robert Joy
Taylor Burkey	Anthony Ford-Hutchinson	Thomas Kail
Craig Burns	Jamie Foreman	Sherman Kahn
Jim Butler	Justin For	Elizabeth Kalodner
Lauren Callaway	Will French	Paula Kaminsky David
Claire Cardone	Nancy Friedman	Jill Kargman
Theresa Casaletta &	Terri Friedman	Michael & Marlene Karu
Joseph Borrelli	Steven Froot &	Linda Kasierer
Claire CasaSanta	Mary Ann Doyle	Amaha Kassa
Michael Casey	Margaret Fulton	Jordan Katz
Michael Charles	Bridgette Gallas	D'Anna & Elly Keinan
Lidia & Stanley	Stu & Adrian Gelbard	Erica & Jim Kellermann
Chepovetsky	Ellen Geller	David Kernahan
Adrian Chisholm	Nancy Nagel Gibbs	Ann B. Kerns
Tanen Clark	Peggy & Dave Gillespie	Cynthia Kitt
Kathryn Class	Peter Golden	Sharon Kirschner
Alan Cohen	Carol & Myron Goldman	Martha & Michael Klein
Lawrence D. Cohen &	Christopher Gonzalez	Carolyn Klimpl
Michael Gore	Marianne Goodman MD	Tracy Kohn
Adam & Elisa Coker	Gottlieb Family Foundation	Karen Korman
Debra Cole	Charles Gray in honor of	Robert Koska
Anna Cook	Bob LuPone	Patricia Kravtin
Steven Crossot	Virginia Gray	Barbara & Stuart Kreisberg
Karen Crowley	Jonathan Graziano	Peter Kuzma Jr.
Mengyingzi Dai	Jonathan Greenwood	Vaden Lackey
Deborah Daniell	Harrison	Kathryn Lagana
Carol Danoff	Ken Greiner	Judy Marie Lamana
Dexter A. David	Jack Grossbart	Diarra Lamar
Mary Davis &	Carlos Gutierrez-Solana	Sue Leibman – Barking
MBL Productions	Joanna Gutierrez	Dog Entertainment
Terry Davis Perl	Steve Gutman	Beth & Richard Levine
David Dean	Marc Haber	Shelley Levine
Maria De Castro	Alexa Hack	Allison Levy

Ellen Lewis
Kurt Liphardt
Susannah Lloyd-Jones
Matt Lopez
Cathia Louis-Jacques
Lisa Lowe & David Lipsky
Tiffany Lu-Heda
Eric Luftig
Susan Lupow
Amanda Lyon
Catherine Maciariello
Jeffrey Macklis
Annette Magjuka
William J. Mahan
John-John Manlutac
Jody Mansbach
Robert & Jean Markley
Phillis Marko
Amelia Marshall
Ebony Marshall-Oliver
Tim & Dair Mathistad
Katrina McCann
Tina McCourt
Sarah McGill
Grete Meilman
Norm Meyrowitz
Miami New Drama
Ann Miner
Natalie Mines
JerryScott Mitchell
Carl Moellenberg
Corinne Monson
Lori Moore
Yvette Mullings
Mark Newman
Joyce Nissim
Lynn Nottage
Howard Nusbaum
Clementina Ojie
Randi & Doug Olin
Robert Ollis
Clarence Olmstead &
Kathleen Heenan
Jessica Ortiz
Steve Ortiz
Tosan Oruwariye
Pauli Overdorff
William Atticus Parker
Lornette Patrick
Tasia Pavalis
Mabel Payne
Adeline Penn
Marla Persky
Steven Petlick
Catherine Petrello
Ellen Petrino
Marilyn Piecuch
Brett Pierce
Martin Platt
Bola Plenty

Barbara Pollard
Cheryl (Zoldowski) Powell
Kathleen &
James Pressler
Kenneth Quay
Jennifer &
David Rabinowitz
Joe Rappaport
Carma Reed
Mindi Reich-Shapiro
Donna Reid
Megan Reid
Fritz Reuter
Vicente Rodriguez
Donald W. Roeseke Jr.
Joseph Rokacz &
Larry Gordon
Jackie Rolliardi
Cathy Wilson Rosen &
Michael Rosen
Sharyn Rosenblum
Carole Rothman
Greta Rothman
John Rothman
Howard & Joan Rothman
Erica Rotstein
Emma Roudabush
Mr Josh Rubinger
Mona Safabakhsh
Linda Saffire
Evan Sagerman
Paula E. Sandoval
Trish Santini
Denise Saporito
Judy Schilling
Judi Schindler
Lynn Schlesinger
Darrel Schoeling & Jeff
Corbin
Susan Schwab
Alison & William
Schweizer
Michael Seltzer
Ainka Shackelford
Kylee Shafiuzzaman
Steven Shepard
Emily & Ken Shuldman
Gary & Karlan Sick
Daphne &
Andrew Silverstein
Jerry Silverstein
David Simon
Meg Simon
David B Simpson
Janice Simpson &
Kamau Adilifu
Robert Sinclair
Heavy Seas Beer
Norm Sloan
Judy Slovin

Tricia Small
Bruce M. Smith
Janie Smulyan
Geoffrey Soffer &
Joaquin Esteva
Richard Sporer
Thomas Sproat
Robert Starr
Lisa Steffens
Carlo Steinman
Kathryn Stokes
Jennifer Sucov
Pavur Sundaresan
James Suskin
Judith Sussman
Daniel Swee
Lyndsey Tait
Elizabeth Tavel
Kimberly Taylor
Albert Telsey
Mitchell & Laurie Telsey
Rick Tempone &
Kevin J. Harty
Stacey Thal
Daniel Theodore
Jon Tilley
Autumn Tilson
Ran Tokman
Addie & Gary Tomei
Patricia Townsend
John Traynor
Bryan Trussel
Camille Upshaw
Philip Van Munching
Ernest Vickroy
Patricia Voight
Ian Volek
Christopher Waddell
Ellen Walters
Michael Weller
Carolyn Wells
Alan Werner
David Werner
Joan West
Susan Westerman
Greg White
David Whitfield
Janine &
Jonathan Whitney
Susan & Lewis Wirshba
Jane Wise
Lori Witte
Wendy Wright
Suzanne Yadav
Paul Zagardo
Janet Zinn
Elizabeth Zuch

MISCAST SUPPORT

Last year, MCC was thrilled to return to the Hammerstein Ballroom for Miscast22—and for the first time ever, we gathered both in-person in New York and globally online! We’re so grateful to all of our donors who helped make this event a worldwide phenomenon, and look forward to celebrating Miscast23 in Spring 2023.

DIAMOND

Liz & Ken Whitney

PLATINUM

Robert DiDiano
Claudia & David Hirsch
Susan & Ronald Frankel
Mitch & Joleen Julis
David L. Lloyd &
Meg Mortimer
Marianne & Stephen Mills
Ruth & Harold Newman†
Susan Raanan &
Robert Fleischer
Marilyn Sobel &
Ben Cohen
Janine &
Jonathan Whitney

GOLD

Marjorie &
Frederic Altschuler
Baseline Theatrical
Nicole &
Stephen Eisenberg
Cathy Glaser &
Steve Semlitz
Jodi & Marc Schneider
Jeffrey Seller/Hamilton
Stephen Sills
Tiger Baron Foundation
WarnerMedia
Wells Fargo Private Bank

BRONZE

Javan Bunch
CBS & Paramount+
Barbara Doran
Susan Edelstein
Rachel & Melvin Epstein
Judy Garson &
Steven Rappaport
Hakluyt & Company
John & Jessica
Greenwood
Michael Mealiffe &
Dean Pitchford
Morgan Stanley
MJ The Musical
Neil & Shelly Mitchell

Erik Piecuch &
Alex Bong Wright
United Talent Agency
Wells Fargo Advisors, LLC
Lois Weinroth
Matthew Hui

PRODUCER

Elizabeth Armstrong
Susan Bruce &
Peter Hedges
Lewis Cole
Frederick &
Diana Elghanayan
Robert Greenblatt
Sam & Mary Haskell
Todd & Karen Holson
Jordan Hyatt &
Peter Dolchin
Michael Patrick King
Nederlander Organization
The Robert W. Wilson
Charitable Trust
Alisa Savitz

PLAYWRIGHT

Iris Abrons
Lynn Angelson
Mel & Linda Brosterman
Judy & Frank Greenberg
Kelly Fowler Hunter
Devashish Jain &
Marc-Antoine Denechaud
Chelsea Kellogg
Deborah & Mark Kopinski
Kristine Louis Reynal &
Max Reynal
Susan Lichenstein &
John Rokacz
Gina Maria Leonetti
Dr. & Mrs. Jerome &
Elizabeth Levy
Theresa Martinac
Movado Group Foundation
Joseph Rokacz &
Larry Gordon
Jac Scheiner
Jonn Wasser

DIRECTOR

John Amalfi
Emily Baugher
Suman Chakraborty
City National Bank
Graham “Gray” Coleman
Andrea Collins
Michael Contini
David Crane
Kareem Crayton
Francine Della Badia
Kurt Deutsch
Peter Friedland
Marjorie & Roy Furman
Marilyn Garcy
Amy & Frank Garrison
Mary Goldberg
Carol Goldman
Xochitl Gonzalez
Glenn Gunderson
Brad Hames
Ian Harris
Jon Kamen
Jason Katims
Kate Lear
Beth Lewis
Raj Maheshwari
Don McCoy
Lorne Michaels
Jennifer Melin Miller &
David Miller
Jessica Mitchell
Peter McKown
Wanda Olson
Piper Perabo
Susan Rosenberg &
Peter Braverman
David Ross
Fiona Rudin
Neal Rubinstein
Linda Sirow
Helene Stein
Jill Surdyka-Kim
Jenni Swan
Frederick Taylor
Aimee Telsey
Carol & Joel Thea
Viking Entertainment

THE CAMPAIGN FOR MCC THEATER

MCC THEATER is proud to thank everyone who has supported the Campaign for MCC THEATER. You helped make our dream of a home of our own a reality. Our new home allows us to deepen our mission and encourage greater collaboration amongst all of our artists, students, and audiences.

Special thanks to The Office of the Mayor of New York City, Eric Adams; The New York City Department of Cultural Affairs, Commissioner Tom Finkelpearl; The New York City Council, Speaker Corey Johnson; and the Office of Manhattan Borough President, President Gale Brewer for their dedication to the arts and their foundational support for this project.

Ruth & Harold Newman†
Julie & Marc Platt
The Robert W. Wilson Charitable Trust

Susan & Ronald Frankel Cathy Glaser & Steve Semlitz Howard Gilman Foundation Marianne & Steven Mills Steve Richardson & Kirk Rubi Ms. Barbara Shulman Amy & Stephen Sills Elizabeth & Ken Whitney	Dede Harris Claudia & David Hirsch David L. Lloyd, Jr. & Meg Mortimer Reeva & Ezra Mager Shelly & Neil Mitchell Erik Piecuch & Alex Bong Wright Sheila Steinberg Marilyn Sobel & Ben Cohen Pam & Larry Tarica Lois Weinroth Janine & Jonathan Whitney	Doug Hughes Leslie Larson & Don Katz Stephanie & Ron Kramer Lorie Cowen Levy & Charles J. Levy, Jr. Dr. & Mrs. Jerome & Elizabeth Levy John Lewin & Margie Becker-Lewin Virginia & Robert LuPone† Bruce MacAffer Marina & Bill Marcoux Robert & Fulvia McCrie William Megevick & George Calderaro Leslie Lewit & son, Jacob Lewit
The Bonnie Cashin Foundation Dr. Gail Furman† Roy Furman, Jill Furman, & Stephanie Furman Darrow The Garson Rappaport Family The Blanche & Irving Laurie Foundation Gina Maria Leonetti Susan Raanan & Robert Fleischer Eric Rosedale Playwriting Fund Rosemarie† & Lou Salvatore	Lewis G. Cole Ann Dickinson and Richard Purington Liz Armstrong Maureen & Bill Barton Brenda & David Bass Karen Kayser Benson† Linda & Mel Brosterman Jan & Will Cantler Elizabeth Columbo Katherine & Costa Darras Brian Davidson & Michael Schultz Carol G. Deane Cory & Bob Donnalley Charitable Foundation Jody Falco & Jeffrey Steinman Cynthia & Herbert Fields Amy & Frank Garrison Mary Cirillo-Goldberg & Jay Goldberg† Peter Hedges & Susan Bruce	Dahlia Neiss & Family Anh-Tuyet Nguyen† & Robert Pollock Brette Popper & Paul Spraos Dr. Robert Press Kristine Louis Reynal & Max Reynal Roselle Baldwin Productions Sherry Schwartz Ted Stephens III & Dmitry Yakimchuk Jenni Swan Bernard Telsey & Anne Marino Joan Weingarten & Bob Donalley Patricia & Mark Willis

The funds listed below provide ongoing support to several of MCC’s key initiatives.

BONNIE CASHIN COSTUME DESIGN FUND provides support for costume design in one production each season.
THE GARY PLATT INITIATIVE FOR NEW MUSICALS supports artistic development and production of new musicals.
STEVE RICHARDSON AND KIRK RUBI COLLEGE MENTORSHIP FUND supports MCC Youth Company college and career preparation activities.
ERIC ROSEDALE PLAYWRITING FUND supports the annual FreshPlay for the MCC Youth Company.
THE R&S SHULMAN FUND supports artistic development and production of new plays, with a focus on work by African American Playwrights

ARTIST COUNCIL

MCC THEATER wishes to acknowledge Artists and Industry Leaders who have generously donated their time and talent to support MCC THEATER’s mission through our Education & Outreach programs, annual MISCAST Gala, and Online Auction.

Ramón Real Vargas Alanis	Beanie Feldstein	The National Black
ChiChi Anyanwu	Dominique Fishback	Theater
Annaleigh Ashford	Lenni Yesner Foreman	Ana Nogueira
Nissy Aya	Jennifer Garner	Kelli O’Hara
Melissa Barrera	Paige Gilbert	Leslie Odom Jr.
McKinley Belcher III	Ross Golan	Al Parker
The Billie Holiday Theater	Renee Elise Goldsberry	Annie Paul
Jocelyn Bioh	Leslie Grace	Piper Perabo
Nick Blaemire	Heather Headley	Dylan Pickus
Brooklyn Academy of Music	Lucas Hedges	Billy Porter
Norbert Leo Butz	Joshua Henry	Isaac Powell
Christian Cacigal	Andrea Hiebler	Travis Raeburn
Sandra Caldwell	Cheyenne Jackson	Amrita Ramanan
Nicole Capatasto	Evan Jonigkeit	Lauren Ridloff
Juan Castano	Jai’len Josey	Nicolette Robinson
Kristian Charbonier	Alex Lacamoire	Susan Rudick
Sarah Chavez	LaChanze	Christina Russo
Kenneth Cole	Cedric Lamar	Thomas Sadoski
Julissa Contreras	Robert Leng	Phillipa Soo
Kareem Crayton	Victoria Libertore	Gabriella Steinberg
Gavin Creel	Judith Light	Marisa Tomei
Trip Cullman	Eric Lockley	Kelly Marie Tran
Hugh Dancy	Donja R. Love	Aaron Tveit
Robin De Jesus	Zosia Mamet	Channie Waites
Developing Artists	Julianna Margulies	Adrienne Warren
Edison Ventura Mata Diaz	Jose Solis Mayen	Alice Whitley
Ivon Edebiri	Rob McClure	Patrick Wilson
Raul Esparza	Idina Menzel	The Women’s Project
Robert Fairchild	Laurie Metcalf	Kit Yan
Halley Feiffer	Ingrid Michaelson	
	Lin-Manuel Miranda	

THE GARY PLATT INITIATIVE FOR NEW MUSICALS

The GARY PLATT INITIATIVE FOR NEW MUSICALS supports the costs of developmental readings, workshops, and new musical productions at MCC, with the goal of inspiring new voices and adding to the American musical theater canon.

The Initiative was formed in 2019 by Julie and Marc Platt and their family to honor the memory of their uncle and great-uncle, Gary, whose lifelong love of musical theater instilled in them a passion for this unique storytelling art form.



the CAST of ALICE BY HEART / photo by DEEN VAN MEER

To learn more about THE GARY PLATT MUSICAL THEATER INITIATIVE, please contact Anne Myers at (212) 727-7722 ext. 236 or amyers@mcctheater.org.

OUR 2022-23 SEASON

OCT 2022

new musical

ONLY GOLD

music & lyrics by **KATE NASH**
book by **ANDY BLANKENBUEHLER**
and **TED MALAWER**
directed and choreographed by
ANDY BLANKENBUEHLER



critically acclaimed play

SOHO REP's WOLF PLAY

in collaboration with MA-YI THEATER COMPANY



by **HANSOL JUNG**
directed by **DUSTIN WILLS**

JAN 2023

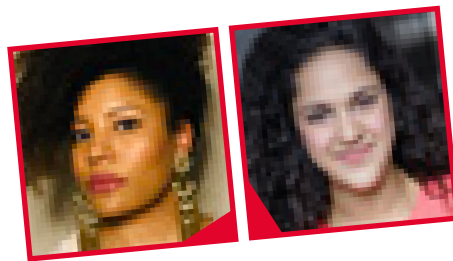
MAY 2023

new play

BEEES & HONEY

in collaboration with THE SOL PROJECT

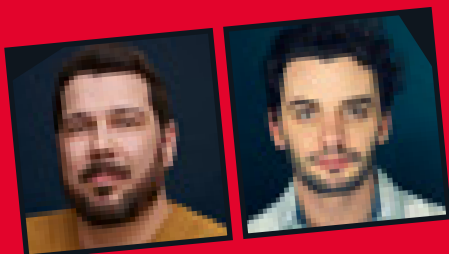
by **GUADALÍS DEL CARMEN**
directed by **MELISSA CRESPO**



new play

WET BRAIN

co-production with PLAYWRIGHTS HORIZONS



by **JOHN J. CASWELL, JR.**
directed by **DUSTIN WILLS**

MAY 2023

Why become a SUBSCRIBER or MEMBER?

GREAT SEATS

PRIORITY BOOKING gets you advance access to tix—before the general public.

FLEXIBILITY

Choose the shows you want to see when you want to see them with **NO-FEE TIX EXCHANGES**.

SAVE MONEY

All 4 productions for 1 low price!

BRING FRIENDS

Discounts on your guest tickets.

Which one is best for you?

SUBSCRIPTION	MEMBERSHIP	FLEX TIX PACKAGE
PACKAGES start at \$220* <ul style="list-style-type: none">• Valid for all performances• Unlimited no-fee exchanges• Excludes Premium Seats• Book your tickets before the general public• 20% off Guest Tickets• Access to premium seats for an additional \$15 per ticket	PAY ONLY \$55* UP FRONT AND UNLOCK \$45 TIX <ul style="list-style-type: none">• Valid for all performances• Unlocks \$45 Preferred Seats for plays and \$55 Preferred Seats for musicals• Upgrade to a Premium Seat for an additional \$15 per ticket• Up to 3 no-fee exchanges per production• Book tix before the general public• 10% off Guest Tickets	PACKAGES start at \$220* <ul style="list-style-type: none">• Valid for all performances• Can use up to 4 tix per production• Book tix before the general public <p><i>Tickets are for Preferred Seats. Premium Seats are not included in this package.</i></p>

**A one-time \$12 per package handling fee will be included.*

Call (646) 506-9393 or visit MCCTHEATER.ORG to save.

 **MCC**
THEATER