

special musical event

WALK ON THROUGH: CONFESSIONS OF A MUSEUM NOVICE



 **MCC
THEATER**

MCC **THEATER**

BERNIE TELSEY and **WILL CANTLER** / artistic directors
BLAKE WEST / executive director

present

WALK ON THROUGH: CONFESSIONS OF A MUSEUM NOVICE

book, music & lyrics by **GAVIN CREEL**

with **SASHA ALLEN, MADELINE BENSON, GAVIN CREEL,
CHRIS PETERS, COREY RAWLS, RYAN VASQUEZ, SCOTT WASSERMAN**

scenic design
**I. JAVIER
AMEIJEIRAS**

costume design
**JEFF
MAHSHIE**

lighting design
**JIYOUN
CHANG**

sound design
**ALEX
NEUMANN**

projection design
**DAVID
BENGALI**

music director
**MADLINE
BENSON**

arrangements
**MADLINE BENSON,
CHRIS PETERS**

orchestrations
**MADLINE BENSON,
CHRIS PETERS, COREY RAWLS,
SCOTT WASSERMAN**

electronic music design
**SCOTT
WASSERMAN**

production stage
manager
**LAURA
HIRSCHBERG**

dei consultant
**NICOLE JOHNSON/
HARRIET TUBMAN
EFFECT**

casting
**THE TELSEY OFFICE
RACHEL HOFFMAN, CSA**

directed by **LINDA GOODRICH**

general
manager
**BETH
DEMBROW**

director of
finance
**LINDA
WONG**

director of public
engagement & education
**MEGGAN
GOMEZ**

director of
development
**ANNE
MYERS**

director of marketing
& audience services
**ABIGAIL
LANGSTED**

director of production
& facilities
**STEVE
ROSENBERG**

manager of artistic
development
**ELISSA
HUANG**

manager of musical
programming &
development
**SCOTT
GALINA**

publicity
**MATT ROSS PR /
MATT ROSS,
NICOLE CAPATASTO,
LIZ LOMBARDI,
GRACE WALKER**

Presented in the **SUSAN & RONALD FRANKEL THEATER**

WALK ON THROUGH: CONFESSIONS OF A MUSEUM NOVICE was originally commissioned by
The Metropolitan Museum of Art's Live Arts Department

WALK ON THROUGH: CONFESSIONS OF A MUSEUM NOVICE was developed at the
Eugene O'Neill Theater Center's 2022 National Music Theater Conference
Tiffani Gavin Executive Director Alexander Gemignani Artistic Director

WALK ON THROUGH: CONFESSIONS OF A MUSEUM NOVICE was developed
with support from the Hermitage Artist Retreat
Andy Sandberg Artistic Director

Produced in association with All I Can Do Limited Liability Company

COMPANY

**SASHA ALLEN
MADELINE BENSON
GAVIN CREEL
CHRIS PETERS
COREY RAWLS
RYAN VASQUEZ
SCOTT WASSERMAN**

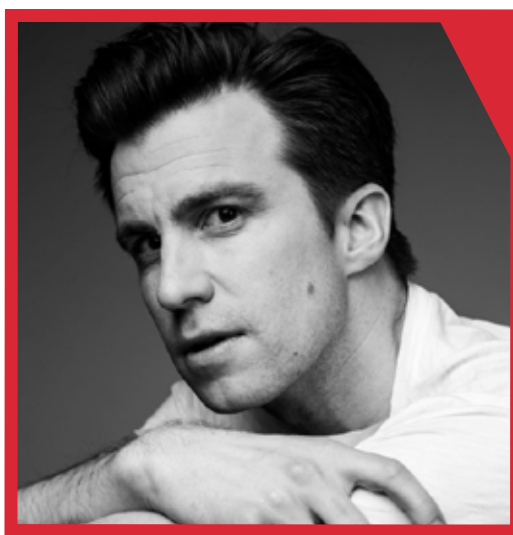
assistant stage manager.....**PEDRO A. HERNÁNDEZ**



SASHA ALLEN



MADELINE BENSON



GAVIN CREEL



CHRIS PETERS



COREY RAWLS



RYAN VASQUEZ



SCOTT WASSERMAN

WHO'S WHO

GAVIN CREEL (*Book, Music, & Lyrics*) is a Tony® Award winner for his performance as “Cornelius Hackl” in HELLO, DOLLY! starring Bette Midler and David Hyde Pierce. Recently returned from touring the country in the Grammy-winning revival of INTO THE WOODS, Creel made his Broadway debut in THOROUGHLY MODERN MILLIE, for which he received his first Tony nomination. He then went on to star in the Broadway productions of LA CAGE AUX FOLLES, HAIR (Tony Award nomination), THE BOOK OF MORMON, SHE LOVES ME, WAITRESS, and INTO THE WOODS. Gavin received an Olivier Award for his portrayal of “Elder Price” in the London production of THE BOOK OF MORMON and also appeared on the West End in MARY POPPINS, HAIR, and WAITRESS. On television, Creel has performed a PBS solo concert special with “Stars on Stage,” appeared in the premiere episodes of Ryan Murphy’s anthology series “AMERICAN HORROR STORIES” and starred alongside Julie Andrews in “ELOISE AT THE PLAZA” and “ELOISE AT CHRISTMASTIME.” As a songwriter, Gavin has released three original albums: “GoodTimeNation,” “Quiet,” and “Get Out,” and is workshopping material for a new musical theatre piece that will debut in early 2024 at his alma mater, The University of Michigan School of Music, Theatre and Dance. Creel was the recipient of a Hermitage Artist Retreat Writing Fellowship, a featured composer at The O’Neill National Musical Theatre Conference, and a co-founder of Broadway Impact, the first and only grassroots organization to mobilize the nationwide theater community in support of marriage equality.

LINDA GOODRICH (*Director*) has directed and choreographed throughout the United States, Europe and Japan. Conceived, Directed and Choreographed several new works: HOTEL CALIFORNIA with music by The Eagles, DANCE WITH ME featuring the music of AIR SUPPLY, GIBSON FLECK, A GOOD BOY, choreographed world premieres of EVERYTHING’S DUCKY, and the adaptation of GOOD NEWS!- Licensed by MTI. Tours: CABARET – Europe, SINGIN’ IN THE RAIN – U.S. and Japan. International: Theatre Carre - Amsterdam, Music Theatre International - Italy. NY Theatre: Metropolitan Museum of Art Live Arts Series, Radio City Music Hall, Carnegie Hall, Signature Theatre, N.Y. Musical Theatre Festival. Regional Theatre: Goodspeed Opera House, Papermill Playhouse, Walnut Street Theatre, TheatreWorks Palo Alto, Cincinnati Playhouse, The Repertory Theatre of St. Louis, the 5th Ave. Theatre, MTWichita, Sacramento Bway Series. Linda is a Professor and interim Chair of the Dept. of Musical Theatre at the University of Michigan. Member SDC. www.lindagoodrich.com

SASHA ALLEN is an American singer and actress. Her film and television credits include “CAMP,” “BLUE BLOODS” (CBS), and a recurring role on “POWER” (Starz). Sasha portrayed Dionne in the 2009

WHO'S WHO

Broadway revival of HAIR and reprised her role in London the following year. Her additional theatre credits include the national tour of PIPPIN as the Leading Player and the Public Theater's revival of FOR COLORED GIRLS... (New York Times Critic's Pick). Sasha began her career in the music industry as a vocalist singing with the likes of Christina Aguilera, Alicia Keys, John Legend, Leona Lewis, Usher, Ariana Grande, and Sara Bareilles. In 2013, she was a semi-finalist on the fourth season of The Voice. In 2016 she joined the Rolling Stones on their No Filter tour, notably performing "Gimme Shelter" with Mick Jagger, and most recently completed their Sixty tour in 2022.

MADLINE BENSON (*Music Director, Arrangements, Orchestrations, Keyboard, Vocals*) is a music director and songwriter based in New York. On Broadway, she has served as conductor for WAITRESS and SIX and keyboardist for BACK TO THE FUTURE and WAR PAINT. Selected MD credits: BHANGIN' IT (La Jolla Playhouse), WE LIVE IN CAIRO (ART), RAGS PARKLAND... (Ars Nova), RAGTIME on Ellis Island, AN OCTOROON (TFANA), FUTURITY (Ars Nova/Soho Rep), SKIN OF OUR TEETH (TFANA). Madeline is the musical adapter of the stage versions of Disney's "TANGLED," "DESCENDANTS," and "FROZEN JR." She holds a B.A. in Classical Civilizations from Harvard University.

madeline-benson.com

CHRIS PETERS (*Arrangements, Orchestrations, Guitar, Vocals*) is a singer-songwriter, producer, guitarist, and multi-instrumentalist based in New York City. Raised on the 70s folk songwriting of Joni Mitchell and the autobiographical storytelling of comedians like Mike Birbiglia, Chris writes and champions music that combines humor, story, and classic pop song forms. His EP, "Chris Peters, Grown-Up Singer," is available on all platforms.

COREY RAWLS (*Orchestrations, Drums*) graduated with a Master's degree in jazz studies from Rutgers University, Mason Gross School of Music, and continues to further his musical career by being active in various facets of the music industry. Corey is regularly performing/touring with artists nationally and internationally, producing music for various artists, composing music for film (www.parkriverproductions.com), and teaching. Corey is grateful for the support of his endorsers Yamaha Drums, Bosphorus Cymbals, and Collision Drumsticks.

RYAN VASQUEZ is thrilled to return to MCC this fall before starring as Noah Calhoun in THE NOTEBOOK on Broadway this season. Broadway: HAMILTON (Alexander Hamilton, standby for Aaron Burr, George Washington, Marquis de Lafayette/Thomas Jefferson,

WHO'S WHO

Hercules Mulligan/James Madison), WAITRESS (original Broadway cast), WICKED. Off-Broadway: THE WRONG MAN (The Man in Black, Drama Desk Award nomination). World Premiere productions of THE NOTEBOOK (Noah Calhoun, Chicago Shakespeare Theatre), THE OUTSIDERS (Darrel Curtis, La Jolla Playhouse) and WATER FOR ELEPHANTS (Jacob, Alliance Theatre). Film/TV: "THE GOOD FIGHT" (CBS), "THE CODE" (CBS), "CURB YOUR ENTHUSIASM" (HBO), and TICK...TICK...BOOM! (Netflix). Voice work: VIVO (Netflix), IN THE HEIGHTS film version. Proud Michigan grad.

SCOTT WASSERMAN (*Orchestrations, Electronic Music Design, Synthesizer, Vocals*) Broadway Electronic Music Design/Programming: HAMILTON, DEAR EVAN HANSEN, & JULIET, DIANA, THE GREAT COMET. Other Broadway: ESCAPE TO MARGARITAVILLE, ANNIE, and LEAP OF FAITH. Off-Broadway: HERE THERE BE DRAGONS (Orchestrator), INVISIBLE THREAD (Electronic Music Design). Regional: Orchestrator of DOUBLE HELIX at Bay Street Theatre, Music Supervisor & Orchestrator of JOHNNY AND THE DEVIL'S BOX at Cumberland County Playhouse. Other Regional: LaJolla Playhouse, Hartford Stage, Stages St. Louis, The Alliance, Signature, Center Theatre Group, ACT of Connecticut. Scott's orchestrations have been performed at Carnegie Hall, Radio City Music Hall, and The Kennedy Center, and on the albums Losing My Mind: A Sondheim Disco Fever Dream, Johnny & The Devil's Box: The Concept Album, Joel B. New's Cabot Cove, and Sarah Stiles' You Can Ukulele With Me. Film, TV and Podcast credits include THE GREATEST SHOWMAN, HAMILTON on Disney+, BEAUTY AND THE BEAST Live on ABC, "FOSSE/VERDON," "CRAZY EX-GIRLFRIEND," The 2017 Tony Awards, "SESAME STREET," "WALLYKAZAM!," "21 CHUMP STREET" for "THIS AMERICAN LIFE," and "SONG SALAD." Love to Meghan, Hudson and Ellis. scott-wasserman.com

I. JAVIER AMEJEIRAS (*Scenic Designer*) Broadway concept illustration: HERE LIES LOVE, MRS. DOUBTFIRE, BEETLEJUICE, and HAMILTON. Live event art direction and concept illustration: GREASE LIVE!, RENT LIVE! and THE ACADEMY AWARDS (2019-2022). Film concept illustration: JOKER: FOLIE A DEUX, ALADDIN, THE GREATEST SHOWMAN, BEAUTY AND THE BEAST, THE INTERN, MOONRISE KINGDOM, JOY, DOUBT, STEP UP (1,2, & 3), 27 DRESSES. TV concept illustration: "AMERICAN HORROR STORY," "GRACE AND FRANKIE," "THE GILDED AGE" S2, "SMASH" S1. TV art direction: "THE BIG BRUNCH" and "THE WHO WAS SHOW." Javier is a member of the Academy of Motion Picture Arts and Sciences.

WHO'S WHO

JEFF MAHSHIE (*Costume Designer*) Broadway: KISS ME KATE, SHE LOVES ME (Tony and Drama Desk Nominations, OC Award), THE TERMS OF MY SURRENDER, NEXT TO NORMAL, THE LITTLE DOG LAUGHED. Off Broadway: BOB & CAROLE & TED & ALICE (Drama Desk & Outer Critics Nominations) GOOD FOR OTTO, EVENING AT THE TALKHOUSE, THE UNAVOIDABLE DISAPPEARANCE OF TOM DURNIN, LAUGHING WILD, MARIE AND BRUCE, GIANT, THE KID, THE CORN IS GREEN, GRUESOME PLAYGROUND INJURIES, NEXT TO NORMAL, BECKY SHAW, THE LITTLE DOG LAUGHED, THE SCENE, SHOW PEOPLE, PRIVILEGE, HURLYBURLY (Drama Desk Nomination). Follow @jeffmahshie

JIYOUN CHANG (*Lighting Designer*) Broadway: JAJA'S AFRICAN HAIR BRAIDING, THE COTTAGE, KPOP BROADWAY, FOR COLORED GIRLS WHO HAVE CONSIDERED SUICIDE/WHEN THE RAINBOW IS ENUF (Tony Nom), SLAVE PLAY (Tony, Drama Desk, Henry Hewes Nom). Recent credits: STEREOPHONIC (Playwrights Horizons), THE FAR COUNTRY (Drama Desk, Lucile Lortel Nom), MARYS SEACOLE (Henry Hewes Nom), THE WORLD IS ROUND (Obie Award), BINA'S SIX APPLES (Suzi Bass Award), The Public, Roundabout, NYTW, MCC, Signature, Chicago Lyric Opera, ATC, Guggenheim, Berkeley Rep, CalShakes, Guthrie, Old Globe, OSF. Special thanks to Eva and David.

ALEX NEUMANN (*Sound Designer*) Broadway: INTO THE WOODS (2022), and over 20 shows as associate designer. NY City Center ENCORES! INTO THE WOODS, OLIVER!, PAL JOEY. National Tours: INTO THE WOODS, FIDDLER ON THE ROOF, THE KING AND I. Off-Broadway: RACHEL BLOOM: DEATH, LET ME DO MY SHOW, THE ATHEIST. Regional: SENSE AND SENSIBILITY (American Repertory Theatre, Portland Center Stage), BUS STOP (Huntington Theatre Company), THE ATHEIST (Williamstown / Huntington), ETHER DOME (Alley Theatre, La Jolla Playhouse, Hartford Stage, Huntington Theatre Company), 39 STEPS (Olney Theatre Center), GOING TO SEE THE KID (Merrimack Repertory Theatre), MILLION DOLLAR QUARTET. Events/Other: WALK ON THROUGH (workshop), DRAMA DESK AWARDS(2017-2019), A TRIBUTE TO THE PRESIDENTIAL SCHOLARS (Kennedy Center, 2016-2019), FOOTLOOSE (Norwegian Cruise Lines). Awards: Tony Award Nomination, Drama Desk Winner – INTO THE WOODS. www.soundsneu.com

DAVID BENGALI (*Projection Designer*) David Bengali is a projection and media designer based in New York City. Selected recent and upcoming designs include: Broadway: THE THANKSGIVING PLAY; 1776; Off-Broadway including: TWILIGHT: LA 1992 (Signature - Henry Hewes Award, Drama Desk Nom.); Anthony Rapp's WITHOUT YOU (New World

WHO'S WHO

Stages); MONSOON WEDDING (St. Ann's Warehouse); THE VISITOR (The Public Theater - Lortel Nom.); CIRCLE JERK (Fake Friends - Obie Award, Drama League Nom.); EINSTEIN'S DREAMS (Prospect/59E59 - Drama Desk Nom.); VAN GOGH'S EAR (ERC - Drama Desk Nom.); THE GREAT LEAP (Atlantic); Regional including: La Jolla Playhouse, A.R.T, Yale Rep, Dallas Theater Center, Alliance; National Tours of: PETER PAN, 1776; ROCKIN' ROAD TO DUBLIN. David was also a 2017-2019 Arts Fellow at the Princeton University Lewis Center for the Arts. MFA: NYU.

LAURA HIRSCHBERG (*Production Stage Manager*) is a New York City-based stage manager, director, and playwright. She began her journey with WALK ON THROUGH in 2021 at The Met. Two years later, she is thrilled to be making her Off-Broadway debut with this wonderful team at MCC. Other favorite credits include: AAAB: BEND (Kampnagel International Summer Festival), THE MOUNTAINTOP (Arc Stages), BABES INTOYLAND (Lincoln Center), PETER AND THE WOLF (BAM), MAGIC & MAYHEM (Workshop Theater), IMPACTO (Met Live Arts), and Black Grace Dance Company's United States and New Zealand tours. Laura is the resident stage manager for the Spiegel tent, part of Bard Summerscape. www.laurahirschberg.com

PEDRO A. HERNÁNDEZ (*Assistant Stage Manager*) is a stage manager, director and photographer from Puerto Rico. Recent credits include: WICKED National Tour (Sub ASM), RENT 25th Anniversary Farewell Tour (1st ASM), HARRY POTTER AND THE CURSED CHILD (Broadway PA), EMOJILAND (Off-Broadway Sub Run Crew/PA), ROCKTOPIA (Broadway PA). He is the co-creator of "¿BABY BLUE?," a multimedia experience set to the music of Gian Perez and directed by Cameron King. "¿BABY BLUE?" was performed at Ars Nova's ANT Fest in June 2023. You can find his photography and videography work at pedrohernandezart.com

HARRIET TUBMAN EFFECT (HTE) (*Diversity, Equity & Inclusion*) is a human resource center and institute for justice advocacy and research. The organization's mission is to dismantle systemic oppression by producing participatory-action research, human resource initiatives and reallocating wealth to Black and Brown DEI consultants across American industries. HTE is also home to the "Edify 5-Step Dismantling Systemic Oppression" program and serves as DEI continuing education resource for theater, TV and film. Gavin Creel and Nicole Johnson have worked together in their reallocation of wealth efforts since the inception of Harriet Tubman Effect in 2021 impacting strategy for ticketing initiatives, equitable budgeting and advocacy in theatrical settings.

WHO'S WHO

THE TELSEY OFFICE (*Casting*) With offices in both New York and Los Angeles, The Telsey Office casts for theater, film, television, and commercials. The Telsey Office is dedicated to creating safe, equitable, and anti-racist spaces through collaboration, artistry, heart, accountability, and advocacy.

ACTORS' EQUITY ASSOCIATION ("Equity"), founded in 1913, is the U.S. labor union that represents more than 51,000 professional Actors and Stage Managers. Equity fosters the art of live theatre as an essential component of society and advances the careers of its members by negotiating wages, improving working conditions and providing a wide range of benefits, including health and pension plans. Actors' Equity is a member of the AFL-CIO and is affiliated with FIA, an international organization of performing arts unions. Equity is governed by its own members through an elected Council, representing principal actors, chorus actors and stage managers living in three regions: Eastern, Central and Western. Members at large participate in Equity's governance through a system of regional Boards and Committees. Equity has 28 designated area liaison cities with over 100 members each.
#EquityWorks



The actors and stage manager employed in this production are members of Actor's Equity Association, the union of professional actors and stage managers in the United States.



The Director is a member of the **STAGE DIRECTORS AND CHOREOGRAPHERS SOCIETY**, a national theatrical labor union.



UNITED SCENIC ARTISTS



Council on the Arts

WHO'S WHO

STAFF FOR WALK ON THROUGH

Company Manager	Frances Ramos
Production Manager.....	Steve Rosenberg
Assistant Production Manager.....	Charlie Wheatley Meffe
Production Stage Manager	Laura Hirschberg
Assistant Stage Manager	Pedro A. Hernández
Production Assistant	Ana Muñoz
Music Assistant & Copyist.....	Ian Chan
Associate Scenic Designer.....	Emmie Finckle
Assistant Costume Designer.....	David Goldberg
Associate Lighting Designer	Jacob Zedek
Associate Sound Designer	Nathan Rubio
Associate Projection Design.....	Camilla Tassi
Assistant Projection Design.....	Benji Arrigo
Watchout Programmer.....	Hannah Tran
Additional Projection Animation.....	Elizabeth Barrett, Taylor Edelle Stuart
Technical Director / Deck Carpenter	Peter Strand
Deck Carpenter/Stage Hand	Morgan Southwell
Carpenters.....	Sean George, Connor Paradis, Ian Stark, AJ Taysom, Mia Wilson, Zach White, Johncarlo Zani
Costume Shop Manager	Caitlin Dixon
Wardrobe Supervisor.....	Devon James
Stitchers.....	Claudia Diaz, Dara Fargotstein, Lisa Renee Jordan
Hairstyling.....	Ryan Dunleavy, Simone Henderson
Makeup.....	Mauricio Ramos
Production Audio.....	Max Baines
Sound Mixer/A1.....	Carin Ford
A2.....	Marion Ayers
Audio Crew	Alex Brock, AJ Glover
Production Electrician	John Tees III
Lighting Programmer	Roya Abab, Manuel Da Silva, Kelley Shih
Video Programmer.....	Hannah Tran
Light Board Operator	Arran Bowen
Lighting Crew	Jamie Crockett, Ariana Finamore, Ben Free, Markus Johnson, Cubby Terry Jr., Laz Nazario, Vincent Procker, Diane Tees , Alena Thomas, Danielle Verkenes
Production Video Engineer	Aaron Gonzalez
Assistant Video Engineer	Nate Brown
Video Crew	Chris Cornwell, Will Vieira, Aidan Sturgeon, Sebastian Braccia
Key Art Design	The Numad Group / Ted Stephens III, Brendan Whipple
B-Roll	Bardo Arts
Scenery.....	Stone Dog Studios
Jewlery.....	Sorrell Originals
Lighting Rental.....	PRG Lighting
Sound Rental	Sound Associates, Inc.

CASTING

The Telsey Office
Rachel Hoffman, CSA
Rashad Naylor

WHO'S WHO

SPECIAL THANKS

Lisa Alexander-Taylor, Sara Bareilles, Kyle Beckley Abourizk, Jim and Nancy Creel, Dominic Dorset, Kerrick Dougherty, Gina Ferrara, Erin Flannery, Jenny Gersten, Seth Hoff, Scott Henderson, Karen Johnston, David Kalodner, Andrew Keenan-Bolger, Celia Keenan-Bolger, Devin Keudell, Kayla Kuzbel, Justin Mendoza, Marianne Mills, Michael Moore, Daryl Morey, Ben Moss, Terence Odonkor, Brandon Pearson, David Hyde Pierce, Matt Quam, Melody Racine, Sherisse Rogers, Ximone Rose, Kevin Ryan, Zeina Salame, Diane Scott, Harris Schwartzberg, Douglas Sills, Mary Solomon, Ann Tenenbaum, Sam Theobald, Bobbie Theodore, Limor Tomer, Meg Toohey, John Tuohy, Marques Walls, Donald Ware, Audrey Rose Young

Infinite Scenic Studios, Joe Hetterly, LanternTix MPG One Wellness / Michelle Rodriguez
MPT, OCS, CMPT

WHO'S WHO

MCC THEATER STAFF

Artistic Directors.....	Bernie Telsey, Will Cantler
Executive Director	Blake West
General Manager.....	Beth Dembrow
Associate General Manager.....	Brendan McNamara
Company Manager.....	Frances Ramos
Administrative Assistant.....	Hannah Hernandez
Director of Finance	Linda Wong
Finance & Business Manager.....	Laura Knutzen
Finance Assistant.....	Hayley Isaacson
Manager of Artistic Development	Elissa Huang
Manager of Musical Programming & Development	Scott Galina
Artistic Assistant.....	Penzi Hill
Director of Production & Facilities.....	Steve Rosenberg
Facilities Manager.....	Steve Hail
Assistant Production Manager.....	Charlie Meffe
Costume Shop Manager	Caitlin Dixon
Building Consultant.....	Jason Walters
Director of Development.....	Anne Myers
Associate Director of Development	Vinny Martini
Development Consultant.....	Sandra Davis
Manager of Institutional Giving.....	Carrie O'Dell
Special Events Coordinator	Kayla Campise
Individual Giving Coordinator.....	Robin Weiner
Development Operations Associate.....	Kristina Dizon
Outbound Fundraising Consultant	Kel Haney
Outbound Fundraising Team	Sam Hood Adrain, Giuliana Carr, Alessandra Migliaccio, Keith Weiss
Director of Marketing & Audience Services	Abigail Langsted
Audience Development Consultant.....	Nikki Vera
Audience Services Manager	Josué Hernández
Marketing Associate	Marcellis Cutler
Marketing & Audience Services Assistant.....	Choice Plasencia
Graphic Design & Videography.....	The Numad Group / Ted Stephens III, Brendan Whipple, Tony Cotte
Press Representatives.....	Matt Ross PR/Matt Ross, Nicole Capatasto, Liz Lombardi, Grace Walker
House Managers.....	Erik De Jesus, Alejandra Ramos, Destiny Rivera
Assistant House Managers	Destiny Rivera
Ushers.....	Natalie Almanzar, Tom Bagley-Vas, Al-Akhir Fletcher, Branden Mangan, Luis Martinez, Alyssa Sanchez, Seymour Shaw, Leandra Torres
Box Office Staff.....	Natalie Almanzar, Anissa Griego, Judith Jimenez, Branden Mangan
Director of Public Engagement & Education.....	Meggan Gomez
Manager of Education Programs	Dee Hughes
Public Engagement & Education Assistant	Dom Martello
Brooklyn Youth Company Director	Vickie Tanner
Youth Company Performance Lab Co-Directors	Kevin Carillo, Javon Q. Minter
Youth Company Playwriting Lab Director	Juan Ramirez, Jr.
Youth Company Playwriting Lab Assistant Director	Alexander Lambie
Senior Teaching Artists.....	Matt Higgins, Raphael Peacock
Teaching Artists	Marissa Stewart, Vickie Tanner
Youth Company Alumni Fellow.....	Isaiah Martinez
Security Team	Allied Universal Security Services
Janitorial Staff	Impressive Cleaning Services Inc.
Concessions.....	Sweet Hospitality

ART CREDITS

The following pieces within The Metropolitan Museum of Art's collection are showcased in
WALK ON THROUGH: CONFESSIONS OF A MUSEUM NOVICE

The Weeders Jules Breton, 1868

Ugolino and His Sons Jean-Baptiste Carpeaux, 1865-67

Mrs. N's Palace Louise Nevelson, 1964-67

Field and Tournament Armor of Johann Wilhelm (1530-1573) Duke of Saxe-Weimar

attributed to Anton Peffenhauser, ca. 1565

Bleu no. 1 Abdoulaye Konaté, 2014

Statue of Athena Parthenos, 2nd Century B.C.

Colossal Seated Statue of a Pharaoh, ca. 1919-1878 B.C.

Judith and the Head of Holofernes Lucas Caranach the Elder, ca. 1530

Roadside Halt Richard Parkes Bonington, 1826

Francis Brinley John Smibert, 1729

Jar with short neck, Korea, 5th-6th century

Stela of the God Bes, 4th century B.C.–A.D. 1st century

Donkey with packs on its back, Second Intermediate Period–Early New Kingdom, ca.
1991–1450 B.C

Merry Company on a Terrace Jan Steen, ca. 1670

Salvator Mundi Albrecht Dürer, ca. 1505

Smashed Strokes Hope Joan Snyder, 1971

Wisconsin Landscape John Steuart Curry, 1938-1939

America Today Thomas Hart Benton, 1930-1931

The North Cape by Moonlight Peder Balke, 1848

Buddha, probably Amitabha, early 7th century

The Horse Fair Rosa Bonheur, 1852-55

Carousel State Sam Gilliam, 1968

(mistikôsiwak (Wooden Boat People: Welcoming the Newcomers) Kent Monkman, 2019

Autumn Rhythm (Number 30) Jackson Pollock, 1950

The Organ Rehearsal Henry Lerolle, 1885

The Storm Pierre-Auguste Cot, 1880

Vsevolod Mikhailovich Garshin (1855-1888) Illia Repin, 1884

Untitled Gregory Crewdson, 2005

Untitled Film Still #48 Cindy Sherman, 1979

Soft Figure Robert Heinecken, 1964

Fragmentary Colossal Marble Head of Youth 2nd Century B.C.

Marble statue of youthful Hercules AD 69-96 CE

Marble statue of Herakles seated on a rock 1st or 2nd century CE

Marble torso of a seated man 1st or 2nd century CE

Marble head of an Athlete ca. AD 138-192

Marble portrait of the emperor Antonius Pius ca. AD 138-161 CE

Marble head of Herakles 1st century AD

From Williamsburg Bridge Edward Hopper, 1928

© 2023 Estate of Louise Nevelson / Artists Rights Society (ARS), New York

© 2023 Heirs of Josephine N. Hopper / Licensed by Artists Rights Society (ARS), NY

© 2023 The Jacob and Gwendolyn Knight Lawrence Foundation, Seattle / Artists Rights Society (ARS), New York

© 2023 The Pollock-Krasner Foundation / Artists Rights Society (ARS), New York

© Succession Alberto Giacometti / Artists Rights Society (ARS), NY 2023

OUR MISSION

“There’s no better life than a life in theater in New York City.”

—Bob LuPone (1946-2022), Founding Artistic Director

Our mission is to provoke conversations that have never happened and otherwise never would.

MCC THEATER was founded in 1986 as MANHATTAN CLASS COMPANY by a collective of young actors, writers, and directors determined to steer their own artistic development—and shake things up! That initial group included Artistic Directors **Bernie Telsey**, **Bob LuPone** and **Will Cantler**, since joined by Executive Director **Blake West**. Our increasingly expansive work continues today, in fond memory of Bob.

- **WE PRODUCE EXCITING THEATER.** We produce seasons of BOLD new plays and musicals by exceptional ARTISTS.
- **WE DEVELOP NEW WORK.** We develop NEW WORK by emerging and established artists through a rigorous process that encourages CREATIVE RISK-TAKING.
- **WE HONOR YOUNG VOICES.** Each year our education programs use the power of theater to ROUSE the imaginations of over 1200 high school STUDENTS across ALL FIVE BOROUGHES.
- **WE GET PEOPLE TALKING.** COLLABORATION and COMMUNITY are at the core of everything we do.

the CAST of WOLF PLAY / photo by JULIETA CERVANTES



EDUCATION PROGRAMS

Over twenty years ago, MCC Theater initiated a series of intensive in-school and after-school education programs that now serve approximately 700 New York City public high school students each year, offering them a platform to be heard and the opportunity to speak their truth. The goal of this work is to celebrate and honor the mosaic of identities of New York City's young people and their experiences in a non-competitive and socially conscious environment.

MCC's Youth Company serves NYC high school students through the Performance Lab, Playwriting Lab, the Ambassadors, and Brooklyn Youth Company. Participants attend weekly meetings that focus on ensemble building, devising, and writing. Company members also attend professional productions around New York City and master classes with guest artists during school breaks throughout the year. Performance Lab and Brooklyn Youth Company culminate in an annual original collaborative production titled **UNCENSORED**. Playwriting Lab ends their program with the **FRESHPLAY FESTIVAL**, where young writers' new plays are shared by professional actors and directors in two days of play readings. Ambassadors meet monthly to gain a fuller understanding of the industry by learning about a broad range of theater professions and visit non-profit theaters across the city.

Through **Classroom Partnerships**, MCC collaborates with New York City public high schools to integrate sequential arts curricula into English, Art, and Social Studies classes. The schools participating during the 2023-24 season are the George Washington High School Educational Campus, Baruch College Campus High School, Manhattan International High School, and the High School for Public Service, which also hosts the Brooklyn Youth Company.

Student Matinees make it possible for public schools with limited access to performing arts organizations to attend MCC productions.



PUBLIC ENGAGEMENT



In support of our mission to provoke conversations, MCC has created a full suite of free public engagement programs serving over 1000 people annually that center our mainstage productions and the themes that those works address.

LET'S TALK: Post-show Talkbacks offer audiences an opportunity to ask questions of the cast and creative teams. In Post-show Audience Conversations audiences engage with one another in conversations about the play they have just seen.

LET'S ENGAGE: Open Forums and Workshops feature activities and subject matter that uplift issues highlighted in our mainstage productions and are designed to enhance engagement, giving participants an opportunity to reflect on the work.

LET'S WATCH: Community nights offer social opportunities before shows for audience members to connect with each other and learn more about resources available to artists throughout the city.

JOIN US

MCC Youth Company Performance Lab's UNCENSORED: April 26 to May 5

MCC Youth Company Playwriting Lab's FRESHPLAY FESTIVAL: May 10 & 11

PUBLIC ENGAGEMENT EVENTS: [Click here for details and RSVP today!](#)

MCC Theater's Education Programs are supported by Axe-Houghton Foundation, Cornelia T. Bailey Foundation, Emily Davie and Joseph S. Kornfeld Foundation, Harold J. Newman† & Ruth Newman, the Eric Rosedale Playwriting Fund, Tiger Baron Foundation, New York State Council on the Arts, and public funds from the New York City Department of Cultural Affairs in partnership with the city council.

THE ROBERT W. WILSON MCC THEATER SPACE

Inaugurated on JAN 9, 2019, MCC's Hell's Kitchen home, **THE ROBERT W. WILSON MCC THEATER SPACE**, is a state-of-the-art complex designed for us to do what we do best: shake things up. The space houses two theaters, two rehearsal studios, extensive backstage facilities, administrative offices, and ample audience amenities.

THE NEWMAN MILLS THEATER is named for Ruth & Harold[†] Newman and Marianne & Steve Mills. As dedicated co-chairs of The Campaign for MCC THEATER, they led a successful fundraising effort in support of MCC's education and artistic programs.

THE SUSAN & RONALD FRANKEL THEATER is named for Susan & Ronald Frankel. They have been active with the company since 2015. Susan Frankel is also an MCC THEATER Board member.

ROBERT W. WILSON was a well-known and successful investor from the mid-1960's to the mid-1980's. After retirement, he devoted his life to philanthropy. He was a transformative philanthropist, primarily funding worldwide organizations in the preservation and conservation areas. An avid New Yorker, he was also involved with a number of New York's cultural institutions. He was a major supporter of, and held leadership roles with, the Brooklyn Botanic Garden, Environmental Defense Fund, The Metropolitan Opera, the Whitney Museum, and the World Monuments Fund. In addition, he and the Trust continue to support the above institutions and The Nature Conservancy, The New York Public Library, Central Park Conservancy, BAM, and the Wildlife Conservation Society.



LAND ACKNOWLEDGMENT

MCC THEATER wants to center our event in practices rooted in fostering community. We acknowledge how the PAST and the FUTURE converge on our PRESENT. MCC'S theater home sits on the UNCEDED land of the LENAPE people. We acknowledge that this stolen land was worked on by enslaved Africans. May this living land acknowledgement—to the LENAPE, their elders past and present, and their future generations, as well as to the experience of enslaved Africans and their descendants, serve as a starting ground for change.

PATRON PROGRAM

Every Patron is treated to....

- **PERSONALIZED TICKET SERVICE**—we reserve the best seats for you.
- **EARLY ACCESS** to information about casting, special events, and future programming.
- **YOUR PERSONAL INVITATION TO POST-SHOW PATRON EVENTS** to meet the cast, talk to the artistic leadership, and be a part of the conversation with other Patrons.
- **THE CHANCE TO ATTEND PRIVATE READINGS** and other exclusive special events.
- **A TAX DEDUCTION** for supporting our work.

MCC is a nonprofit, and we count on our Patron community to support the work behind the work. Your tax-deductible contribution helps us...

- **PRODUCE** vital new plays and musicals.
- **DEVELOP** new work by the next generation of theater artists.
- **CHANGE** the lives of nearly 1,200 NYC public high school students each year.



Learn more at patrons@mcctheater.org,
(212) 727-7722 ext. 233

WE SAVED YOU A SEAT

Commemorate
your support of
MCC THEATER
with a seat in the
Newman Mills Theater.

Standard seats begin at \$1,500 per seat.
For more information about seat naming,
please contact Kristina Dizon at
kdizon@mcctheater.org or (212)727-7722 ext. 212

BOARD OF DIRECTORS

Barbara Doran, *Chair*
David Lloyd, *Vice Chair*
Erik Piecuch, *Treasurer*
Kareem Crayton, *Secretary*

Will Cantler
Suman Chakraborty
Robert J. DiDiano
Nicole Eisenberg
Melvin Epstein
Susan Frankel
Cathy Glaser
Jessica Greenwood
Peter Hedges
Claudia Newman Hirsch

Devashish Jain
Judith Light
Marianne Mills
Neil S. Mitchell
Susan Raanan
Cesar Rocha
Jodi Schneider
Bernie Telsey
Lois Weinroth
Blake West

MCC COUNCIL

Peter Dolchin
Iliana Guibert
Deborah Heineman
Jordan Hyatt

Marina Marcoux
Kristine Louis Reynal
Jill Surdyka-Kim

CORPORATE CONTRIBUTORS

Thank you to the generous corporate sponsors that support our work through the annual MISCAST Gala, production support, and corporate matching programs.

& Juliet	Davis Wright Tremaine LLP	The Movado Group
Andrew Lloyd Webber's	Google	Network for Good
Bad Cinderella	Hamilton	The Shubert Organization
Bank of America	The John Gore	United Talent Agency
Bank of America Matching	Organization	The Walt Disney Company
Gifts	Jujamcyn Theaters	WarnerBros. Discovery
Baseline Theatrical	Kimberly Akimbo the	Wells Fargo Advisors
Canyon Partners, LLC	Musical	Wells Fargo Private Bank
City National Bank	Morgan Stanley	WME Agency

Benefits of sponsorship include premium seats at the gala and performances, prominent recognition, and opportunity to create unique employee or client entertaining events. For more information, please contact Vinny Martini at 212-727-7722 ex. 205 or vmartini@mcctheater.org.

FOUNDATION AND GOVERNMENT SUPPORT

\$100,000+

Howard Gilman Foundation
The Shubert Foundation

The Harold & Mimi
Steinberg Charitable Fund
Tiger Baron Foundation, Inc.

The Blanche & Irving Laurie
Foundation

Richenthal Foundation
The Fan Fox & Leslie R.
Samuels Foundation Inc.
Burton A. and Sandra D.
Zipser Foundation

\$50,000+

The Emily Davie & Joseph
S. Kornfeld Foundation
Laurents/Hatcher
Foundation
New York City Department
of Cultural Affairs in
partnership with the City
Council

\$25,000+

Cornelia T. Bailey
Foundation
New York State Council on
the Arts

\$5000+

Axe-Houghton Foundation
Lucille Lortel Foundation

\$10,000+

The Charles & Lucille King
Family Foundation Inc.

\$500+

Actor's Equity Foundation

PRODUCER'S CIRCLE +

Thank you to our generous Producer's Circle level & above supporters who provide major support of our mission to provoke conversation among artists, audiences and students. Members receive benefits that provide exclusive access to the process of making theater at MCC and follow a play's journey from the page to the stage. To learn more, please contact Vinny Martini at 212-727-7722 ex. 233 or vmartini@mcctheater.org.

Brooke Adams & Tony Shalhoub	Jessica & John Greenwood Russel Hamilton	Erik Piecuch & Alex Bong Wright
Suman Chakraborty & Joseph Shrope	Claudia & David Hirsch Devashish Jain & Marc-Antoine Denechaud	Susan Raanan & Robert Fleischer
Kareem Crayton Carol G. Deane	Heni Koenisberg	Jodi & Marc Schneider Marilyn Sobel & Ben Cohen
Robert J. DiDiano Barbara Doran	Gina Maria Leonetti Judith Light	Pam & Larry Tarica Aimee Telsey & Richard Friesner
Nicole & Stephen Eisenberg	David L. Lloyd & Meg Mortimer	Suzanne Telsey & Steven Bennett
Rachel & Melvin Epstein Susan & Ronald Frankel	Marianne & Steven Mills Shelly & Neil S. Mitchell	Lois Weinroth Maureen White
Alice & Bruce Geismar Cathy Glaser & Steve Semlitz	Charles Rosen	

List as of 4/17/23

MCC SUPPORTERS & PATRONS

We are deeply grateful to all of our generous donors and members of our Patron & Friends Programs, who provide vital annual support for our programming on and off stage, our education, and public engagement initiatives, and so much more. For more information on making a gift to MCC or joining the Patron Program, please visit mcctheater.org/support or contact patrons@mcctheater.org or (212) 727-7722 ex 233.

Anonymous (3) David & Charlotte Ackert Cynthia & Taylor Adams Liz Armstrong The Bartos Family Linda & Mel Brosterman Elizabeth Columbo Jennifer Diamond William W. Donnell Amy & Frank Garrison Judith & Douglas Krupp Irwin S. Scherzer Foundation Dr. Robert Press Fritz Reuter Amy & Stephen Sills Martin Small Marilyn Sobel & Ben Cohen Wendy vanden Heuvel Catherine & Jonathan Wachtel	Eisenberg Family Foundation Alfred Giordano Carolyn Gould Iliana Guibert Carol & Steve Gutman Tina Johnson-Marcel Sharon Kirschner Candy & David Kultgen Dr. & Mrs. Allen Levine Leslie Lewit-Milner & Dr. Lawrence Milner Bruce MacAffer Leonard Majzlin Marina & Bill Marcoux Lisa Melmed Ann Miner Darnell-Moser Charitable Fund Abigail Murray & Brad Seiler Andree Olivier Brette Popper & Paul Spraos Sherry Steiner Schwartz Niki & Tony Rabbi Barton & Jane Shallat Lori & David Sherman Henry & Jo Strouss	Jill Surdyka-Kim Mitchell & Laurie Telsey Robin & Leigh Walters
Anonymous (2) Jodi & Craig Balsam Joan Weingarten & Bob Donnalley Gift Fund Deborah & Ronald		Anonymous (11) Zach Aaronson Anne & Andy Abel Kim Adler The Angelson Family Foundation Steven Aripotch & Bruce Jones Janet Benton Jeff Berman Barbara & Paul Bernstein Fran Berrick Monty Blanchard & Leslie Tcheyan Louis Briskman Andrea Brown & Robert Levande Linda & Arthur Carter Patti & Harvey Cohen Paul Colaizzo Erin Collins Andrea Collins Ann E. Darby &

William C. Dudley
Costa & Katherine Darras
Cathy Dault
Mary Davis & MBL
Productions
David P. Draigh
Susan & Todd Eckland
Diana Elghanyan
Sheri Feigen
Judith A. Garson &
Steven N. Rappaport
Yvette A. Geary
Jim & Sue Given
Robyn Goodman &
Anna Louizos
David Govaker
Mark Greenwald
Bradley Hames
Susan T. Harris
Sheila & Mike Hartnett
Thomas Harvey
James Higgins
Rachel Hobart &
Edward Toole
Sophie Hughes
Sally & Robert Huxley
Philip M. Jelley, Jr.
Karen Johnston
The Katz Family
Elysabeth Kleinhans
Deborah Kopinski
Kevin Hogan & Aron Larson
Patty Laxton
Karen Leeds
Jan & Rachel Levine
Steve Levitan
David & Deborah
Livingstone
Lisa Lowe & David Lipsky
Eileen O'Hern Luby
Reeva & Ezra Mager
Eric & Paulette Mann
Judith Manocherian
Nina Matis
Patricia Meadow
Israel Meir & Steve Rivera
Fred Meyer
Deborah & Ivan Moskowitz
Stephen Murphy
Rosemary Newman
Susan & David Noonan
John Orberg
Ellen Ozur & Stuart Brown
Gabrielle & Michael Palitz
Adam Parrish
Matt Pearson - Marron
Foods
Jerilyn & Brian Perman
Kim Powers
Martha J. Radford
Claire Rose & Michael Woloz

Peggy Schmitt
Miriam Schneider
Steven Schreiber &
Amy Lorowitz
Roger Schwed &
Laura Dukess
Mary J. Shannon
Jayne Baron Sherman &
Deby Zum
Barb Shum
Jenni Swan
Judith Sykes & Fred Seid
Lacey & Cheryl Tucker
David Umbach &
David Munro
Kara Unterberg
Tammie Weinfurtner
Patricia & Mark Willis
Mary Beth & Alan Wilmit
Richard Winkler
Billy Wong &
Stephanie Gordon
Roy Youman & Juliet Borja
Rachel Ziemba

Anonymous (6)
Rebecca Anderson
Liana Baker
Roselle Baldwin
Productions
Kendrick Basso
Stacey & Jeff Bernstein
Joseph Biancaniello
Stephen Breimer
Linda S. Burrows
Einat & Ram Burshtine
Hillary Butler
Michael Casey
Debra Cassara
Rebecca J. Cheeks, PhD
Barbara Chubb
Alicia Davis
Quinn Delaney &
Wayne Jordan
Christine Denham
Paul & Jenny Diamond
Rebecca & Martin
Eisenberg
Stephen & Peggy Falanga
Nancy Feldman
Xeni Fragakis
Susan & David Frankel
Daniel Friedman
Andrea Gellert
Lynn George
Thompson Coburn Hahn &
Hessen
Marianne Goodman MD
Allison Hadar
Monica Halpert
Ian Harris & Chloe

Kernaghan
Rachel Hutchinson
Natasha Ippolito
Jeffrey Jackman
Georgann Joseph &
David Marker
Eric R. Kelhoffer, MD
Joanne Kennedy &
Rich Collins
Natarajan Krishnaswami
DeHunte-Lantigua
Household
Lynn & Kevin LaPierre
Leslie Larson & Don Katz
Jon LaPook & Kate Lear
Cathy Ross Lesse
Bob Lipton
Linda MacKinnon
Barbara Manocherian
Kristin McCollum
Mark and Jennifer
Measures
Sheila Nevins
Kathleen O'Grady
Rob Silverstein &
Wanda Olson
Clint Paton
The Peterson Family
Christine M. Millen &
William M. Pinzler
Gale Raspen
Charles Read
Kristine Louis Reynal &
Max Reynal
Jane Rivkin
Donald W. Roeske Jr.
Susanne Rostock
Ellen Saidenberg
Murray & Brenda Schane
Seaview Productions
Ms. Barbara Shulman
Jane Stanicki
The Carse Family
Betty and Jon Tilley
Deborah Wallach
Rachel Weinstein &
Jason Pizer
Amy L. Weltman
Frank Williams &
Keris Salmon
Connie & Art Zuckerman

Anonymous (5)
Andrea Brandon, MD
Steven Byer
Carol Chen
Emily A. Chen
Donna Chirico
Debi Damesek &
Jonathan Forstadt
Bunny Dell

Lennox Thuy Duong
Valerie Feigen &
Steven Eisman
Barbara & Jonathan File
Linda & Mark Florin
Sharon Fulton
Ghilman Ghuman &
Tamara Goldberg
Amy & Abe Glass
Molly K. Heines &
Thomas J. Maloney
Beth Hicks
L. Keith Hughes
Haley Huxley
Tina Johnson-Marcel
Kerrie King
Sidney Kohl Family
Foundation
Kevin Leahy
A A Lobelo
Bob & Alicia Wyckoff
John-John Manlutac
KC Maurer
Peter McKown
Rob Mish
Terry Nardozi
Sophia & Jim Papoulis
Mindi Reich-Shapiro
David Rockwell
Cathy & Michael Rosen
Leonardo Rosner
Neal Rubinstein
Roy Sander
Charlotte Schaefer
Andrea & Mark Seiden
Beth Senturia
Richard & Judith
Silverman
Ted Stephens III
Victor Talbot MD
Nathan K. Turoff
Elliott & Barbara Wagner
Andrew M. Wentink
Connie Wishner
Fred Wistow

Anonymous (9)
Randy Adams
Mr. Oliver Baer
Kris Barefield
Karen D. Baynard
Mark Beatt
Ellen Beck

Stephanie L. Berger
Michael Berman
David Blews
Walter Bobbie
Patrick Briggs
Tom Broecker
Marc Bruni
Theresa Casaletta &
Joseph Borrelli
Jennifer Chambers
Anya Cole
Krystal Coretti
Almitra Corey
Carlito's Way
Dexter David
Maria De Castro
Fleit Detrik
Catherine Djang
Karen Elizaga
Kittie Fahey
Ken & Caryl Field
Peter Filiaci
Jo Ellen Finkel
Elin Flack
Kathleen Flood
Tom Fox
Peter Frey
Jennifer Futch
James Gevlin
Dona Gilbertson
Marcia Goldberg &
Paul Garrity
Rich and Jill Granoff
Andy Griswold
Jack Grossbart
Marc Haber
Robert J. Hall
Anna Harb
Jonathan Harrison
Kris Heinzelman
Debbie Higgins
Barbara Janowitz &
Peter Entin
Jeff and Deirdre Johnson
Bryant Johnston
Paul Kalish
Susan Klebanoff
The Klena Family
Zachary Kline
Susan Kroll
John Lee
Frank & Amy Linde
Cary Lichtenberg

Kerrie MacPherson
Jody Mansbach
Julianna Margulies
Robert & Jean Markley
Caroline Marshall
Heather McAdam
Sarah McGill
Grete Meilman
Kelly & Blake Miller
Jeffrey Morgan
Larry Moss
Dora Naughton
Devdutt V. & Asha D. Nayak
Nathan Nelson
Alison & Dimitris
Nikitopoulos
Sarah O'Neill
Jade Payton
Barbara Pilnick
Pamela Pink
Barbara Pollard
Heather Porter
Ramona & Naz Quadri
Judy Racoosin
Katherine Rausch
In Memory of Ronald O.
Jacobson
Jackie Rolliardi
Sharyn Rosenblum
Howard & Joan Rothman
Russell Roybal
William Rubenstein
Paula E Sandoval
Trish Santini
Nina Santisi
Barbara Schnitzler
Darrel Schoeling &
Jeff Corbin
Tysha Scott, In Memory of
Phillip R. Scott Esq.
Sarajane Sein
Ainka Shackelford
K Dawn & Max Shemesh
Eileen Sherman
Ken Staffey
Lee Stille
Jenny Thompson
Maria Torres
Emanuel Tsourounis II
Tamara White
Carmen Rita Wong
Suzanne Yadav

MISCAST SUPPORT

This year, MCC was thrilled to return to the Hammerstein Ballroom for MISCAST23 and broadcast the show to an international audience! We're so grateful to all of our donors who helped make this event a worldwide phenomenon, and look forward to celebrating MISCAST24 in Spring 2024.

VICE CHAIRS

Ronald & Susan Frankel

DIAMOND

Canyon Partners, LLC
The Julis Romo Rabinowitz
Family

PLATINUM

Robert DiDiano
Claudia & David Hirsch
Meg Mortimer &
David L. Lloyd Jr.
Tiger Baron Foundation

GOLD

Nicole & Stephen
Eisenberg
Hamilton
Neil & Shelly Mitchell
Susan Raanan &
Robert Fleischer
Jodi & Marc Schneider
The Shubert Organization
Amy & Stephen Sills
Marilyn Sobel & Ben Cohen
Warner Bros. Discovery /
East New York
Wells Fargo Private Bank

BRONZE

Andrew Lloyd Webber's
Bad Cinderella
Baseline Theatrical
Suman Chakraborty &
Joseph Shrope
City National Bank
Barbara Doran
Susan Edelstein
Rachel & Melvin Epstein
Cathy Glaser &
Steve Semlitz
Jessica & John Greenwood
Matthew Hui
Devashish Jain &
Marc-Antoine Denechaud
Kimberly Akimbo The
Musical
Gina Maria Leonetti
Angie Lutz
Julianna Margulies,

Keith Lieberthal &
Marc Lowenberg
Morgan Stanley
Erik Piecuch &
Alex Bong Wright
Dean Pitchford &
Michael Mealiffe
Alisa Savitz, Paula Katz, &
Friends
Lois Weinroth
Warner Bros. Discovery /
The Gilded Age
Wells Fargo Advisors

PRODUCER

Iris Abrons
Lewis Cole
Judith Garson &
Steven Rappaport
Gassin Family Foundation
The Michaels Family
Foundation
Print Positive
The Robert W. Wilson
Charitable Trust
Ted Stephens III,
The Numad Group
Lia Vollack
Barry Weissler
Elizabeth & Ken Whitney

PLAYWRIGHT

Dianna DiMenna
Joanne & Ellen Flanagan
Chelsea Kellogg
Susan Lichenstein &
John Rokacz
Barbara Manocherian
The Movado Group
Foundation
Fiona Rudin
Jac Scheiner
Carol & Joel Thea
Jonn Wasser

DIRECTOR

Ole Andreassen
Lynn Angelson
Emily Baugher
David Boccuzzi
Mel & Linda Brosterman

Javan Bunch & G-III
Apparel
Scott Burns
Linda & Arthur Carter
Mary Cirillo-Goldberg
Graham Coleman
David Crane & Jeffrey Klarik
Kareem Crayton
Creative Artists Agency
Kelly Fowler Hunter
Jill Furman
Roy Furman
Amy & Frank Garrison
Michael Greif
Iliana Guibert
Glenn Gunderson
Peter Hedges &
Susan Bruce Hedges
John Homan
The John Gore
Organization
Deborah & Mark Kopinski
Linda F. Lynn
Peter McKown
Jessica Mitchell
Jennifer Namoff
Michael Neuwirth &
Lynda Greenblatt
Greg Nobile
Naked Nutrition
Paige Price
Diarmuid Quinn
Fernando & Cynthia Rivera
Joseph Rokacz &
Lawrence Gordon
Susan Rosenberg &
Peter Braverman
Debbie Rovner
Neal Rubinstein
Laura Santisi &
Richard Johnson
Steve Shane
Barbara Shulman
Helene Stein
Jenni Swan
Frederick Taylor
W. Scott Thomas
United Talent Agency
WME Agency

THE CAMPAIGN FOR MCC THEATER

MCC THEATER is proud to thank everyone who has supported the Campaign for MCC THEATER. You helped make our dream of a home of our own a reality. Our new home allows us to deepen our mission and encourage greater collaboration amongst all of our artists, students, and audiences.

Special thanks to The Office of the Mayor of New York City, Eric Adams; The New York City Department of Cultural Affairs, Commissioner Laurie Cumbo; The New York City Council, Speaker Adrienne Adams; and the Office of Manhattan Borough President, President Mark D. Levine, for their dedication to the arts and their foundational support for this project.

Ruth & Harold Newman†
Julie & Marc Platt
The Robert W. Wilson Charitable Trust

Susan & Ronald Frankel Cathy Glaser & Steve Semlitz Howard Gilman Foundation Marianne & Steven Mills Steve Richardson & Kirk Rubi Ms. Barbara Shulman Amy & Stephen Sills Elizabeth & Ken Whitney	David L. Lloyd, Jr. & Meg Mortimer Reeva & Ezra Mager Shelly & Neil Mitchell Erik Piecuch & Alex Bong Wright Marilyn Sobel & Ben Cohen Sheila Steinberg Pam & Larry Tarica Lois Weinroth Janine & Jonathan Whitney	Stephanie & Ron Kramer Lorie Cowen Levy & Charles J. Levy, Jr. Dr. & Mrs. Jerome & Elizabeth Levy John Lewin & Margie Becker-Lewin Virginia & Robert LuPone† Bruce MacAffer Marina & Bill Marcoux William Megevick Robert & Fulvia McCrie William Megevick & George Calderaro Leslie Lewit-Milner & son, Jacob Lewit Dahlia Neiss & Family Anh-Tuyet Nguyen† & Robert Pollock Brette Popper & Paul Spraos Dr. Robert Press Kristine Louis Reynal & Max Reynal Roselle Baldwin Productions Sherry Schwartz Niki & Tony Ted Stephens III Jenni Swan Bernard Telsey & Anne Marino Suzanne & Aimee Telsey Ellie & Dan Fund Joan Weingarten & Bob Donnalley Patty & Mark Willis
The Bonnie Cashin Foundation Dr. Gail Furman† Roy Furman, Jill Furman and Stephanie Furman Darrow The Garson Rappaport Family The Blanche & Irving Laurie Foundation Gina Maria Leonetti Susan Raanan & Robert Fleischer Eric Rosedale Playwriting Fund Rosemarie & Lou Salvatore†	Lewis G. Cole Ann Dickinson & Richard Purington Liz Armstrong Maureen & Bill Barton Brenda & David Bass Karen Kayser Benson† Linda & Mel Brosterman Jan & Will Cantler Elizabeth Columbo Katherine & Costa Darras Brian Davidson & Michael Schultz Carol G. Deane Jody Falco & Jeffrey Steinman Cynthia & Herbert Fields Amy & Frank Garrison Mary Cirillo-Goldberg & Jay Goldberg† Peter Hedges & Susan Bruce Hedges Doug Hughes Leslie Larson & Don Katz	
Marjorie & Fredric Altschuler Javan Thomas Bunch Burnt Umber Productions Rachel & Melvin Epstein Emma A. Sheafer Charitable Trust Lori & Edward Forstein Jerry Frankel † Dede Harris Claudia & David Hirsch		

List as of 4/17/23

The funds listed below provide ongoing support to several of MCC's key initiatives.

THE GARY PLATT INITIATIVE FOR NEW MUSICALS supports artistic development and production of new musicals.

STEVE RICHARDSON AND KIRK RUBI COLLEGE MENTORSHIP FUND supports MCC Youth Company college and career preparation activities.

ERIC ROSEDALE PLAYWRITING FUND supports the annual FreshPlay for the MCC Youth Company.

THE R&S SHULMAN FUND supports artistic development and production of new plays, with a focus on work by African American Playwrights

ARTIST COUNCIL

MCC THEATER wishes to acknowledge Artists and Industry Leaders who have generously donated their time and talent to support MCC THEATER's mission through our Education & Outreach programs, annual MISCAST Gala, and Online Auction.

Ramón Real Vargas Alanis	Halley Feiffer	Ingrid Michaelson
ChiChi Anyanwu	Beanie Feldstein	Lin-Manuel Miranda
Annaleigh Ashford	Dominique Fishback	The National Black Theater
Nissy Aya	Lenni Yesner Foreman	Ana Nogueira
Melissa Barrera	Jennifer Garner	Kelli O'Hara
McKinley Belcher III	Paige Gilbert	Leslie Odom Jr.
The Billie Holiday Theater	Ross Golan	Al Parker
Jocelyn Bioh	Renee Elise Goldsberry	Annie Paul
Nick Blaemire	Leslie Grace	Piper Perabo
Brooklyn Academy of Music	Heather Headley	Dylan Pickus
Norbert Leo Butz	Lucas Hedges	Billy Porter
Christian Cacigal	Joshua Henry	Isaac Powell
Sandra Caldwell	Andrea Hiebler	Travis Raeburn
Nicole Capatasto	Cheyenne Jackson	Amrita Ramanan
Juan Castano	Evan Jonigkeit	Lauren Ridloff
Kristian Charbonier	Jai'len Josey	Nicolette Robinson
Sarah Chavez	Alex Lacamoire	Susan Rudick
Kenneth Cole	LaChanze	Christina Russo
Julissa Contreras	Cedric Lamar	Thomas Sadoski
Kareem Crayton	Robert Leng	Phillipa Soo
Gavin Creel	Victoria Libertore	Gabriella Steinberg
Trip Cullman	Judith Light	Marisa Tomei
Hugh Dancy	Eric Lockley	Kelly Marie Tran
Robin De Jesus	Donja R. Love	Aaron Tveit
Developing Artists	Zosia Mamet	Channie Waites
Edison Ventura Mata Diaz	Julianna Margulies	Adrienne Warren
Ivon Edebiri	Jose Solis Mayen	Alice Whitley
Raul Esparza	Rob McClure	Patrick Wilson
Robert Fairchild	Idina Menzel	The Women's Project
	Laurie Metcalf	Kit Yan

THE GARY PLATT INITIATIVE FOR NEW MUSICALS

The GARY PLATT INITIATIVE FOR NEW MUSICALS supports the costs of developmental readings, workshops, and new musical productions at MCC, with the goal of inspiring new voices and adding to the American musical theater canon.

The Initiative was formed in 2019 by Julie and Marc Platt and their family to honor the memory of their uncle and great-uncle, Gary, whose lifelong love of musical theater instilled in them a passion for this unique storytelling art form.



the CAST of ONLY GOLD / photo by DANIEL J. VASQUEZ

To learn more about THE GARY PLATT MUSICAL THEATER INITIATIVE, please contact Anne Myers at (212) 727-7722 ext. 236 or amyers@mcctheater.org.

NEXT UP IN OUR 2023/24 SEASON

world premiere musical

THE CONNECTOR



JAN 12–FEB 18

music & lyrics by **JASON ROBERT BROWN**

book by **JONATHAN MARC SHERMAN**

conceived & directed by **DAISY PRINCE**

choreographed by **KARLA PUNO GARCIA**

From Tony® Award-winning composer JASON ROBERT BROWN (PARADE) comes a timely new musical about two talented young journalists on increasingly diverging paths. Set in the late 1990s amid a rapidly changing media landscape we meet a fast-rising journalist, Ethan Dobson, and an assistant copy editor, Robin Martinez, at the revered magazine *The Connector*. In a world that values the next big sensation, Ethan's writing prowess and ambition force him to confront how far he'll go for the ultimate scoop and Robin to consider how far she'll go to stop him.

TIX ON SALE NOW!

THIS SPRING AT MCC THEATER

APR 26--JUN 2

new rock musical

THE LONELY FEW

music & lyrics by **ZOE SARNAK**

book by **RACHEL BONDS**

directed by **TRIP CULLMAN &
ELLENORE SCOTT**

Lila and her band, The Lonely Few, have a standing gig at Paul's Juke Joint in their small Kentucky town. When an established musician, Amy, gives them a chance to join her on tour, they take it. Love blossoms between Lila and Amy on the road, but can it endure? THE LONELY FEW is a New York premiere rock musical about the forces that launch us from home and the gravitational pull that can bring us back.

TIX ON SALE MAR 13

Why become a **FLEX TIX** Subscriber?

GREAT SEATS

PRIORITY BOOKING gets you advance access to tix—before the general public.

FLEXIBILITY

Choose the performances you want to see when you want to see them with **NO-FEE TIX EXCHANGES**.

SAVE MONEY

Up to 50% off full-price tix.

BRING FRIENDS

Discounts on your guest tickets.

Save now, decide later!



FLEX TIX PACKAGE

PACKAGES start at \$250*

- Valid for all performances
- Can use up to 4 tix per production
- Book tix before the general public

Tickets are for Preferred Seats. Premium Seats are not included in this package.

**A one-time \$12 per package handling fee will be included.*

Call (646) 506-9393 or visit MCCTHEATER.ORG to save.



**MCC
THEATER**