

brand new comedy

SHIT. MEET. FAN.



 **MCC
THEATER**

Based on the Lotus
Production and Medusa
Film PERFECT STRANGERS
by PAOLO GENOVESE



MCC THEATER

BERNIE TELSEY and **WILL CANTLER** / artistic directors
BLAKE WEST / executive director

present

SHIT.MEET.FAN.

written & directed by **ROBERT O'HARA**

**MARK DANCEWICZ, GARRET DILLAHUNT, LENNOX T. DUONG,
GENEVIEVE HANNELIUS, NEIL PATRICK HARRIS, JANE KRAKOWSKI,
DELANCE MINEFEE, DEBRA MESSING, MICHAEL OBERHOLTZER,
JESSE PENNINGTON, OLIVIA REIS, JESSICA RUSH,
TRAMELL TILLMAN, CONSTANCE WU**

scenic design

**CLINT
RAMOS**

costume design

**SARAFINA
BUSH**

lighting design

**ALEX
JAINCHILL**

sound design

**PALMER
HEFFERAN**

hair
design

**COOKIE
JORDAN**

props supervisor

**JOSHUA
LARRINAGA-
YOCOM**

intimacy
coordinator

**ANN
JAMES**

DEI consultant

**NICOLE JOHNSON /
HARRIET TUBMAN EFFECT**

casting

**THE TELSEY
OFFICE**

production stage
manager

**IMANI
CHAMPION**

general
manager

**BETH
DEMBROW**

director of
finance

**LINDA
WONG**

director of public
engagement & education

**MEGGAN
GOMEZ**

director of marketing
& communications

**ABIGAIL
LANGSTED**

director of production
& facilities

**STEVE
ROSENBERG**

manager of artistic
development

**ELISSA
HUANG**

manager of musical
programming &
development

**SCOTT
GALINA**

publicity

**PRINT SHOP PR /
MATT ROSS,
NICOLE CAPATASTO,
LIZ LOMBARDI,
GRACE WALKER**

Presented in the **NEWMAN MILLS THEATER**

SHIT. MEET. FAN. is produced in association with Eva Price, Simon Horsman, and Gianni Nunnari.

This production is supported by the R&S Shulman Fund at MCC Theater. The R&S Shulman Fund supports artistic development and production of new plays, well as development and engagement activities, with a focus on work by African American playwrights.

This production is supported in part by Jayne Baron Sherman.

CAST

Brett **GARRET DILLAHUNT**
Sam **GENEVIEVE HANNELIUS**
Rodger **NEIL PATRICK HARRIS**
Eve **JANE KRAKOWSKI**
Frank..... **MICHAEL OBERHOLTZER**
Claire **DEBRA MESSING**
Logan **TRAMELL TILLMAN**
Hannah **CONSTANCE WU**

UNDERSTUDIES:

For Brett, Frank—**MARK DANCEWICZ**; for
Hannah—**LENNOX T. DUONG**; for Logan—
DELANCE MINEFEE; for Brett, Rodger, Frank—
JESSE PENNINGTON; for Sam—**OLIVIA REIS**;
for Eve, Claire—**JESSICA RUSH**

Production Stage Manager **IMANI CHAMPION**
Assistant Stage Manager..... **JOHN CARPENTIER**

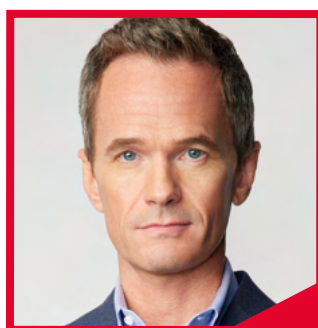
TIME & PLACE: Dumbo, NYC



GARRET DILLAHUNT



GENEVIEVE HANNELIUS



NEIL PATRICK HARRIS



JANE KRAKOWSKI



DEBRA MESSING



MICHAEL OBERHOLTZER



TRAMELL TILLMAN



CONSTANCE WU



MARK DANCEWICZ



DELANCE MINEFEE



LENNOX T. DUONG



JESSE PENNINGTON



OLIVIA REIS



JESSICA RUSH

WHO'S WHO

ROBERT O'HARA (Playwright & Director) is the Tony-Nominated Director of SLAVE PLAY and is currently working on several Film, Television, and Broadway projects. He's a two-time Obie Award Winner and two-time NAACP Award Winner whose work has been seen around the country.

GARRET DILLAHUNT (Brett) Broadway: INHERIT THE WIND; THE FATHER. Representative roles Off-Broadway: MAD FOREST (NYTW and MTC); A PERFECT GANESH (MTC); THINGS OF DRY HOURS (NYTW); THE BEGINNING OF AUGUST (Atlantic); TRIUMPH OF LOVE (CSC Rep); 900 ONEONTA (Circle Rep); BOOTH (York) among others. Other representative roles: Prior Walter in ANGELS IN AMERICA Pts I and II and THE INVENTION OF LOVE (both at A.C.T.); SIDE MAN (Steppenwolf); GLASS MENAGERIE (Cincinnati Playhouse); SWEET BIRD OF YOUTH, CAT ON A HOT TIN ROOF, MILK TRAIN DOESN'T STOP HERE ANYMORE and PRESENT LAUGHTER (all at Williamstown); NIGHT OF THE IGUANA (BTF); EYE OF GOD (Seattle Rep) and CONVICTION opposite Sarah Paulson (Bay St. Theatre). Upcoming onscreen projects include the features "THE HUNTSMAN" and "SARAH'S OIL" with "HIGH POTENTIAL" (ABC) and "HYSTERIA" (Peacock) on the small screen. Other favorite films include THE DEAD DON'T HURT; RED RIGHT HAND; A MILLION MILES AWAY; WHERE THE CRAWDADS SING; AMBULANCE; ARMY OF THE DEAD; WIDOWS; 12 YEARS A SLAVE; WHEELMAN; WINTER'S BONE (Spirit Award); ANY DAY NOW; LOOPER; OLIVER SHERMAN; THE ROAD; LAST HOUSE ON THE LEFT; ASSASSINATION OF JESSE JAMES etc; NO COUNTRY FOR OLD MEN (Oscar and SAG Awards); HOUSTON (best actor Fantosporto Int'l Film Festival) and THE BELIEVER (Grand Jury Prize Sundance), to name a few. On television Garret may be best known for playing three different roles on HBO's acclaimed series DEADWOOD and five seasons as Burt Chance on RAISING HOPE and three seasons of THE MINDY PROJECT. He also produced and starred in the comedy series SPRUNG for Amazon; played the beloved John Dorie on FEAR THE WALKING DEAD as well as roles on HIGHTOWN; DEAD TO ME; GHOSTS OF BEIRUT; MONSTERS OF GOD; THE GUEST BOOK; HAND OF GOD; JUSTIFIED; JOHNFROM CINCINNATI; TERMINATOR: THE SARAH CONNOR CHRONICLES; BURN NOTICE and THE GIFTED, to name a few. Garret is a graduate of NYU's Graduate Acting program and is thrilled to be making his MCC debut.

GENEVIEVE HANNELIUS (Sam) A Sarah Lawrence College graduate currently residing in New York City, Genevieve Hannelius has been acting since the age of eight-years-old. She was most recently seen starring in the Netflix original film ALONG FOR THE RIDE and the Netflix original series "AMERICAN VANDAL". She is perhaps best known for starring on the three-time Emmy-nominated Disney Channel series, "DOG WITH A BLOG". Credits include the critically-acclaimed reboot of the landmark TV mini-series "ROOTS", the independent thriller DAY 13, and American High's comedy feature SID IS DEAD.

WHO'S WHO

NEIL PATRICK HARRIS (Rodger) is a multi-hyphenate and a veteran of the theatre. Harris originated the role Hedwig in the Tony Award-winning Broadway production of HEDWIG AND THE ANGRY INCH (Tony, Drama League and Drama Desk Awards). His additional stage work includes PETER PAN GOES WRONG (Barrymore Theatre), INTO THE WOODS (NY City Center), ASSASSINS (Studio 54), PROOF (Walter Kerr Theatre), CABARET (Studio 54), COMPANY (New York Philharmonic), ALL MY SONS (Geffen Theater), THE PARIS LETTER (Kirk Douglas Theater), SWEENEY TODD (NY Phil, San Francisco Symphony Orchestra), ROMEO AND JULIET (Old Globe Theater), RENT (Los Angeles/2nd National Tour), LUCK, PLUCK, VIRTUE (Atlantic Theater Co.) and TICK, TICK...BOOM! (Menier Chocolate Factory). Behind the curtain, Harris made his musical directorial debut with the Hollywood Bowl's staging of Jonathan Larson's RENT. Additionally, Harris has directed NOTHING TO HIDE (Pershing Square Signature Center & Geffen Theater), THE EXPERT AT THE CARD TABLE (Edinburgh Fringe Festival & Broad Stage Theater) and most recently TICK, TICK,...BOOM! at the Kennedy Center in DC.

In television, Harris starred as Barney Stinson in "HOW I MET YOUR MOTHER" for CBS, and Count Olaf in the Netflix adaptation of "A SERIES OF UNFORTUNATE EVENTS." Harris is a five-time Emmy Award-winner, with notable guest appearances on "AMERICAN HORROR STORY," "GLEE," and "DRS. HORRIBLE AND WHO." He's also hosted the Tony Awards more than thrice. Some of Neil's film work includes THE MUPPETS, the HAROLD AND KUMAR franchise, UNDERCOVER BROTHER, A MILLION WAYS TO DIE IN THE WEST, GONE GIRL, and THE MATRIX RESURRECTIONS. Ever expanding his scope of work, Neil is also a New York Times bestselling author, entrepreneur, and father to two incredible humans and four dogs. Special thanks to his awesome husband David Burtka, for being chill while Neil fights with his wife.

JANE KRAKOWSKI (Eve) is an award-winning triple threat actress most commonly known for her role as Jenna Maroney on NBC's Emmy Award-winning "30 ROCK." She was honored with four Emmy nominations for her work on the show, as well as a collective Screen Actors Guild Award for Outstanding Performance by an Ensemble in a Comedy Series. She was most recently seen as Bobbie Flanagan in Apple's musical series "SCHMICHAGO," the second season of "SCHMIGADOON!" Jane is the host of FOX's reboot of the classic game show "NAME THAT TUNE." Other iconic television performances include her Golden Globe-nominated portrayal of Elaine Vassal on the multi-Award-winning "ALLY MCBEAL," her Critics' Choice winning, Emmy nominated Jacqueline White in Netflix's "UNBREAKABLE KIMMY SCHMIDT," Mrs. Dickinson in Apple's hit series "DICKINSON," Miss Shields in FOX's A CHRISTMAS STORY LIVE film as well as guest stars on "MODERN FAMILY," "CURB YOUR ENTHUSIASM," "AT HOME WITH AMY SEDARIS," "THE SIMPSONS," "AMERICAN DAD," "DRUNK HISTORY," "YOUNGER" and even "SESAME STREET." Jane starred on Broadway in the Roundabout Theater Company's production of SHE LOVES ME (Outer Critics Circle Award, Astaire Award, Drama Desk Award and Tony nomination). She earned a Tony Award, a Drama Desk

WHO'S WHO

Award and an Outer Critics Circle Award for her portrayal of Carla in the Broadway musical NINE and a Tony nomination for GRAND HOTEL. Other Broadway credits include COMPANY, ONCE UPON A MATTRESS, TARTUFFE, and STARLIGHT EXPRESS. She won an Olivier Award while starring in GUYS AND DOLLS in London's West End and starred in the Encores! revival of DAMN YANKEES as well as Mrs. Potts in the Hollywood Bowl's production of BEAUTY AND THE BEAST. Krakowski released her solo debut album, "The Laziest Gal in Town," a CD recording captured during her cabaret nightclub debut at the Park Avenue hotspot, Feinstein's at Loews Regency and performed a one-woman cabaret act to a sold-out crowd at NYC's legendary Town Hall Theater.

DEBRA MESSING (Claire) is an Emmy Award-winning Actress, Producer, and Human Rights Activist.

She is best known for her Emmy & SAG Award-winning role as Grace Adler on NBC's Emmy Award-winning comedy series "WILL & GRACE," and starred in "THE MYSTERIES OF LAURA," and "SMASH," both on NBC. Notable film credits include the award-winning SEARCHING, ALONG CAME POLLY, THE WEDDING DATE, NOTHING LIKE THE HOLIDAYS, THE WOMEN, HOLLYWOOD ENDING, THE MOTHMAN PROPHECIES, and THE DARK DIVIDE. Messing has been honored with a Star on the Hollywood Walk of Fame, Women In Film's Lucy Award, The Gracie Allen Award, American Comedy Award, among 50 more nominations.

Messing was last seen on Broadway in 2022 to star in Noah Haidle's new play, "BIRTHDAY CANDLES." She also starred in John Patrick Shanley's Tony Award-nominated, OUTSIDE MULLINGAR. Off-Broadway credits include FOUR DOGS AND A BONE by John Patrick Shanley, COLECTED STORIES by Donald Marguiles, and THE NAKED TRUTH by Paul Rudnick.

Most recently, Messing filmed the Warner Brothers mob drama, "ALTO KNIGHTS," opposite Robert De Niro, directed by Barry Levinson. Debra is a proud graduate of NYU's graduate acting program (MFA).

MICHAEL OBERHOLTZER (Frank) was nominated for a Tony Award[®] for his performance in the recent Broadway revival of TAKE ME OUT. His other appearances on and off Broadway include HAND TO GOD (MCC), THE BABYLON LINE (Lincoln Center Theater), and THE TALLS (Second Stage). On television, he is best known for his recurring roles on the series SNEAKY PETE and GOOD GIRLS REVOLT. He has also been seen on THE AMERICANS, BLUE BLOODS, BULL, THE GOOD FIGHT, and LAW AND ORDER. His film credits include DELIVERY MAN, HAIR BRAINED, HITS, CAT SHOOT KILL, TROUBLE, STARING AT THE SUN, AARDVARK, and SOUTH MOUNTAIN.

TRAMELL TILLMAN (Logan) is a SAG and Independent Spirit award nominee for his role of Milchick on the Apple TV+ series SEVERANCE. His TV credits include Marti Noxon's AMC series "DIETLAND", "GODFATHER OF HARLEM" starring Forest Whitaker, and "HUNTERS," the Amazon series starring Al Pacino and Logan Lerman. His film credits

WHO'S WHO

include the HBO Max film SWEETHEARTS starring Kiernan Shipka and Nico Hiraga, BARRON'S COVE starring Garrett Hedlund, Brittany Snow and Hamish Linklater, as well as MISSION IMPOSSIBLE 8 starring Tom Cruise.

Tramell was on stage at the Goodman Theater opposite Sean Hayes in GOOD NIGHT, OSCAR. He originated the role of ALVIN and continued to serve as creative consultant for the Broadway production. He made his Broadway debut in THE GREAT SOCIETY (Vivian Beaumont) starring Brian Cox. Before that, he was in CARMEN JONES (CSC) starring Anika Noni Rose. While a residing member of the Oregon Shakespeare Festival, he helped launch the Tony nominated play, SWEAT, by Lynn Nottage. He continued performing his lead role at the Arena Stage in Washington DC. He currently resides in New York City.

CONSTANCE WU (Hannah) FILM: THE FRIEND alongside Naomi Watts and Bill Murray, LYLE LYLE CROCODILE with Javier Bardem, HUSTLERS opposite Jennifer Lopez, and CRAZY RICH ASIANS (Golden Globe® nomination for Best Actress in a Motion Picture in a Musical or Comedy, Critics Choice® nomination for Best Actress in a Comedy.) CRAZY RICH ASIANS also made Hollywood history as the first studio movie in over 25 years to star an Asian American woman. TELEVISION: "THE TERMINAL LIST" (Amazon), "SOLOS" (Amazon) and "FRESH OFF THE BOAT" on ABC (Critics' Choice Nomination - Best Actress in a Comedy Series). Recent theater includes: LITTLE SHOP OF HORRORS (Off-Broadway) and 2:22 A GHOST STORY (Center Theater Group). Constance also penned a book of personal essays titled "MAKING A SCENE" published by Scribner. BFA in Acting from SUNY Purchase Conservatory of Theater Arts. Many thanks to Larry, Bonnie, Kevin, Hylda, Will, Bernie and everyone at MCC for this wonderful opportunity.

MARK DANCEWICZ (u/s Brett, Frank) was recently seen in the newly released film, THE INSTIGATORS, starring Matt Damon and Casey Affleck and as a Guest Star on ABC's new hit show HIGH POTENTIAL with Kaitlin Olson. Additional TV credits include BLUE BLOODS, FBI, HOMICIDE CITY and THE EQUALIZER. Other Film Credits include WITNESSES and the upcoming Action Thriller, AFTERMATH, directed by Patrick Lussier and starring Dylan Sprouse and Mason Gooding. Mark is thrilled to make his MCC debut and return to the stage, after the European Tour of THE WHO'S TOMMY and closing the 7-year run on Broadway in MAMMA MIA. A graduate of Emerson College and a Boston native, Mark would like to thank this family, friends and agents at Take 3 Talent for their endless support. @markdancewicz

LENNOX T. DUONG (u/s Hannah) is a first generation Vietnamese-American born and raised in Fresno, CA. She recently played Sean in the new musical HELLO KITTY MUST DIE at the Edinburgh Fringe Festival. Her past roles include Imogen in CYMBELINE, Masha in THREE SISTERS, Amina in DANCE NATION, and Mulan in MULAN AND THE BATTLE ON BLACK MOUNTAIN. Duong recently workshopped new plays with Williamstown Theater Festival, La Jolla Theater Company, SOHO Rep, the Song Collective, and NAATCO. She is immensely grateful for

WHO'S WHO

her family, friends, and her incredible team at Stewart Talent and Ellipsis Entertainment Group. Training: The Juilliard School. @lennox.t.duong

DELANCE MINEFEE (u/s Logan) is originally from Arkansas, where he served as the Assistant Director of LIVING HISTORY for the Historic Arkansas Museum and co-produces the annual 24Hour Plays: LITTLE ROCK. Notable Theatre credits include: TINY BEAUTIFUL THINGS (The Public Theater), THE CHRISTIANS (Syracuse Stage/The Wilma Theater), LIGHTS RISE ON GRACE (Woolly Mammoth), DONNIE DARKO (American Repertory Theatre), A-TRAIN PLAYS (Neighborhood Playhouse), and WALKEN ON SUNSHINE (NY Fringe). TV credits include: "LAW & ORDER SVU"(NBC), "POWER BOOK 3: RAISING KANAN" (Starz), "BLACKLIST"(NBC), "BLUE BLOODS" (CBS), "DASH & LILY" (Netflix), WHITE HOUSE PLUMBERS (HBO), "GODFATHER OF HARLEM" (MGM), "HUNTERS" (Amazon), "NEW AMSTERDAM" (NBC), "BLINDSPOT" (NBC), "SWEET BITTER"(Starz), "THE SINNER" (USA), "LUKE CAGE"(Netflix), "SHADES OF BLUE" (NBC), and "FRANK & LAMAR" (IFC Comedy Crib). He was awarded the 2016 Syracuse Area Live Theater(SALT) Award for Best Supporting Actor and holds a BA in Theater Arts from Henderson State University and an MFA in Acting from ART/MXAT Institute @ Harvard University. He is a proud member of AEA and SAG/Aftra. www.DeLance.net

JESSE PENNINGTON (u/s Brett, Rodger, Frank) is an Obie Award-winning actor, most recently seen as Karl Lindner in Robert O'Hara's production of A RAISIN IN THE SUN at the Public, and before that he was seen as Astrov in Richard Nelson's production of UNCLE VANYA at the Hunter Theater Project. Other Off-Broadway: BOOTYCANDY (Obie Award, Lucille Lortel nomination), FRANNY'S WAY, RODNEY'S WIFE (all at Playwrights Horizons); THE MOUNTAINS LOOK DIFFERENT (Mint); THE WINTER'S TALE (NYSF); A GENERAL FROM AMERICA (TFANA); THE FALSE SERVANT (CSC); A PLACE AT THE TABLE (MCC). European Tour: THE APPLE FAMILY PLAYS (Berlin, Brighton, Vienna). Regional credits include: Old Globe, Guthrie, Huntington, A.C.T., Alley, Geffen Playhouse, Williamstown, New York Stage and Film, Actors Theater of Louisville, People's Light. Film: WHEN ZACHARY BEAVER CAME TO TOWN, AMERICAN GUN. TV: "UNCLE VANYA." Training: NYU Graduate School of Acting.

OLIVIA REIS (u/s Sam) can currently be seen on Hulu's mystery/comedy series "ONLY MURDERS IN THE BUILDING" starring Steve Martin, Martin Short and Selena Gomez. Olivia's training in classical theater has included the Royal Academy of Dramatic Art, The Public, Atlantic Theater Company, and American Shakespeare Center. She quickly made her mark on stage in New York and was honored with the Matador Award for Promise in Classical Theater following her performance in Red Bull Theater's CORIOLANUS. Olivia recently graduated from Northwestern University with a B.A. in Theater and English.

JESSICA RUSH (u/s Eve, Claire) is a Joseph Jefferson award winning actor most recently seen on the NY stage originating the role

WHO'S WHO

of Rhonda Graam in *TINA: THE TINA TURNER MUSICAL* on Broadway. Other Broadway credits include *DEAR EVAN HANSEN* (Cynthia/Heidi standby), *SUMMER* (Joyce Bogart), *GYPSY* with Patti LuPone (Louise standby), *GUYS & DOLLS*, and *JERSEY BOYS*, where she had the privilege of being the longest running Lorraine in the show's history. Jessica has starred in numerous productions around the country including *MAMMA MIA*, *BEAUTIFUL: THE CAROLE KING MUSICAL*, *DIRTY ROTTEN SCOUNDRELS*, *MISS SAIGON*, and playing the title role in *CINDERELLA* opposite Eartha Kitt. As a triple-threat performer she has appeared on television in "BILLIONS," "WHITE COLLAR," "THEN WE GOT HELP" (Indie Series winner), "FOR REAL," and three Tony Awards telecasts. A multi-hyphenate, passionate advocate for artist mothers, Ms. Rush is the founder of the support group Broadway Baby Mamas, co-host of the top rated podcast "Mamas Talkin' Loud" (available everywhere) and creator of the bespoke bracelet business Ivy & Clarke. @jessicarush

PAOLO GENOVESE (Co-Author & Director of *PERFECT STRANGERS*): Born in Rome in 1966, Paolo graduated with a degree in Business Economics. Upon graduating, he began to work in advertising at McCann Erickson, making commercials, which won him awards at various national and international festivals.

In 2001, Genovese made his feature film debut when he co-wrote and directed *INCANTESIMO NAPOLETANO*, winner of a Globo d'Oro for Best Film (Italian Golden Globe). From 2010 onwards, Genovese began writing and directed numerous successful comedies, including *LA BANDA DEI BABBI NATALE* (2010), an "Italian masterpiece" which brought in more than € 23M in revenue at the Italian box office, and *IMMATURI* (2011) and its sequel, combined earning over € 30m in Italy, as well as garnering both David di Donatello and Nastri d'Argentino nominations.

PERFECT STRANGERS (2016), grossed over \$31 M worldwide as well as winning a host of awards. The film won the David di Donatello for Best Film, and Best Screenplay, the Tribeca Film Festival Award for Best Screenplay for an International Narrative Feature, the Nastro d'Oro (Silver Ribbon) for Best Comedy, and the Ciak d'Oro (Golden Clapperboard) for Best Film and Best Screenplay. *PERFECT STRANGERS* holds the record as the most remade film in cinema history to this day!

CLINT RAMOS (Scenic Designer) is a Tony Award-winning designer and producer. He was a lead producer of the groundbreaking *HERE LIES LOVE*. Clint is also the Producing Creative Director for Encores! at New York City Center where he led projects including Billy Porter's reimagining of *THE LIFE*, *THE LIGHT IN THE PIAZZA* and *JELLY'S LAST JAM*. He has designed over two hundred theater, opera, and dance productions. His recent designs include the Broadway productions of *HERE LIES LOVE*, *KPOP*, *SLAVE PLAY*, *THE ROSE TATTOO*, *ECLIPSED*, *ONCE ON THIS ISLAND*, *SUNDAY IN THE PARK WITH GEORGE*, *TORCH SONG*. Film credits include: Production Design for *LINGUA FRANCA* by Isabel Sandoval for Netflix; and costume design for *RESPECT*, the Aretha

WHO'S WHO

Franklin biopic for MGM. He is a 6-time TONY Award nominee and won a TONY Award for his designs for ECLIPSED - making him the first designer of color to win in this category. @clintramos

SARAFINA BUSH (Costume Designer) Broadway: THE OUTSIDERS, THE WHO'S TOMMY, HOW TO DANCE IN OHIO, FOR COLORED GIRLS... (Tony Award Nominee), PASS OVER. Off-Broadway: SHIT. MEET. FAN. (MCC), OLIVER! (City Center Encores), EVANSTON SALT COSTS CLIMBING (The New Group), HEROES OF THE FOURTH TURNING (Obie Award: Playwrights Horizons), BROADWAY BOUNTY HUNTER (Greenwich House). Regional: THE PREACHER'S WIFE (Alliance Theatre), PETER PAN (Tour), LIFE AFTER (Goodman Theatre). Education: BA, Adelphi University.

ALEX JAINCHILL (Lighting Designer) Recent credits: X: The Life and Times of Malcolm X at the Metropolitan Opera for his debut, featured on the MET Live in HD series. He lit 2022's production of RICHARD III with the Public Theater's Shakespeare in the Park featured on PBS Great Performances. Highlight productions include: A RAISIN IN THE SUN (Lortel Award for Best Revival) for the Public Theatre, World-Premiere Musical GUN AND POWDER at Signature Theatre, MANKIND at Playwrights Horizons, BLACK SUPER HERO MAGIC MAMA at Geffen Playhouse, MACBETH at the Denver Center for the Performing Arts, UNISON at the Oregon Shakespeare Festival, and THE WIZ at Theatre Under the Stars. He is a long-time collaborator with Berkshire Opera Festival where he has lit productions of FAUST, BOHEME, DON GIOVANNI, FALLSTAFF, DON PASQUALE, and THREE DECEMBERS. He has created installations with the Lyndhurst Mansion in Tarrytown, NY and with The Museum of Future Experiences in Brooklyn. He served as associate lighting designer for SIGNIFICANT OTHER and OLD TIMES on Broadway, as well as for the world premiere of DEAR EVAN HANSEN at Arena Stage. He is so pleased to return to MCC where he previously lit Aziza Barnes BLKS. He is a faculty member at Syracuse University where he teaches Lighting Design and is a proud member of USA Local 829.

PALMER HEFFERAN (Sound Designer) is a Tony Award® nominated sound designer and composer for theater, opera, and podcasts. She received a 2019 Obie Award® for Sustained Excellence in Sound Design from the American Theatre Wing. Highlights from the last decade include BROADWAY: ALEX EDELMAN: JUST FOR US (Hudson Theatre), THE SKIN OF OUR TEETH (Tony nom, Lincoln Center); GRAND HORIZONS (Second Stage); THE LIFESPAN OF A FACT (Studio 54). OFF-BROADWAY: NOLLYWOOD DREAMS, BLKS, COLLECTIVE RAGE, CHARM, SCHOOL GIRLS (MCC Theater); TEETH (New World Stages, Playwrights Horizons); WHAT THE END WILL BE, SOMETHING CLEAN, BOBBIE CLEARLY (Roundabout Theatre); LONG DAY'S JOURNEY INTO NIGHT (Audible Theater); MERRY WIVES, SHADOW/LAND, SHIPWRECK, WILD GOOSE DREAMS (The Public Theater); WAITING FOR GODOT, FEFU AND HER FRIENDS (TFANA); FLEX, BECKY NURSE SALEM, MARYS SEACOLE (Lincoln Center); THE COMEUPPANCE, FABULATION, THE DEATH OF THE LAST BLACK MAN... (Signature Theatre). IG: @palmzhefferan.

WHO'S WHO

COOKIE JORDAN (Hair Designer) Broadway: MERRILY WE ROLL ALONG, A STRANGE LOOP, CAMELOT, THE PIANO LESSON, INTO THE WOODS, TROUBLE IN MIND, CLYDES, POTUS, SLAVE PLAY, CHOIR BOY, THE CHER SHOW, ONCE ON THIS ISLAND, SUNDAY IN THE PARK WITH GEORGE, IN TRANSIT, ECLIPSED, SIDE SHOW, AFTER MIDNIGHT, FELLA, A VIEW FROM THE BRIDGE, SOUTH PACIFIC. Off-Broadway: FLEX, ORPHEUS DESCENDING, WHITE GIRL IN DANGER, GIRLS, FEFU AND HER FRIENDS, AIN'T NO MO', FAIRVIEW, TONI STONE, IF PRETTY HURTS, THE SECRET LIFE OF BEES, ALL THE NATALIE PORTMANS, BOSEMAN AND LENA, FABULATION, OUR LADY OF 121ST STREET, IN THE BLOOD, DADDY, HERCULES. Television: Emmy nominated for make up design NBC, The Wiz Live. Recipient of 2019, 2020 Obie Award.

JOSHUA LARRINAGA-YOCOM (Props Supervisor) is happy to return to MCC after previously propping COLLECTIVE RAGE and RELEVANCE. Some of his other memorable New York premiers include THE HUMANS (Roundabout and Broadway), THE SOUND INSIDE (Studio 54), HANGMEN (Atlantic and The Golden), THE BEDWETTER, DAYS OF WINE AND ROSES, HALFWAY BITCHES GO STRAIGHT TO HEAVEN, THE SECRET LIFE OF BEES, BETWEEN RIVERSIDE AND BROADWAY, GUARDS AT THE TAJ, MARIE AND ROSETTA (Atlantic Theater Co.), LETTERS FOR MAX (Signature Theatre), HEROES OF THE FOURTH TURNING, CORSICANA, TAMBO AND BONES (Playwright's Horizons), EVANSTON (The New Group), DO YOU FEEL ANGER (Vineyard), LAZARUS (NYTW), MARY PAIGE MARLOW (Second Stage), FOR ALL THE WOMEN THEY THOUGHT WERE MAD (SoHo Rep), EPIPHANY (LCT), and Sarah Ruhl's PASSION PLAY (Epic). He is eternally grateful for the continued love and support of his husband Roberto.

ANN C. JAMES (Sensitivity Specialist/Intimacy Coordinator) made her debut as the first Black Intimacy Coordinator on Broadway for PASS OVER. Broadway credits include: SUNSET BLVD, LEMPICKA, HAMILTON, PARADE (Tony Award 2023 for Best Revival) SWEENEY TODD, HEART OF ROCK AND ROLL, THE OUTSIDERS, JELLY'S LAST JAM. Off-Broadway: SUNSET BABY, JONAH, WHITE GIRL IN DANGER, HOW TO DEFEND YOURSELF, THE COMEUPPANCE, EVANSTON SALT COSTS CLIMBING, MY BROKEN LANGUAGE, THE HALF-GOD OF RAINFALL, HERE THERE ARE BLUEBERRIES, LIFE AND TRUST, THE LONELY FEW. Tour: HAMILTON UK. James' company, Intimacy Coordinators of Color was recently awarded a Special Citation from the OBIE Awards and The American Theatre Wing. Ms. James has partnerships with The Juilliard School, Fordham University, Adelphi University, New York University, Columbia University, American Conservatory Theater, Brown University, Trinity Repertory Theater, A.R.T./New York, and The American Repertory Theater at Harvard.

IMANI CHAMPION (Production Stage Manager) MCC: THE WRONG MAN. Broadway/National Tour: MERRILY WE ROLL ALONG, ALMOST FAMOUS, TINA - THE TINA TURNER MUSICAL, HAMILTON (And Peggy

WHO'S WHO

Tour), Grand Horizons. B.A. Montclair State University. Love to family, friends, and Bug.

JOHN CARPENTIER (Assistant Stage Manager) (he/him) MCC debut! Select credits, Broadway: HELL'S KITCHEN. National Tour: MEAN GIRLS, HADESTOWN, LES MISERABLES, SPONGEBOB SQUARE PANTS THE MUSICAL. This spring John will be the ASM of Broadway's BOOP! THE MUSICAL! Love and gratitude to my amazing friends and wonderful family. Be kind to one another. @john.carpentier.

NICOLE JOHNSON / HARRIET TUBMAN EFFECT (Diversity, Equity & Inclusion). Nicole Javanna Johnson is the Founder of the Harriet Tubman Effect Institute, a human resource center and institute of research for dismantling systemic oppression. DEI Director and Consultant on PASSOVER, FREESTYLE LOVE SUPREME, INTO THE WOODS, SWEENEY TODD, IS THIS A ROOM, and DANA H., Lincoln Center and New York Theater Workshop. Proud DEI consultant of MCC shows from the 2023-2024 season including WALK ON THROUGH and THE CONNECTOR. www.harriettubmaneffect.com

THE TELSEY OFFICE (Casting) With offices in both New York and Los Angeles, The Telsey Office casts for theater, film, television, and commercials. The Telsey Office is dedicated to creating safe, equitable, and anti-racist spaces through collaboration, artistry, heart, accountability, and advocacy.

ACTORS' EQUITY ASSOCIATION ("Equity"), founded in 1913, is the U.S. labor union that represents more than 51,000 professional Actors and Stage Managers. Equity fosters the art of live theatre as an essential component of society and advances the careers of its members by negotiating wages, improving working conditions and providing a wide range of benefits, including health and pension plans. Actors' Equity is a member of the AFL-CIO and is affiliated with FIA, an international organization of performing arts unions. Equity is governed by its own members through an elected Council, representing principal actors, chorus actors and stage managers living in three regions: Eastern, Central and Western. Members at large participate in Equity's governance through a system of regional Boards and Committees. Equity has 28 designated area liaison cities with over 100 members each. #EquityWorks



**ACTORS'
EQUITY**
ASSOCIATION 1913

The actors and stage manager employed in this production are members of Actor's Equity Association, the union of professional actors and stage managers in the United States.



The Director is a member of the **STAGE DIRECTORS AND CHOREOGRAPHERS SOCIETY**, a national theatrical labor union.



**UNITED
SCENIC
ARTISTS**



**Cultural
Affairs**



**NEW YORK
STATE OF
OPPORTUNITY.**

**Council on
the Arts**

OUR MISSION

“There’s no better life than a life in theater in New York City.”

—Bob LuPone (1946-2022), Founding Artistic Director

Our mission is to provoke conversations that have never happened and otherwise never would.

MCC THEATER was founded in 1986 as MANHATTAN CLASS COMPANY by a collective of young actors, writers, and directors determined to steer their own artistic development—and shake things up! That initial group included Artistic Directors **Bernie Telsey**, **Bob LuPone** and **Will Cantler**, since joined by Executive Director **Blake West**. Our increasingly expansive work continues today, in fond memory of Bob.

- **WE PRODUCE EXCITING THEATER.** We produce seasons of BOLD new plays and musicals by exceptional ARTISTS.
- **WE DEVELOP NEW WORK.** We develop NEW WORK by emerging and established artists through a rigorous process that encourages CREATIVE RISK-TAKING.
- **WE HONOR YOUNG VOICES.** Each year our education programs use the power of theater to ROUSE the imaginations of over 1200 high school STUDENTS across ALL FIVE BOROUGHES.
- **WE GET PEOPLE TALKING.** COLLABORATION and COMMUNITY are at the core of everything we do.



the CAST of THE CONNECTOR / photo by JOAN MARCUS

EDUCATION PROGRAMS

For 25 years, MCC Theater has held a series of intensive in-school and after-school education programs that now serve approximately 700 New York City public high school students each year, offering them a platform to be heard and the opportunity to speak their truth. The goal of this work is to celebrate and honor the mosaic of identities of New York City's young people and their experiences in a non-competitive and socially conscious environment.

MCC's Youth Company serves NYC high school students through the Performance Lab, Playwriting Lab, the Ambassadors, and Brooklyn Youth Company. Participants attend weekly meetings that focus on ensemble building, devising, and writing. Company members also attend professional productions around New York City and master classes with guest artists during school breaks throughout the year. Performance Lab and Brooklyn Youth Company culminate in an annual original collaborative production titled **UNCENSORED**. Playwriting Lab ends their program with the **FRESHPLAY FESTIVAL**, where young writers' new plays are shared by professional actors and directors in two days of play readings. Ambassadors meet monthly to gain a fuller understanding of the industry by learning about a broad range of theater professions and visit non-profit theaters across the city.

Through **Classroom Partnerships**, MCC collaborates with New York City public high schools to integrate sequential arts curricula into English, Art, and Social Studies classes. The schools participating during the 2024/25 season are the George Washington High School Educational Campus, Manhattan International High School, and the High School for Public Service, which also hosts the Brooklyn Youth Company.

Student Matinees make it possible for public schools with limited access to performing arts organizations to attend MCC productions.

JOIN US

MCC Youth Company Playwriting Lab's FRESHPLAY DISCOVERY: DEC 13–14

MCC Youth Company Performance Lab's UNCENSORED: APR 18–APR 27

MCC Youth Company Playwriting Lab's FRESHPLAY FESTIVAL: JUN 7



PUBLIC ENGAGEMENT

In support of our mission to provoke conversations, MCC has created a full suite of free public engagement programs serving over 1000 people annually that center our mainstage productions and the themes that those works address.

LET'S TALK: Post-show Talkbacks offer audiences an opportunity to ask questions of the cast and creative teams. In Post-show Audience Conversations audiences engage with one another in conversations about the play they have just seen.

LET'S ENGAGE: Open Forums and Workshops feature activities and subject matter that uplift issues highlighted in our mainstage productions and are designed to enhance engagement, giving participants an opportunity to reflect on the work.

LET'S WATCH: Community nights offer social opportunities before shows for audience members to connect with each other and learn more about resources available to artists throughout the city.

LEARN MORE

Introducing standalone workshop opportunities open to the public ages 14 and up, at accessible prices.

JOIN US

[PUBLIC ENGAGEMENT EVENTS](#): [Click here for details and RSVP today!](#)

MCC Theater's Education Programs are supported by Axe-Houghton Foundation, Cornelia T. Bailey Foundation, Emily Davie and Joseph S. Kornfeld Foundation, Harold J. Newman† & Ruth Newman, the Eric Rosedale Playwriting Fund, Tiger Baron Foundation, New York State Council on the Arts, and public funds from the New York City Department of Cultural Affairs in partnership with the city council.



THE ROBERT W. WILSON MCC THEATER SPACE

Inaugurated on JAN 9, 2019, MCC's Hell's Kitchen home, **THE ROBERT W. WILSON MCC THEATER SPACE**, is a state-of-the-art complex designed for us to do what we do best: shake things up. The space houses two theaters, two rehearsal studios, extensive backstage facilities, administrative offices, and ample audience amenities.

THE NEWMAN MILLS THEATER is named for Ruth & Harold[†] Newman and Marianne & Steve Mills. As dedicated co-chairs of The Campaign for MCC THEATER, they led a successful fundraising effort in support of MCC's education and artistic programs.

THE SUSAN & RONALD FRANKEL THEATER is named for Susan & Ronald Frankel. They have been active with the company since 2015. Susan Frankel is also an MCC THEATER Board member.

ROBERT W. WILSON was a well-known and successful investor from the mid-1960's to the mid-1980's. After retirement, he devoted his life to philanthropy. He was a transformative philanthropist, primarily funding worldwide organizations in the preservation and conservation areas. An avid New Yorker, he was also involved with a number of New York's cultural institutions. He was a major supporter of, and held leadership roles with, the Brooklyn Botanic Garden, Environmental Defense Fund, The Metropolitan Opera, the Whitney Museum, and the World Monuments Fund. In addition, he and the Trust continue to support the above institutions and The Nature Conservancy, The New York Public Library, Central Park Conservancy, BAM, and the Wildlife Conservation Society.



LAND ACKNOWLEDGMENT

MCC THEATER wants to center our event in practices rooted in fostering community. We acknowledge how the PAST and the FUTURE converge on our PRESENT. MCC'S theater home sits on the UNCEDED land of the LENAPE people. We acknowledge that this stolen land was worked on by enslaved Africans. May this living land acknowledgement—to the LENAPE, their elders past and present, and their future generations, as well as to the experience of enslaved Africans and their descendants, serve as a starting ground for change.

PATRON PROGRAM

Every Patron is treated to....

- **PERSONALIZED TICKET SERVICE**—we reserve the best seats for you.
- **EARLY ACCESS** to information about casting, special events, and future programming.
- **YOUR PERSONAL INVITATION TO POST-SHOW PATRON EVENTS** to meet the cast, talk to the artistic leadership, and be a part of the conversation with other Patrons.
- **THE CHANCE TO ATTEND PRIVATE READINGS** and other exclusive special events.
- **A TAX DEDUCTION** for supporting our work.

MCC is a nonprofit, and we count on our Patron community to support the work behind the work. Your tax-deductible contribution helps us...

- **PRODUCE** vital new plays and musicals.
- **DEVELOP** new work by the next generation of theater artists.
- **CHANGE** the lives of nearly 1,200 NYC public high school students each year.



Learn more at patrons@mcctheater.org,
(212) 727-7722 ext. 233

WE SAVED YOU A SEAT

Commemorate
your support of
MCC THEATER
with a seat in the
Newman Mills Theater.

Standard seats begin at \$1,500 per seat.
For more information about seat naming,
please contact Kristina Dizon at
kdizon@mcctheater.org or (212)727-7722 ext. 212

STAFF FOR SHIT. MEET. FAN.

Company Manager	Frances Ramos
Production Assistant/Company Management Assistant.....	Alejandra Lucero
Associate Director	Nicholas Polonio
Associate Scenic Designer.....	Riw Rakkulchon
Associate Costume Designer	Martín Lara Avila
Assistant Lighting Designer.....	Austin Boyle
Assistant Sound Designer.....	Evan Cook
Associate Hair Designer.....	Yamilet Lopez-Ramirez
Make Up Consultant.....	Kirk Cambridge Del-Pesche
Props Assistant.....	Simon Knox
Props Crew.....	Paul Britwistle, Brett Cotov, Patrice Escandon, Jessie Tidball
Technical Director.....	Robert Mahon
Deck Carpenter.....	Morgan Southwell
Carpenters.....	Tait Alcivar, Matt Baguth, Anna Biggerstaff, Emmy Boisvert, Sean George, Colin Gold
Production Department Assistant	Ashlynn Baumgartner
Costume Shop Manager	Caitlin Dixon
Wardrobe Supervisor.....	Sherry Martinez
Dresser.....	Margarita Herrera
Hair Supervisor.....	Tressa L. Cottone
Stitchers.....	Celestine Cervantes, Kaitlin Turek
Shopper.....	Chris Hynds
Production Audio.....	Max Baines
Phone Effects Programmers.....	Evan Cook, Bailey Trierweiler
Sound Board Operator.....	AJ Glover
Audio Crew.....	Emery Cohen, Michael Lee, John Millerd
Production Electrician	John Tees III
Lighting Programmer.....	Brandon Bagwell
Light Board Operator	Aaliyah Stewart
Lighting Crew.....	Jordan Acosta, Ghram Darnell, Ben Free, Deric Gerlach, Olivier Matheny-Plamondon, Vincent Proker, Rebekah Ryan, Diane Tees, Danielle Verkennes, Max Wooding
Key Art Design.....	The Numad Group / Ted Stephens III, Brendan Whipple
B-Roll	Bardo Arts
Production Photography.....	Julieta Cervantes
Scenery.....	Tom Carroll Scenery
Lighting Rental.....	PRG Lighting
Sound Rental.....	Masque Sound
Physical Therapy.....	Spear Physical Therapy

MCC THEATER STAFF

Artistic Directors.....	Bernie Telsey, Will Cantler
Executive Director	Blake West
General Manager	Beth Dembrow
Associate General Manager.....	Brendan McNamara
Company Manager.....	Frances Ramos
Audience Services Manager	Josué Hernández
Senior Box Office & Audience Services Assistant.....	Anissa Griego
House Managers.....	Erik De Jesus, Jenyvette Del Valle Vega, Alejandra Ramos, Destiny Rivera
Ushers.....	Natalie Almanzar, Tom Bagley-Vas, Maggie Blaise, Paola Hernández, Ally Ibach, Lena Jackson, Eliezer Martinez, Seymour Shaw, Dylín Taylor, Leandra Torres
Box Office Staff.....	Jenyvette Del Valle Vega, Paola Hernández
Administrative Assistant.....	Hannah Hernandez
Director of Finance	Linda Wong
Finance & Business Manager.....	Laura Knutzen
Finance Assistant.....	Devika Chandani
Manager of Artistic Development	Elissa Huang
Manager of Musical Programming & Development	Scott Galina
Artistic Assistant.....	Penzi Hill
Director of Production & Facilities.....	Steve Rosenberg
Facilities Manager.....	Steve Hail
Costume Shop Manager	Caitlin Dixon
Building Consultant.....	Jason Walters
Associate Director of Development	Vinny Martini
Development Consultants.....	Sandra Davis, Lauren Siegel
Manager of Institutional Giving.....	Carrie O'Dell
Special Events Coordinator	Kayla Campise
Individual Giving Coordinator.....	Robin Weiner
Development Operations Associate.....	Kristina Dizon
Outbound Fundraising Consultant	Kel Haney
Outbound Fundraising Team	Sam Hood Adrain, Giuliana Carr, Julia Cassandra, Alessandra Migliaccio, Keith Weiss
Director of Marketing & Communications	Abigail Langsted
Marketing Associate	Marcellis Cutler
Graphic Design & Videography	The Numad Group / Ted Stephens III, Brendan Whipple, Tony Cotte
Additional Videography.....	Bardo Arts
Press Representatives.....	Print Shop PR/Matt Ross, Nicole Capatasto, Liz Lombardi, Grace Walker
Director of Public Engagement & Education.....	Meggan Gomez
Manager of Education Programs	Dee Hughes
Public Engagement & Education Coordinator	Dom Martello
Brooklyn Youth Company Consultant	Vickie Tanner
Youth Company Performance Lab Director.....	Javon Q. Minter
Youth Company Playwriting Lab Director	Juan Ramirez, Jr.
Youth Company Playwriting Lab Assistant Director	Alexander Lambie
Senior Teaching Artists.....	Matt Higgins, Raphael Peacock
Teaching Artists	Liz Morgan, Marissa Stewart, Vickie Tanner
Youth Company Alumni Fellow.....	Isaiah Martinez
Security Team.....	Metro One
Janitorial Staff	Impressive Cleaning Services Inc.
Concessions.....	Sweet Hospitality

BOARD OF DIRECTORS

Marianne Mills, *Chair*
David Lloyd, *Vice Chair*
Devashish Jain, *Treasurer*
Robert J. DiDiano, *Secretary*
Susan Raanan, *Chair Emeritus*

Will Cantler
Kareem Crayton
Barbara Doran
Nicole Eisenberg
Melvin Epstein
Susan Frankel
Cathy Glaser
Peter Hedges

Claudia Newman Hirsch
Judith Light
Neil S. Mitchell
Erik Piecuch
Cesar Rocha
Jodi Schneider
Bernie Telsey
Lois Weinroth
Blake West

MCC COUNCIL

Peter Dolchin
Iliana Guibert
Deborah Heineman
Jordan Hyatt

Jenny Jones
Marina Marcoux
Kristine Louis Reynal
Jill Surdyka-Kim

FOUNDATION AND GOVERNMENT SUPPORT

\$100,000+

Howard Gilman Foundation
The Shubert Foundation

The Harold and Mimi
Steinberg Charitable Trust
Tiger Baron Foundation, Inc.

The Blanche & Irving Laurie
Foundation

\$50,000-\$99,999

The Emily Davie and
Joseph S. Kornfeld
Foundation

Laurents/Hatcher
Foundation

New York City Department
of Cultural Affairs in
partnership with the City
Council

\$25,000-\$49,999

Cornelia T. Bailey Foundation
New York State Council on
the Arts

Richenthal Foundation

\$10,000-\$24,999

The Charles & Lucille King
Family Foundation Inc.

\$5,000-\$9,999

Axe-Houghton Foundation
Lucille Lortel Foundation
NYSCA/TDF TAP Plus

\$500-\$4,999

Actors Equity Foundation

List as of 4/2/24

PRODUCER'S CIRCLE

Thank you to our generous Producer's Circle level & above supporters who provide major support of our mission to provoke conversation among artists, audiences and students. Members receive benefits that provide exclusive access to the process of making theater at MCC and follow a play's journey from the page to the stage. To learn more, please contact Vinny Martini at 212-727-7722 ex. 205 or vmartini@mcctheater.org.

\$10,000+

Brooke Adams &
Tony Shalhoub
Colbert Family Fund of
Coastal Community
Foundation of SC
Kareem Crayton
Carol G. Deane
Robert J. DiDiano
Barbara Doran

Nicole & Stephen
Eisenberg
Rachel & Melvin Epstein
Susan & Ronald Frankel
Alice & Bruce Geismar
Cathy Glaser &
Steve Semlitz
Jessica & John Greenwood
Russel Hamilton
Claudia & David Hirsch

Devashish Jain &
Marc-Antoine Denechaud
Michael Patrick King
Gina Leonetti
Judith Light
The Judith Champion
Charitable Foundation
Nancy Molesworth
David L. Lloyd &
Meg Mortimer

Marianne & Steven Mills
Shelly & Neil S. Mitchell
Erik Piecuch &
Alex Bong Wright

Susan Raanan &
Robert Fleischer
Eric Rosedale
Jodi & Marc Schneider

Pam & Larry Tarica
Lois Weinroth

List as of 9/23/24

MCC SUPPORTERS & PATRONS

We are deeply grateful to all our generous donors and members of our Patron & Friends Programs, who provide vital annual support for our programming on and off stage, our education, and public engagement initiatives, and so much more. For more information on making a gift to MCC or joining the Patron Program, please visit mcctheater.org/support or contact patrons@mcctheater.org or (212) 727-7722 ex 233.

\$5,000-\$9,999

Anonymous (2)
Mr. & Mrs. David Ackert
Liz Armstrong
The Bartos Family
Barbara & Paul Bernstein
Linda & Mel Brosterman
Sharon Kirschner
Heni Koenisberg
Judith & Douglas Krupp
Marina & Bill Marcoux
Belinda Neumann-Donnelly
Dr. Robert Press
Todd Rubin
Irwin S. Scherzer Foundation
Sherry Steiner Schwartz
Amy & Stephen Sills
Martin Small
Wendy Vanden Heuvel
Catherine & Jonathan
Wachtel

\$3,500-\$4,999

Anonymous (1)
Zach Aaronson
Sasha
Elizabeth Columbo
Jennifer Diamond
Joan Weingarten &
Bob Donnalley Gift Fund
William W. Donnell
Deborah & Ronald
Eisenberg Family
Foundation
Amy & Frank Garrison
Judith A. Garson &
Steven N. Rappaport
Andrea Gellert
Alfred Giordano
Robyn Goodman &
Anna Louizos
Iliana Guibert
Jordan Hyatt &
Peter Dolchin
Tina Johnson-Marcel
Jenny Jones
Meagan Jones
Candy & David Kultgen
Kory Merten

Rosemary Newman
Rabbi Barton & Jane Shallat
Jill Surdyka-Kim
Aimee Telsey &
Richard Friesner
Ellie & Dan Fund
Mary Beth & Alan Wilmit

\$2,000-\$3,499

Anonymous (12)
Anne & Andy Abel
Kim & David Adler
The Angelson Family
Foundation
Jodi & Craig Balsam
Gwen Barnes
Molly Bass
Mark Beatt
Janet Benton
The Berkson Family
Stacey & Jeff Bernstein
Fran Berrick
Monty Blanchard &
Leslie Tcheyan
Louise Blaney
Jane Borg
Stuart Breslow
Andrea Brown &
Robert Levande
Linda S. Burrows
Mary-Mitchell Campbell
Steven Carlson
Linda & Arthur Carter
Debra Cassara
Howard & Sharon Charles
The Carse Family
Rebecca J. Cheeks, PhD
Cathy Chernoff
Mary Cirillo-Goldberg
Patti & Harvey Cohen
Paul Colaizzo
Andrea Collins
Erin Collins
Susan Connors
Liz Curtis, Wild Geese
Productions
Elizabeth Cuthrell
Costa & Katherine Darras
Cathy Dault

Dr. Irene Rosner David,
in Memory of
Dr. Raphaël David
Camille Diamond
Paul & Jenny Diamond
Mark Dixon
Susan & Todd Eckland
Susan Edelstein
Stephen & Peggy Falanga
Sheri Feigen
Eileen Fink
Steven Fink & Karen Schrift
Michael Fowlin
Jennifer Futch
Felice Zwas & Sarah Gallen
Lynn George
Maria Giacchino &
Tom Pescherine
Amy & Abe Glass
Charles & Heather Golden
Carolyn Gould
Carol Schiro Greenwald,
PhD; In Memory of
Karen Kayser-Benson
Mark Greenwald
Carol & Steve Gutman
Bradley Hames
Ian Harris &
Chloe Kernaghan
Thomas Harvey
Soledad & Jose Hiciano
James Higgins
L. Keith Hughes
Sophie Hughes
Rachel Hutchinson
Sally & Robert Huxley
Mark Jacobson, D.D.S.
In Honor of
Ronald O. Jacobson
Karen Johnston
Dr. James Jones
Robin A. Jones
Georgann Joseph &
David Marker
Gregory & Mary Juedes
Isabel Kallman
Mara Fleur Kanner
The Katz Family
Roberta & Kim Kelly

Joanne Kennedy &
Rich Collins
Fern Kershon
The Klena Family
Deborah Kopinski
Elayne Landau
DeHunte-Lantigua
Household
Wink Public Relations
Lynn & Kevin LaPierre
Adam & Canella Larrabee
Jon LaPook & Kate Lear
Karen Leeds
Dr. & Mrs. Allen Levine
Jan & Rachel Levine
Leslie Lewit-Milner &
Dr. Lawrence Milner
David & Deborah
Livingstone
A A Lobelo
Stephan Loewentheil &
Natalie Wolfman
Lisa Lowe & David Lipsky
Eileen O'Hern Luby
Jane Macan
Linda MacKinnon
Reeva & Ezra Mager
Leonard Majzlin
Eric & Paulette Mann
Barbara Manocherian
Judith Manocherian
Nina Matis
KC Maurer
Patricia Meadow
Michael Mealiffe &
Dean Pitchford
Israel Meir & Steve Rivera
Lisa Melmed
Dan & Lisa Miller
Kelly & Blake Miller
Ann Miner
Jill Cordle Mont & Ira Mont
Jennifer Morrow
Deborah & Ivan Moskowitz
Adele Mouzon & Mark Perry
Stephen Murphy
Sheila Nevins
Erica Newman
Susan & David Noonan
Michael Oosterhout
Lisa Orberg
Ellen Ozur & Stuart Brown
Gabrielle & Michael Palitz
Adam Parrish
Pamela Pasquale
Matt Pearson - Marron
Foods
Jerilyn & Brian Perman
Marla Persky &
Craig Heberton
Tracey Pontarelli
Brette Popper & Paul Spraos
Andrew Powell
Kim Powers
Karla Radke

Gale Raspen
Mindi Reich-Shapiro
Niegel Remington
Fritz Reuter
Maria Ricaurte
David Rockwell
Kristine Louis Reynal &
Max Reynal
Claire Rose & Michael Woloz
Judith Eve Rosen, LCSW
Cathy & Michael Rosen
Susanne Rostock
Howard & Joan Rothman
Neal Rubinstein
Dashiell Rucka
Faith Ryan
Peggy Schmitt
Miriam Schneider
Christine & Jennifer
Schoppe
Steven Schreiber &
Amy Lorowitz
Roger Schwed &
Laura Dukess
Andrea & Mark Seiden
Randi Sellinger
Niki & Tony
Seaview Productions
Jayne Baron Sherman &
Deby Zum
Ms. Barbara Shulman
Barb Shum
Marilyn Sobel & Ben Cohen
Dr. Carolyn Springer
Samson Staff &
Caroline Shehan
Mark Stein
Al Stotzer
Jenni Swan
Judith Sykes & Fred Seid
Stewart Alden Tabler
Kimberly Taylor &
James Gale
Suzanne Telsey &
Steven Bennett
Superqueer Tzedakah Fund
Nicholas Troisi
Trustman Family
Lacey & Cheryl Tucker
Kara Unterberg
Deborah Walker
Deborah Wallach
Robin & Leigh Walters
Victoria Wanser
Margie & Brian Weingarten
Rachel Weinstein &
Jason Pizer
Patricia & Mark Willis
Diane Wiltshire &
Dr. Steven Jenkins
Richard Winkler
Elizabeth Wiseman &
Deborah Shutt
Billy Wong &
Stephanie Gordon

Roy Youman & Juliet Borja
Amy & Jared Zerman
Rachel Ziemba

\$1,500-\$1,999
Anonymous (3)
Randy Adams
Steven Aripotch &
Bruce Jones
Kendrick Basso
Michael Casey
Carlito's Way
Ann E. Darby &
William C. Dudley
Karen Dukess &
Steve Liesman
Diana Elghanayan
Nancy Feldman
David Govaker
Lisa Hadar
Susan T. Harris
Gregory Jensen
Patty Laxton
Cary & Jan Lichtenberg
Steve Levitan
David Lipowicz
Virginia & Timothy Millhiser
Terry Nardozi
David & Deborah Ortmeyer
Clint Paton
Ellen Saidenberg
Murray & Brenda Schane
Mary J. Shannon
Jane Stanicki
Ellen Stewart, Pushy Broad
from the Bronx®
Rose Tatlow & Neil Roseman
Andrew M. Wentink

\$1,000-\$1,499
Anonymous (2)
Whitney Anne Adams
Peter Anderson
Elizabeth Bass
Jeff Berman
Andrea Brandon, MD
Stephen Breimer
Meg & Neil Brisson
Emily A. Chen
Donna Chirico
Jennifer B. Crawl
Mary Davis & MBL
Productions
Bunny Dell
Frank Fekete
Chelsea Field
Linda & Mark Florin
Debby Goldberg
Laurence Greenwald &
Karen Adler
Monica Halpert
Sheila & Mike Hartnett
Molly K. Heines &
Thomas J. Maloney
Donna Hepperman

Haley Huxley	Andrew Berman & Silvia Spagnoli	Robert Kory
Joan Katz	David Blews	Alec Kubas-Meyer
Lloyd Khaner	Jean Bortner	Robb Lady
Elizabeth King	Patrick Briggs	Nicole LaFontaine
Sidney Kohl Family Foundation	Tom Broecker	Laura Lee
Natarajan Krishnaswami	Marc Bruni	Francine Levine
Frank Krug	Steven Byer	Tracy & Ross Levitt
Kathryn Lagana	Jacob Carson	Anya Liberman
James Lapine	Carol Chen	Claire Lieberwitz
Kwok Lau	Shari Citak	Amy & Frank Linde
Deirdre LeMire	Any Cole	Molly MacDermot
Kenny Leon	Bruce Cooper	Matthew MacDonald
Lindsay Levine	Dexter David	Sharon Major
Jody Mansbach	Eric DiMichele	Randy Mandel
Peter McKown	Maria De Castro	Rosie Manock
Adam Minton	Lisa & Oliver Dow	Alan Mark
Dora Naughton	Dianne Dreyer	Mel Marvin
Kathleen O'Grady	Mary Joyce Ebmeier	Heather McAdam
Marissa Osowsky	Halley Feiffer	Brooks McEwen
Robert Parrott	Michael Feinstein	Sarah McGill
The Peterson Family	Allen Feldman	Rob Mish
Joseph Please	Ken & Caryl Field	Devdutt V. & Asha D. Nayak
Martha J. Radford	Jo Ellen Finkel	Jeanne Nicolosi
Kathleen Rodenberg	Paul Fisher	Alison & Dimitris Nikitopoulos
Charlotte Schaefer	Kevin Fitzgerald	Carol Ostrow
Daniel Scheffey	Scott Fixell	Jenny Peek
Ira Schreck	Elin Flack	Edward Phillips
Tysha Scott, In Memory of Phillip R. Scott Esq.	Tom Fox	Barbara Pilnick
Sarajane Sein	Matt Freeman	Pamela Pink
Beth Senturia	Jennifer Friedman	Katie Plax
George Seylaz	Steven Froot & Mary Ann Doyle	Heather Porter
Ainka Shackelford	Yvette A. Geary	Chef Yono & Donna Purnomo
Carolyn Sicher	Nancy Nagel Gibbs	Michael Racioppi
Douglas Sills	James Gevlin	Didi Rea
Richard & Judith Silverman	Dona Gilbertson	Charles Read
Rob Silverstein & Wanda Olson	Jim & Sue Given	Hillary Reinis
Betsy Simons	Marcia Goldberg & Paul Garrity	Downtown Women for Change
Tricia Small	Peter Golden	Valerie Rennert
Ray St. Claire	Carol Goldman	Jane Rivkin
Ken Staffey	Barbara Goldstein	Donald W. Roeseke Jr.
Ted Stephens III	David Gottlieb	Ira Sachs
Heidi Storessner-Johnson	Roger Gould	Paula E. Sandoval
Anthony Sweeney	Kimberly Grigsby	Marc Schauer
Dr. Moovesa aka Victor Talbot MD	Andy Griswold	Barbara Schnitzler
Marsh	Jack Grossbart	Sondra Siegel
Faryn Riley Valdez	Robert J. Hall	Geoffrey Soffer
Tammie Weinfurtner	Jonathan Greenwood Harrison	Barbra Stein
Sharon Wickes	Kris Heinzelman	Steve & Gail Steiner
Frank Williams & Keris Salmon	John Hoffman	Christine Strong
Ellen Wright	Mike Isaacson	Juliet Taylor
David Zayas & Liza Colón-Zayas	Barbara Janowitz & Peter Entin	Albert Telsey
	Eileen Jarrett	Betty & John Tilley
	Mercy Ji	Emanuel Tsourounis II
	Ralph Johnson	Lynn Usdan
	Devin Keudell	Ian Volek
	Felicia Kimble	Susan & Jim Westerman
	Susan Klebanoff	Tamara White
	Beth Klein	Christopher Williams
	Zachary Kline	Ariel Woodiwiss
		Lisa Wright
		Debbie Young

\$250-\$999

Susan Anastasio
Maureen & Bill Barton
Monette Basson
Karen D. Baynard
Iris Bennett

MISCAST SUPPORT

This year, MCC was thrilled to return to the Hammerstein Ballroom for MISCAST24 and broadcast the show to an international audience! We're so grateful to all of our donors who helped make this event a worldwide phenomenon, and look forward to celebrating the 25th anniversary of MISCAST in spring 2025.

MISCAST24 CO-CHAIRS

Robert DiDiano
Claudia Newman Hirsch

DIAMOND VICE CHAIRS

Susan & Ronald Frankel

PLATINUM

Nicole & Stephen Eisenberg

GOLD

Robert DiDiano
The Julis Romo Rabinowitz
Family
Marianne & Steven Mills
Meg Mortimer &
David L. Lloyd Jr.
Eileen O'Hern Luby
Tiger Baron Foundation

SILVER

Days of Wine & Roses
Cathy Glaser &
Steve Semlitz
Hamilton
Claudia & David Hirsch
Gina Leonetti
Neil & Shelly Mitchell
Jenny & Roy Niederhoffer
The Notebook
Susan Raanan &
Robert Fleischer
Matthew Rooney

BRONZE

Baseline Theatrical
City National Bank
Barbara Doran
Rachel & Melvin Epstein
Barry R. Feirstein
Jessica & John Greenwood
Matthew Hui
Devashish Jain &
Marc-Antoine Denechaud
The Leo Shull Charitable
Fund for the Arts
No Guarantees
Jodi & Marc Schneider
Lois Weinroth

Wells Fargo Advisors

PRODUCER

Elizabeth Armstrong
FourthWall Theatrical
Dean Pitchford &
Michael Mealiffe
Judith Garson &
Steven Rappaport
Michael Patrick King
Susan Lichenstein &
John Rokacz
Stacey Mindich
Andrew Peltz
Print Positive
The Robert W. Wilson
Charitable Trust
Fiona Rudin
Alisa Savitz
Steven Silverstein &
Cathy Raduns-Silverstein
Ted Stephens III,
The Numad Group
Maureen White &
Steven Rattner

PLAYWRIGHT

Linda & Mel Brosterman
Kyra Johnson
Jacqueline Judd
Chelsea Kellogg
Debbie & Mark Kopinski
Barbara Manocherian
Judith Manocherian
Paul Morrissey
Rachel Masch
Peter McKown
The Movado Group
Foundation
Jac Scheiner
The Shubert Organization
William Morris Endeavor

DIRECTOR

Bank of America Private
Bank
Maureen Barton
Emily Baugher
Jane Bergere
Loraine Boyle

Broadway Video
Susan Bruce & Peter Hedges
Cabaret at the Kit Kat Club
Suman Chakraborty &
Joseph Shrope
David Crane & Jeffrey Klarik
Kareem Crayton
Creative Artists Agency
Davis Wright Tremaine LLP
John & Katherine Doyle
Ron & Debbie Eisenberg
Barbara Freitag
Roy Furman
The Gersh Agency
Iliana Guibert
Glenn Gunderson
Phil Haas
Bradley Hames
Deborah Heineman
Jordan Hyatt & Peter Dolchin
Karen Johnston
Jenny Jones
Jason Katims
Paula Katz
Thane Kerner
Joel Laitman &
Annette Rotter
Linda F. Lynn
Marina & Bill Marcoux
John Melfi
Jennifer Melin Miller &
David Miller
Andrew Peltz
Cesar Rocha
Joseph Rokacz &
Lawrence Gordon
David Ross & Abby Rosmarin
Neal Rubinstein
Jana Shea
Helene Stein
Jill Surdyka-Kim
Jenni Swan
Frederick Taylor
United Talent Agency
Catherine & Jonathan
Wachtel
Warner Bros. Discovery
Gayle & Jay Waxenberg
Barry Weisbord

List as of 5/15/24

THE CAMPAIGN FOR MCC THEATER

MCC THEATER is proud to thank everyone who has supported the Campaign for MCC THEATER. You helped make our dream of a home of our own a reality. Our new home allows us to deepen our mission and encourage greater collaboration amongst all of our artists, students, and audiences.

Special thanks to The Office of the Mayor of New York City, Eric Adams; The New York City Department of Cultural Affairs, Commissioner Laurie Cumbo; The New York City Council, Speaker Adrienne Adams; and the Office of Manhattan Borough President, President Mark D. Levine, for their dedication to the arts and their foundational support for this project.

\$1,000,000+

Ruth & Harold Newman†
The Gary Platt Initiative for New Musicals*
The Robert W. Wilson Charitable Trust

\$500,000-\$999,999

Susan & Ronald Frankel
Cathy Glaser &
Steve Semlitz
Howard Gilman Foundation
Marianne & Steven Mills
Steve Richardson &
Kirk Rubi
Ms. Barbara Shulman
Amy & Stephen Sills
Elizabeth & Ken Whitney

\$100,000-\$499,999

The Bonnie Cashin
Foundation
Dr. Gail Furman†
Roy Furman, Jill Furman
and Stephanie Furman
Darrow
The Garson Rappaport
Family
The Blanche & Irving Laurie
Foundation
Gina Leonetti
Susan Raanan &
Robert Fleischer
Eric Rosedale Playwriting
Fund
Rosemarie & Lou Salvatore†

\$25,000-\$99,999

Marjorie & Fredric
Altschuler
Javan Thomas Bunch
Burnt Umber Productions
Rachel & Melvin Epstein
Emma A. Sheafer Charitable
Trust
Lori & Edward Forstein
Jerry Frankel †

Dede Harris
Claudia & David Hirsch
David L. Lloyd, Jr. &
Meg Mortimer
Reeva & Ezra Mager
Shelly & Neil Mitchell
Erik Piecuch &
Alex Bong Wright
Marilyn Sobel & Ben Cohen
Sheila Steinberg
Pam & Larry Tarica
Lois Weinroth
Janine & Jonathan Whitney

\$10,000-\$24,999

Lewis G. Cole
Ann Dickinson &
Richard Purington
Liz Armstrong
Maureen & Bill Barton
Brenda & David Bass
Karen Kayser Benson†
Linda & Mel Brosterman
Jan & Will Cantler
Elizabeth Columbo
Katherine & Costa Darras
Brian Davidson &
Michael Schultz
Carol G. Deane
Robert DiDiano
Barbara Doran
Jody Falco &
Jeffrey Steinman
Cynthia & Herbert Fields
Amy & Frank Garrison
Mary Cirillo-Goldberg &
Jay Goldberg†
Peter Hedges &
Susan Bruce Hedges
Doug Hughes

Jordan Hyatt & Peter Dolchin
Leslie Larson & Don Katz
Stephanie & Ron Kramer
Lorie Cowen Levy &
Charles J. Levy, Jr.
Dr. & Mrs. Jerome &
Elizabeth Levy
John Lewin & Margie
Becker-Lewin
Virginia & Robert LuPone†
Bruce MacAffer
Marina & Bill Marcoux
William Megevick
Shelly & Neil Mitchell
Robert & Fulvia McCrie
William Megevick &
George Calderaro
Leslie Lewit-Milner & son,
Jacob Lewit
Dahlia Neiss & Family
Anh-Tuyet Nguyen† &
Robert Pollock
Brette Popper & Paul Spraos
Dr. Robert Press
Kristine Louis Reynal &
Max Reynal
Roselle Baldwin
Productions
Sherry Schwartz
Niki & Tony
Ted Stephens III
Jenni Swan
Bernard Telsey &
Anne Marino
Suzanne & Aimee Telsey
Ellie & Dan Fund
Joan Weingarten &
Bob Donnalley Gift Fund
Patty & Mark Willis

List as of 7/23/24

THE BOB LUPONE FUND FOR ARTISTIC & AUDIENCE DEVELOPMENT

The Bob LuPone Fund for Artistic & Audience Development will support new play development and outreach initiatives to develop new audiences at MCC Theater, the theater company Bob co-founded and continuously co-led beginning in 1986.

\$50,000+

The Charles & Lucille King
Family Foundation Inc.
The Newman Family

Gina Leonetti
Susan Lichenstein &
John Rokacz
Toni Lubetsky

Charles Gray in honor of
Bob LuPone
The Hansen Family
Corey Hawkins
Diane Hayden

\$10,000-\$49,999

Carol G. Deane
Judith Light
David L. Lloyd &
Meg Mortimer
Marianne & Steven Mills
Susan Raanan &
Robert Fleischer
Steve Richardson &
Kirk Rubi
Leo Shull
Steven Silverstein
Bernie & Anne Telsey

Julianna Margulies
Neil & Shelly Mitchell
Paul Morrissey
Dessie Moynihan
Eileen O'Hern Luby
Andrew Peltz
Karla Radke
Briana Richards
Meredith Robbins &
Eric Bornemann
Sherry Steiner Schwartz
Nico Sidoti & Orlagh Cassidy
Jeff Sine
J Smits
Marilyn Sobel & Ben Cohen
Elizabeth Tavel
Elizabeth Warren
Lois Weinroth

Jana Herzenberg &
Leonore Herzenberg
John Homan
John Hopkins
Alan Ibbotson
Linda & David Kalodner
Jason Katims
Deborah Kopinski
Elizabeth LaComb-Wolpert
Zahra Lahdak
Sue Leibman – Barking
Dog Entertainment
Kenny Leon
Catherine Maciariello
Kathleen McCall
The McCarthy Family
Nello McDaniel
Amy McIntosh & Jeff Toobin
Anita Merk

\$5,000-\$9,999

Melvin & Linda Brosterman
Barbara Doran
Cathy Glaser &
Steve Semlitz
Joan Weingarten &
Bob Donnalley Gift Fund

\$250-\$999

Anonymous (2)
Laura Allen
Ole Andreassen
Stafford Arima
Janice & David Barnard
Andrew Berman &
Silvia Spagnoli
Andy Blankenbuehler
Karen Braga
Marc Bryan-Brown
Geneva Carr
Nancy Carey Cassidy
Dr. Donna Chirico
Jill Cordle Mont & Ira Mont
Daniel & Scottye Doucette
/ Lindsey
Jim Edwards
Jackie Eshet
Josh Everdell
Matthew Everett
Jody Falco &
Jeffrey Steinman
Halley Feiffer
Rosalind Fink
Elin Flack

Virginia & Timothy Millhiser
Jill Cordle Mont & Ira Mont
Bonnie Monte
Mandy Oser
Marian Pardo
Mary Beth Peil
Lisa Pell
Max Ritter
Matthew Rooney
Billy Rosen
Greta Rothman
Posey Saenz
Joel Sandler
Andrea & Richard Saperstein
Richard Shutran
Amy & Stephen Sills
Pat Skipper
Meg Staunton
Helene Stein
Jenni Swan
David & Peggy Tanner
Zanthe Taylor
Amy L. Weltman
Nicholas White
Chef Yono & Donna Purnomo

\$1,000-\$4,999

The Lambs Foundation
Elaine Bayless
Jan & Will Cantler
Steve & Liz Caspi
Peter Cole
Brittany Corsi
Lorie Cowne Levy &
Charles J. Levy, Jr.
Kurt Deutsch &
Rachel Martin
Michael Emmerman
Rachel & Melvin Epstein
Judith A. Garson &
Steven N. Rappaport
Gloria Gilbert Stoga
Gary Hayes
Betsy & Wes Higgins
Susie & Harry Horgan
Ellen Jewett &
Richard Kauffman
Jolene & Mitch Julis

List as of 9/23/24

THE GARY PLATT INITIATIVE FOR NEW MUSICALS supports artistic development and production of new musicals.

STEVE RICHARDSON AND KIRK RUBI COLLEGE MENTORSHIP FUND supports MCC Youth Company college and career preparation activities.

ERIC ROSEDALE PLAYWRITING FUND supports the annual FreshPlay for the MCC Youth Company.

THE R&S SHULMAN FUND supports artistic development and production of new plays, with a focus on work by African American Playwrights

THE GARY PLATT INITIATIVE FOR NEW MUSICALS

The GARY PLATT INITIATIVE FOR NEW MUSICALS supports the costs of developmental readings, workshops, and new musical productions at MCC, with the goal of inspiring new voices and adding to the American musical theater canon.

The Initiative was formed in 2019 by Julie and Marc Platt and their family to honor the memory of their uncle and great-uncle, Gary, whose lifelong love of musical theater instilled in them a passion for this unique storytelling art form.



GAVIN CREEL in WALK ON THROUGH / photo by JOAN MARCUS

To learn more about THE GARY PLATT MUSICAL THEATER INITIATIVE, please contact Vinny Martini at (212) 727-7722 ext. 205 or vmartini@mcctheater.org

The logo for MCC Theater features a red, 3D-style square icon on the left. To its right, the text "MCC" is written in a large, white, bold, sans-serif font. Below "MCC", the word "THEATER" is written in a smaller, white, bold, sans-serif font. The entire logo is set against a dark blue background.

MCC
THEATER