

 **MCC
THEATER**

American premiere

TROPHY BOYS





BERNIE TELSEY and **WILL CANTLER** / artistic directors
BLAKE WEST / executive director

present

TROPHY BOYS

by **EMMANUELLE MATTANA**

**TERRY HU, LOUISA JACOBSON, ESCO JOULÉY,
RENITA LEWIS, EMMANUELLE MATTANA, IMANI RUSSELL**

scenic design
**MATT
SAUNDERS**

costume design
**MÁRION TALÁN
DE LA ROSA**

lighting design
**CHA
SEE**

sound design
**FAN
ZHANG**

movement
**TILLY
EVANS-KRUEGER**

voice, text and dialect coach
**GIGI
BUFFINGTON**

props supervisor
**SAMANTHA
SHOFFNER**

sensitivity
specialist
ANN JAMES

DEI consultant
**NICOLE JOHNSON /
HARRIET TUBMAN EFFECT**

casting
**THE TELSEY OFFICE /
CHARLIE HANO, CSA**

production stage
manager
**ERIN GIOIA
ALBRECHT**

directed by **DANYA TAYMOR**

general
manager
**BETH
DEMBROW**

director of
finance
**LINDA
WONG**

director of culture &
learning
**MEGGAN
GOMEZ**

director of marketing
& communications
**ABIGAIL
LANGSTED**

director of production
& facilities
**STEVE
ROSENBERG**

manager of artistic
development
**ELISSA
HUANG**

manager of musical
programming &
development
**SCOTT
GALINA**

publicity
**PRINT SHOP PR /
MATT ROSS,
NICOLE CAPATASTO,
LIZ LOMBARDI,
GRACE WALKER**

Presented in the **SUSAN & RONALD FRANKEL THEATER**

TROPHY BOYS is produced in association with Kevin Connor & Telegraph Productions Collective (Yes aka Amy Marie Haven, Leon Jones, Tori Lynn, Rachel Menendez, Siani Woods).

CAST

(alphabetical order)

David **TERRY HU**
Jared **LOUISA JACOBSON**
Scott..... **ESCO JOULÉY**
Owen **EMMANUELLE MATTANA**

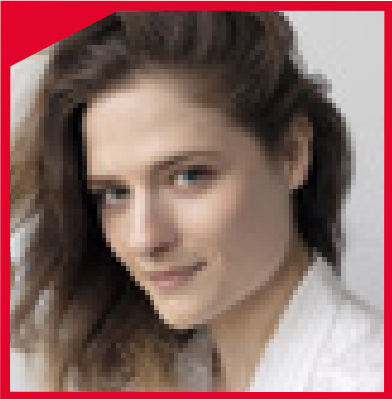
UNDERSTUDIES

Jared & David..... **RENITA LEWIS**
Scott & Owen.. **IMANI RUSSELL**

Production Stage Manager..... **ERIN GIOIA ALBRECHT**
Assistant Stage Manager..... **HOLLY ADAM**



TERRY HU



LOUISA JACOBSON



ESCO JOULÉY



EMMANUELLE MATTANA



RENITA LEWIS



IMANI RUSSELL

FROM THE PLAYWRIGHT

As a competitive high school debater I spent a lot of time with the ‘good boys’; the clever, morally-upstanding boys from elite private schools who were destined for the highest offices of power...

But the very nature of the endeavour – turning argument into sport while believing yourself the smartest in any room – required you fervently argue things you didn’t know enough about or even necessarily believe. Logic was a game, something to be won or lost, and words and arguments were things you could twist at your own whim. If you were articulate and commanding enough you could speak over anyone, or for anyone.

It was no wonder this ethos seeped so dangerously into other parts of these boys’ lives.

Even as a teenager I recognised a deep and frightening wound here – both in the harm these boys perpetrated as well as in the fabric of the very power that they would soon inherit – that I couldn’t quite articulate...

So I quit debating and ran away to become an artist and hang out with other queer weirdos who helped me imagine a braver, more radical future.

TROPHY BOYS is for my teenage self.

Gender is learnt, which means it is also taught. No more so than to those young men I knew from debate. With this brand of masculinity inhabited on stage by non-cis male bodies, my hope is that it can be revealed for what it truly is - a comical, absurd and ultimately disturbing performance.

It is also a performance that hurts our boys and men. As bell hooks explains “the first act of violence that patriarchy demands of males is not violence toward women. Instead patriarchy demands of all males that they engage in acts of psychic self-mutilation, that they kill off the emotional parts of themselves.”

May this show be an invitation; if we can put this on, what can you take off? Gender is a scam but it is also a gift. Drag is radical joy and liberation. The binary hurts us all in different but interconnected ways, as does the systemic effort to deny the existence and rights of queer, trans and gender-nonconforming citizens. Thank you for joining us in the theatre and in the world.

- Emmanuelle Mattana,
TROPHY BOYS Playwright

WHO'S WHO

EMMANUELLE MATTANA (Playwright, Owen) (she/they) is an Australian actor, writer and maker passionate about telling stories that blend the playful with the political and connect with young, queer audiences.

Her debut play TROPHY BOYS is having its American premiere at MCC Theater before returning to tour Australia again after its 2024 national tour to sold out audiences and critical acclaim, where it was awarded Best New Work at the Sydney Theatre Awards, Best Play in Melbourne by Broadway World Australia, and voted Best Performance for Students from its inclusion in the Victorian curriculum.

As a performer, they are best known for leading three seasons of the International Emmy® Kids-nominated tween series “MUSTANGS FC” (ABCMe x NBCUniversal) and “VIDEO LAND”(Netflix), which was awarded Best Comedy at Series Mania. Feature film FWENDS, which she leads and co-wrote, premiered at the 75th Berlinale, where it was the first ever Australian film to win the Caligari Prize. She has been in residence with the emerging writers groups at Sydney Theatre Company and Malthouse Theatre, and also worked with Red Stitch Actors Theatre, Australian Theatre for Young People, and FortyFiveDownstairs.

Thank you to Mum, Papa and Remy-Roo, my favourite 16-year-old boy. I love you.

DANYA TAYMOR (Director) is a Tony® and Obie Award-winning New York-based director. Her Tony Award-winning production of THE OUTSIDERS musical is currently running on Broadway at the Jacobs Theater. Recent direction: Rachel Bonds’ JONAH (Roundabout); the Broadway production of Antoinette Chinonye Nwandu’s PASS OVER; Will Arbery’s Pulitzer Finalist HEROES OF THE FOURTH TURNING (Playwrights Horizons); EVANSTON SALT COSTS CLIMBING (New Group); Samuel Beckett’s ENDGAME (Gate, Dublin); Jeremy O. Harris’ “DADDY” (Almeida, London & New Group/Vineyard); Korde Arrington Tuttle’s GRAVEYARD SHIFT (Goodman Theater); Danai Gurira’s FAMILIAR (Steppenwolf); Martyna Majok’s QUEENS (Lincoln Center Theater). Her production of Antoinette Nwandu’s PASS OVER was filmed in collaboration with Spike Lee and premiered at the Sundance Film Festival and is streaming on Amazon Prime. Current work includes Kimberley Bellflower’s JOHN PROCTOR IS THE VILLAIN on Broadway at the Booth Theater. BA: Duke University

TERRY HU (David) is a Chinese, queer, non-binary actor from New Jersey. Though they majored in Neuroscience at UCLA and were accepted into top physical therapy programs post-graduation, they ultimately turned down school to pursue their childhood dream of acting instead.

That same year, they won ABC’s nationwide Digital Talent Competition and eventually went on to make history as Disney’s first live-action non-binary character in ZOMBIES 3. They also star in Netflix’s acclaimed

WHO'S WHO

series “NEVER HAVE I EVER” and Hulu’s PROM DATES, which ranked among Variety’s Top 10 most streamed films during its opening week. Now, they are thrilled to be making their theater debut in TROPHY BOYS, directed by Tony Award® winner Danya Taymor.

LOUISA JACOBSON (Jared) is a versatile performer known for her breakout role as Marian Brook in HBO Max’s hit period drama “THE GILDED AGE,” returning for its third season this summer. She will soon make her feature film debut in Celine Song’s THE MATERIALISTS, starring alongside Dakota Johnson, Pedro Pascal, and Chris Evans. Her theater credits include acclaimed performances in TRAYF at The Geffen Playhouse, ROMEO AND JULIET at The Old Globe, NATIVE SON at Yale Repertory Theatre, THE MEMBER OF THE WEDDING at Williamstown Theatre Festival, and LUNCH BUNCH presented by The Play Co. and Clubbed Thumb. She also served as Assistant Director on Maia Novi’s acclaimed Off-Broadway production of INVASIVE SPECIES. Jacobson is a graduate of the Yale School of Drama and currently resides in New York City. Jacobson is represented by CAA and Brookside Artist Management.

ESCO JOULÉY (Scott) is winning over audiences as “Sonya” in the acclaimed FX series “DYING FOR SEX,” alongside Michelle Williams and Jenny Slate, and previously starred opposite Patricia Clarkson and Brendan Gleeson in the Sundance series “STATE OF THE UNION.” Esco returns to MCC, having previously performed in WOLF PLAY (also SoHo Rep) and other recent theatre includes MERRY ME (NYTW), AS YOU LIKE IT (La Jolla), and TWELFTH NIGHT (Old Globe). Additional television includes “BLINDSPOTTING” (Starz), “HIGH MAINTENANCE” (HBO), “INVENTING ANNA” (Netflix), “MONSTERLAND” (Hulu), and the “ABC DISCOVERS: TALENT SHOWCASE.”

RENITA LEWIS (u/s Jared & David): Off-Broadway/ Regional: FLEX (AUDELCO winner, Lucille Lortel nominee), GAMES (Soho Playhouse), THE VIRTUOUS FALL OF THE GIRLS FROM OUR LADY OF SORROW (The Flea), LORDES (New Ohio Theatre), THE TEMPEST, PHOTO PLAY (Dixon Place), iHeartRadio’s scripted podcast, “TAMPON ROCK” (Deja), Film/TV: NEWBIES, TRIPPED UP. Education: Juilliard Drama MFA (Current).

IMANI RUSSELL (u/s Scott & Owen)(they/them) is a proud born&raised&representing Brooklyn artist. Trained in classical music, musical theatre and acting, Imani made their Broadway principal debut in the groundbreaking new musical HOW TO DANCE IN OHIO and has performed on various Off-Broadway stages. Imani is also a proficient voice actor, lending their voice to award-winning series and podcasts, as well as audiobooks. TROPHY BOYS is Imani’s MCC debut! Siempre pa’lante; nunca pa’trás. @imanithecowboy | www.imanirussell.com

MATT SAUNDERS (Set Design): Selected Off-Broadway work: WALDEN (Second Stage), JORDANS (The Public Theater), FLEX (Lincoln Center), “DADDY” (The New Group & Vineyard), PIPELINE

WHO'S WHO

(Lincoln Center), VENUS (Signature Theater Company), GOOD PERSON OF SZECHWAN (The Foundry Theatre & The Public Theater). Over 100 regional credits including: The Alliance Theatre, Guthrie Theater, Goodman Theatre, Mark Taper Forum, Berkeley Rep, Yale Rep, The Huntington Theatre Company, Long Wharf Theatre, Woolly Mammoth Theatre Company, Actor's Theatre of Louisville, Wilma Theater, and the John F. Kennedy Center. Saunders' opera credits include: The Apollo, New York Philharmonic, Los Angeles Philharmonic, Spoleto, Opera Philadelphia, and Glimmerglass. Internationally, Saunders has designed in London, Amsterdam, Rotterdam, Bruges, Barcelona, and Malmö. Saunders' design work has been featured at the Prague Quadrennial, and he has received a Barrymore Award (Philadelphia), AUDELCO Award (NYC), as well as a Drama Desk Award for Best Set Design (NYC). Training: MFA, Yale School of Drama. Saunders is a Pew Fellow and a Hodder Fellow at Princeton University, and Associate Professor of Design at Swarthmore College. mattsaunderdesign.net

MÁRION TALÁN DE LA ROSA (Costume Design): Born in Mexico City, Mexico and based in Brooklyn, Márion has collaborated with many artists and theater innovators for drama, opera and dance throughout her career. Recent collaborators include Daisy Prince, Jason Robert Brown, Jonathan Marc Sherman, Heather Christian, Lee Sunday Evans, Anne Kauffman, Julia Wolfe, Joe Salvatore, and Teddy Bergman among many others. She was nominated for a Drama Desk Award (THE CONNECTOR, 2024) and The Lucille Lortel Award (ORATORIO OF LIVING THINGS, 2022).

CHA SEE (Lighting Design): Broadway: OH, MARY! Off-Broadway: WET BRAIN (MCC and Playwrights Horizons; Obie Award Special Citation recipient); ON THAT DAY IN AMSTERDAM (Drama Desk and Lucille Lortel Award nominations); JORDANS (The Public); YOU WILL GET SICK (Roundabout Theatre Company); THE SEAGULL, NY, one in two (The New Group; AUDELCO nom.); WHAT TO SEND UP WHEN IT GOES DOWN (Playwrights Horizons/BAM); SOFT (MCC). Education: MFA from NYU Tisch. @seethruu

FAN ZHANG (Sound Design): Recent Off-Broadway: GOOD BONES (Public), JORDANS (Public), WHAT BECAME OF US (Atlantic), THE FAR COUNTRY (Atlantic), AT THE WEDDING (Lincoln Center), THIS LAND WAS MADE (Vineyard), THE LIGHT AND THE DARK (59E59), SNOW IN MIDSUMMER (Classic Stage), PARIS (Atlantic), OUR DEAR DEAD DRUG LORD (Second Stage & WP), PUMPGIRL (Irish Rep), ON THAT DAY IN AMSTERDAM (59E59), SUICIDE FOREST (Ma-Yi), MOLLY SWEENEY (Theatre Row), BEHIND THE SHEET (Ensemble Studio). Regional: Shakespeare Theatre Company, Berkeley Rep, Arena Stage, Steppenwolf Theatre Company, Milwaukee Rep, Capital Rep, Artists Repertory Theatre, American Repertory Theater, Long Wharf, Pittsburgh City Theatre, American Center Stage, Studio Theatre D.C., Two River Theater, Westport Country Playhouse, Williamstown Theatre Festival, Yale Rep, Huntington Theatre and Old Globe. Upcoming U.S. and Canada tour of KIM'S CONVENIENCE. Drama Desk, Helen Hayes, NYIT Nominations.

WHO'S WHO

Professor of Sound at Purdue University. Education: MFA, Yale School of Drama. www.fanzhangsound.com

TILLY EVANS-KRUEGER (Movement): Broadway Choreography Credits: JOHN PROCTOR IS THE VILLIAN. Off-Broadway Choreography Credits: Roundabout Theatre Company's JONAH and The Pershing Square Signature Theatre Center's EVANSTON SALT COSTS CLIMBING. Music Videos: "READY TO LOVE," Jojo; "GUARANTEE," Joshua Henry; "MY STONER GIRLFRIEND," Jason Schmidt; Tour choreography: TOO MUCH TO SAY TOUR. Film Choreography: MOVER directed by Jackson Jarvis. Associate Choreography: THE OUTSIDERS on Broadway

GIGI BUFFINGTON (Voice, Text & Dialect): Broadway: JOHN PROCTOR IS THE VILLAIN, GOOD NIGHT AND GOOD LUCK, CULT OF LOVE, EUREKA DAY, ROMEO + JULIET, STEREOPHONIC, THE OUTSIDERS, MOTHER PLAY, PRAYER FOR THE FRENCH REPUBLIC, GREY HOUSE, BETWEEN RIVERSIDE AND CRAZY, COST OF LIVING, THE MINUTES, CLYDE'S SLAVE PLAY (Remount), PASS OVER, LINDA VISTA, STRAIGHT WHITE MEN. Off-Broadway: LIBERATION, WALDEN, JONAH, KING JAMES, DOWNSTATE, EVANSTON SALT COST'S CLIMBING, CORSICANA, CATCH AS CATCH CAN, ON SUGARLAND, OUR DEAR DEAD DRUGLORD, HEROES OF THE FOURTH TURNING, DYING CITY, MARY PAGE MARLOWE. Screenplay Consultant: Spike Lee and Ron Wimberly's PRINCE OF CATS, One Season Royal Shakespeare Company, Eight Seasons Steppenwolf Theatre Company. Arts Professor, Tisch, NYU.

SAMANTHA SHOFFNER (Prop Supervisor): MCC: ONLY GOLD, NOLLYWOOD DREAMS, BLKS, THE END OF LONGING, RIDE THE CYCLONE. Broadway: YELLOW FACE, TROUBLE IN MIND, SLAVE PLAY (2019 & 2021), August Wilson Lobby redesign 2021. Over 80 Off-Broadway shows including: LIGHTS OUT (NYTW), WINE IN THE WILDERNESS (CSC), REFUGE PLAYS, MERRILY WE ROLL ALONG (Roundabout), BETWEEN TWO KNEES (PAC). Corporate: Freidman's decorator (31st), Google, X, Samsung, Grammys, Emmys, H&M. Production Design: LinkedIn, Yext, Sony, Novartis, NBCUniversal, BMW, Disney, Marvel, various shorts & features. Tribeca Filmfest '25 VILLA ENCANTO (Art Director), Sundance '24 THE HEART by Malia Obama (Specialty Props/Lead Set Decorator). Professor at Citytech, Props & Paint. Freelance Interior Designer & Artist. www.smartsetsbysam.com.

ANN JAMES (Sensitivity Specialist) made her debut as the first Black Intimacy Coordinator on Broadway for Pass Over. Broadway credits include: JOHN PROCTOR IS THE VILLAIN, SUNSET BLVD, LEMPICKA, HAMILTON, PARADE, EUREKA DAY, A WONDERFUL WORLD, ILLINOISE, SWEENEY TODD, HEART OF ROCK AND ROLL, THE OUTSIDERS, JELLY'S LAST JAM. Off-Broadway: LOVE LIFE, LOWCOUNTRY, DUKE AND ROYA, JAJA'S AFRICAN HAIRBRAIDING, INDIAN PRINCESSES, SUNSET BABY, JONAH, WHITE GIRL IN DANGER, HOW TO DEFEND YOURSELF, THE COMEUPPANCE, EVANSTON SALT COSTS CLIMBING, MY BROKEN LANGUAGE, THE

WHO'S WHO

HALF-GOD OF RAINFALL, HERE THERE ARE BLUEBERRIES, LIFE AND TRUST, THE LONELY FEW. Tour: HAMILTON UK. James was recently awarded a Special Citation from the OBIE Awards and The American Theatre Wing and has partnerships with The Juilliard School, Fordham University, Adelphi University, New York University, Columbia University, American Conservatory Theater, Brown University, Trinity Repertory Theater, A.R.T./New York, and The American Repertory Theater at Harvard.

AMANDA MILLER (Hair Consultant) is a wig hair and makeup design studio in union square NYC. Credits include : Broadway: CAROLINE, OR CHANGE, OLD TIMES, CYRANO DE BERGERAC (Roundabout Theater Company). NYCC Encores! TITANIC, HAMLET/ORESTIA (Park Avenue Armory), PRIDE AND PREJUDICE (Cleveland Playhouse), TWELFTH NIGHT (Folger Shakespeare Theater). Annie Baker's UNCLE VANYA, Young Jean Lee's LEAR (SoHo Rep), THE 3 PENNY OPERA, Ethan Cohen's HAPPY HOUR, THE NIGHT ALIVE, HARPER REAGAN (Atlantic Theater Company). WEST SIDE STORY, THE OTHER JOSH COHEN (Papermill Playhouse), Williamstown Theater Festival, Metropolitan Opera Company, "SATURDAY NIGHT LIVE", numerous other television series and feature films, and the artist Cindy Sherman.

SARAH CIMINO (Makeup Consultant) is a makeup artist and designer based in NYC. Design credits include: Broadway: REDWOOD; MOULIN ROUGE! THE MUSICAL; CAROLINE, OR CHANGE. Off-Broadway: PROSPEROUS FOOLS (TFANA), THE CONNECTOR (MCC), NUTCRACKER ROUGE, COCKTAIL MAGIQUE, SEVEN SINS, QUEEN OF HEARTS (Company XIV). Regional: GATSBY (A.R.T), NOTES ON KILLING... (Yale Rep). Makeup Consultant: THE COUNTERFEIT OPERA (Little Island), TITANIC (Encores! NYCC), R.O.S.E, DOPPELGANGER, HAMLET/ORESTIA, UPLOAD (Park Avenue Armory), UNEARTH (NY Philharmonic), RICHARD III (Public Theatre, SITP), ORATORIO FOR LIVING THINGS (Ars Nova). Sarah is a member of the Juilliard School's Drama Faculty and guest teaching artist for NYU's Graduate Acting dept.

ERIN GIOIA ALBRECHT (she/her) (Production Stage Manager): Previous MCC credits include: THE CONNECTOR, THE LIGHT, CHARM, PUNK ROCK, and THE VILLAGE BIKE. Broadway: STEREOPHONIC, A STRANGE LOOP, BULLETS OVER BROADWAY, MATILDA, BRONX BOMBERS, HANDS ON A HARDBODY. Other Off-Broadway: THE ANTIQUITIES, STEREOPHONIC, A STRANGE LOOP, WIVES, DANCE NATION, MANKIND, BELLA, A LIFE, MEN ON BOATS, MARJORIE PRIME, THE CHRISTIANS (Playwrights Horizons); INDIA PALE ALE (MTC); RED SPEEDO (NYTW). Regional: The Alley, Woolly Mammoth Theatre Company, The 5th Avenue, The Old Globe, La Jolla Playhouse. MFA: UC San Diego.

HOLLY ADAM (Assistant Stage Manager): Broadway: STEREOPHONIC. Off-Broadway: STEREOPHONIC, TEETH, IN THE AMAZON WAREHOUSE PARKING LOT (Playwrights Horizons). Touring: THE COMEDY OF ERRORS and TWO TRAINS RUNNING (The Acting

WHO'S WHO

Company). Regional: LA BOHEME, VANESSA, RUINOUS GODS (Spoleto Festival USA). University of Michigan. Love to Mom. @holly.adam

NICOLE JOHNSON / HARRIET TUBMAN EFFECT (Diversity, Equity & Inclusion). Nicole Javanna Johnson is the Founder of the Harriet Tubman Effect Institute, a human resource center and institute of research for dismantling systemic oppression. DEI Director and Consultant on PASS OVER, FREESTYLE LOVE SUPREME, INTO THE WOODS, SWEENEY TODD, IS THIS A ROOM, and DANA H., Lincoln Center and New York Theater Workshop. Proud DEI consultant of MCC shows from the 2023-2024 season including WALK ON THROUGH and THE CONNECTOR. www.harriettubmaneffect.com

THE TELSEY OFFICE (Casting) With offices in both New York and Los Angeles, The Telsey Office casts for theater, film, television, and commercials. The Telsey Office is dedicated to creating safe, equitable, and anti-racist spaces through collaboration, artistry, heart, accountability, and advocacy. Please visit thetelseyoffice.com for our credits.

ACTORS' EQUITY ASSOCIATION ("Equity"), founded in 1913, is the U.S. labor union that represents more than 51,000 professional Actors and Stage Managers. Equity fosters the art of live theatre as an essential component of society and advances the careers of its members by negotiating wages, improving working conditions and providing a wide range of benefits, including health and pension plans. Actors' Equity is a member of the AFL-CIO and is affiliated with FIA, an international organization of performing arts unions. Equity is governed by its own members through an elected Council, representing principal actors, chorus actors and stage managers living in three regions: Eastern, Central and Western. Members at large participate in Equity's governance through a system of regional Boards and Committees. Equity has 28 designated area liaison cities with over 100 members each. #EquityWorks



The actors and stage manager employed in this production are members of Actor's Equity Association, the union of professional actors and stage managers in the United States.



The Director is a member of the STAGE DIRECTORS AND CHOREOGRAPHERS SOCIETY, a national theatrical labor union.



Council on the Arts

OUR MISSION

“There’s no better life than a life in theater in New York City.”

—Bob LuPone (1946-2022), Founding Artistic Director

Our mission is to provoke conversations that have never happened and otherwise never would.

MCC THEATER was founded in 1986 as MANHATTAN CLASS COMPANY by a collective of young actors, writers, and directors determined to steer their own artistic development—and shake things up! That initial group included Artistic Directors **Bernie Telsey**, **Bob LuPone** and **Will Cantler**, since joined by Executive Director **Blake West**. Our increasingly expansive work continues today, in fond memory of Bob.

- **WE PRODUCE EXCITING THEATER.** We produce seasons of BOLD new plays and musicals by exceptional ARTISTS.
- **WE DEVELOP NEW WORK.** We develop NEW WORK by emerging and established artists through a rigorous process that encourages CREATIVE RISK-TAKING.
- **WE HONOR YOUNG VOICES.** Each year our education programs use the power of theater to ROUSE the imaginations of over 1200 high school STUDENTS across ALL FIVE BOROUGHs.
- **WE GET PEOPLE TALKING.** COLLABORATION and COMMUNITY are at the core of everything we do.

the CAST of THE CONNECTOR / photo by JOAN MARCUS



EDUCATION PROGRAMS

For 26 years, MCC Theater has held a series of intensive in-school and after-school education programs that now serve approximately 700 New York City public high school students each year, offering them a platform to be heard and the opportunity to speak their truth. The goal of this work is to celebrate and honor the mosaic of identities of New York City's young people and their experiences in a non-competitive and socially conscious environment.

MCC's Youth Company serves NYC high school students through the Performance Lab, Playwriting Lab, the Ambassadors, and Brooklyn Youth Company. Participants attend weekly meetings that focus on ensemble building, devising, and writing. Company members also attend professional productions around New York City and master classes with guest artists during school breaks throughout the year. Performance Lab and Brooklyn Youth Company culminate in an annual original collaborative production titled **UNCENSORED**. Playwriting Lab ends their program with the **FRESHPLAY FESTIVAL**, where young writers' new plays are shared by professional actors and directors in two days of play readings. Ambassadors meet monthly to gain a fuller understanding of the industry by learning about a broad range of theater professions and visit non-profit theaters across the city.

Through **Classroom Partnerships**, MCC collaborates with New York City public high schools to integrate sequential arts curricula into English, Art, and Social Studies classes. The schools participating during the 2024/25 season are the George Washington High School Educational Campus, Manhattan International High School, and the High School for Public Service, which also hosts the Brooklyn Youth Company.

Student Matinees make it possible for public schools with limited access to performing arts organizations to attend MCC productions.

JOIN US

MCC Youth Company Playwriting Lab's FRESHPLAY FESTIVAL: JUN 7



PUBLIC ENGAGEMENT

In support of our mission to provoke conversations, MCC has created a full suite of free public engagement programs serving over 1000 people annually that center our mainstage productions and the themes that those works address.

LET’S TALK: Post-show Talkbacks offer audiences an opportunity to ask questions of the cast and creative teams. In Post-show Audience Conversations audiences engage with one another in conversations about the play they have just seen.

LET’S ENGAGE: Open Forums and Workshops feature activities and subject matter that uplift issues highlighted in our mainstage productions and are designed to enhance engagement, giving participants an opportunity to reflect on the work.

LET’S WATCH: Community nights offer social opportunities before shows for audience members to connect with each other and learn more about resources available to artists throughout the city.

LEARN MORE

Introducing standalone workshop opportunities open to the public ages 14 and up, at accessible prices.

JOIN US

MCC THEATER’s Education Programs are supported by Axe-Houghton Foundation, Cornelia T. Bailey Foundation, Emily Davie and Joseph S. Kornfeld Foundation, Find Your Light Foundation, Harold J. Newmant & Ruth Newman, the Eric Rosedale Playwriting Fund, Tiger Baron Foundation, New York State Council on the Arts, and public funds from the New York City Department of Cultural Affairs in partnership with the city council.



THE ROBERT W. WILSON MCC THEATER SPACE

Inaugurated on JAN 9, 2019, MCC's Hell's Kitchen home, **THE ROBERT W. WILSON MCC THEATER SPACE**, is a state-of-the-art complex designed for us to do what we do best: shake things up. The space houses two theaters, two rehearsal studios, extensive backstage facilities, administrative offices, and ample audience amenities.

THE NEWMAN MILLS THEATER is named for Ruth & Harold[†] Newman and Marianne & Steve Mills. As dedicated co-chairs of The Campaign for MCC THEATER, they led a successful fundraising effort in support of MCC's education and artistic programs.

THE SUSAN & RONALD FRANKEL THEATER is named for Susan & Ronald Frankel. They have been active with the company since 2015. Susan Frankel is also an MCC THEATER Board member.

ROBERT W. WILSON was a well-known and successful investor from the mid-1960's to the mid-1980's. After retirement, he devoted his life to philanthropy. He was a transformative philanthropist, primarily funding worldwide organizations in the preservation and conservation areas. An avid New Yorker, he was also involved with a number of New York's cultural institutions. He was a major supporter of, and held leadership roles with, the Brooklyn Botanic Garden, Environmental Defense Fund, The Metropolitan Opera, the Whitney Museum, and the World Monuments Fund. In addition, he and the Trust continue to support the above institutions and The Nature Conservancy, The New York Public Library, Central Park Conservancy, BAM, and the Wildlife Conservation Society.



LAND ACKNOWLEDGMENT

MCC THEATER wants to center our event in practices rooted in fostering community. We acknowledge how the PAST and the FUTURE converge on our PRESENT. MCC'S theater home sits on the UNCEDED land of the LENAPE people. We acknowledge that this stolen land was worked on by enslaved Africans. May this living land acknowledgement—to the LENAPE, their elders past and present, and their future generations, as well as to the experience of enslaved Africans and their descendants, serve as a starting ground for change.

PATRON PROGRAM

Every Patron is treated to....

- **PERSONALIZED TICKET SERVICE**—we reserve the best seats for you.
- **EARLY ACCESS** to information about casting, special events, and future programming.
- **YOUR PERSONAL INVITATION TO POST-SHOW PATRON EVENTS** to meet the cast, talk to the artistic leadership, and be a part of the conversation with other Patrons.
- **THE CHANCE TO ATTEND PRIVATE READINGS** and other exclusive special events.
- **A TAX DEDUCTION** for supporting our work.

MCC is a nonprofit, and we count on our Patron community to support the work behind the work. Your tax-deductible contribution helps us...

- **PRODUCE** vital new plays and musicals.
- **DEVELOP** new work by the next generation of theater artists.
- **CHANGE** the lives of nearly 1,200 NYC public high school students each year.



Learn more at patrons@mcctheater.org,
(212) 727-7722 ext. 233

WE SAVED YOU A SEAT

Commemorate
your support of
MCC THEATER
with a seat in the
Newman Mills Theater.

Standard seats begin at \$1,500 per seat.
For more information about seat naming,
please contact Kristina Dizon at
kdizon@mcctheater.org or (212)727-7722 ext. 212

STAFF FOR TROPHY BOYS

| | |
|---|---|
| Company Manager | Frances Ramos |
| Assistant Production Manager | Julia Sprung |
| Production Assistant | Huai Huang |
| Assistant Director | Ellie Frances |
| Assistant Scenic Designer | Michael Ruiz del Vizo |
| Assistant Costume Designer..... | Amelia Dent |
| Assistant Lighting Designer..... | Jiahao Qiu |
| Associate Sound Designer | Megumi Katayama |
| Hair Consultant..... | Amanda Miller |
| Makeup Consultant..... | Sarah Cimino |
| Fight Consultant..... | Dave Anzuelo |
| Technical Director | Robert Mahon III |
| Deck Carpenter | Sean George |
| Carpenters..... | Stephen Adler, Tait Alcivar, Will Burton, Juan Castro, Nate Chaves, Sean George, Ryan LoPresti, Taylor Simmons, Bobby Zevack |
| Costume Shop Manager | Caitlin Dixon |
| Wardrobe Supervisor | Sherry Martinez |
| Stitchers..... | Celestine Cervantes, Dara Fargotstein |
| Production Audio..... | Max Baines |
| Sound Board Operator..... | Emery Cohen |
| Audio Crew | Emery Cohen, Katie Mayfield, Zach Sherman |
| Production Electrician | John Tees III |
| Lighting Programmer | Adam Rose |
| Light Board Operator | Aaliyah Stewart |
| Lighting Crew | Jordan Acosta, Millie Cowan, Jamie Crockett, Graham Darnell, Katherine Dumias, Ben Free, Jarrod Fries, Deric Gerlach, Fiona Govin, Sara Hansen, Lily Koller, Diane Tees, Penny White |
| Props Associate..... | Jared Castelblanco |
| Prop Carpenters..... | Mike Berlant, Rudy Gurrero, Michael Torres |
| Prop Drivers..... | Adam Morales, Christoph Schultz |
| Prop Assistant..... | Natalie Lay |
| Key Art Design | The Numad Group |
| Archival & B-Roll Video..... | Bardo Arts |
| Scenery..... | Tom Carroll Scenery |
| Lighting Rental..... | PRG |
| Sound Rental | Masque Sound |
| Social Media & Influencer Marketing | Carly Heitner, Our Time Influence |
| Physical Therapy | Spear Physical Therapy |

CASTING

Charlie Hano, CSA
Crysilyn Childs

ADDITIONAL CREDITS

“Grind with Me”

Written by Marcus Cooper, Corey Mathis, Diamond Smith, SPectacular Smith, Derrick L. Baker, Homer Banks, Carl Mitchell Hampton, Raymond Earl Jackson & James Scheffer Warner-Tamerlane Publishing Corp. (BMI) OBO Bleu Carrot Diamond Publishing, Blue Star Publishing, Marco Bleu Publishing, The Nickel Publishing and SilverPlatinumy2K All rights reserved. Used by permission.

SPECIAL THANKS

Creative Partners Productions, Daryl Roth Productions, Sonia Friedman Productions, Cathy Dantchik, June Cooperman, Eileen & Andrew Fisher, Samantha Squeri, Alex Wolfe, Brandon Zamudio, Amanda Harper, The Prince Fellowship, Shubert Artistic Circle, Mike Rush, Jenn Edlin, Hal Luftig, and Connor Stribling

MCC THEATER STAFF

| | |
|--|--|
| Artistic Directors..... | Bernie Telsey, Will Cantler |
| Executive Director | Blake West |
| Co-Founding Artistic Director..... | Bob LuPone, 1946 – 2022 |
| General Manager | Beth Dembrow |
| Associate General Manager..... | Brendan McNamara |
| Company Manager | Frances Ramos |
| Audience Services Manager | Josué Hernández |
| Box Office Staff..... | Paola Hernández |
| House Managers..... | Jenyvette Vega, Mike Velez |
| Assistant House Managers..... | Branden Mangan, Eli Martinez, Leandra Torres |
| Ushers..... | Nataly Almanzar, Ann Felix, Ally Ibach, Lena Jackson, Judy Jimenez, Claire Prohaska |
| Administrative Assistant..... | Hannah Hernandez |
| Director of Finance | Linda Wong |
| Finance & Business Manager..... | Laura Knutzen |
| Manager of Artistic Development..... | Elissa Huang |
| Manager of Musical Programming & Development | Scott Galina |
| Director of Production & Facilities..... | Steve Rosenberg |
| Facilities Manager..... | Steve Hail |
| Costume Shop Manager | Caitlin Dixon |
| Associate Director of Development | Vinny Martini |
| Development Consultant..... | Sandra Davis |
| Development Consultant..... | Lauren Siff Siegel |
| Manager of Institutional Giving..... | Carrie O’Dell |
| Special Events Coordinator | Kayla Campise |
| Development Operations Coordinator | Kristina Dizon |
| Special Events & Projects Assistant..... | Jennifer Pillaga |
| Outbound Fundraising Consultant | Kel Haney |
| Outbound Fundraising Team | Giuliana Carr, Sam Hood Adrain, Alessandra Migliaccio, Keith Weiss |
| Director of Marketing & Communications | Abigail Langsted |
| Graphic Design & Videography..... | Ted Stephens III, The Numad Group |
| Press Representatives..... | Print Shop PR |
| Director of Culture & Learning..... | Meggan Gomez |
| Manager of Public Engagement & Education | Philipe AbiYouness |
| Public Engagement & Education Coordinator | Dom Martello |
| Brooklyn Youth Company Collaboration Lead | Liz Morgan |
| Youth Company Performance Lab Collaboration Lead..... | Kareem M. Lucas |
| Youth Company Playwriting Lab Collaboration Lead | Juan Ramirez Jr. |
| Senior Teaching Artists..... | Raphael Peacock |
| Teaching Artists | Dahlia Ramsey, Marissa Stewart |
| Youth Company Alumni Fellow..... | Colin Casey |
| Janitorial Staff..... | Impressive Cleaning Services Inc. |
| Concessions..... | Sweet Hospitality |

BOARD OF DIRECTORS

Marianne Mills, *Chair*
David Lloyd, *Vice Chair*
Devashish Jain, *Treasurer*
Robert J. DiDiano, *Secretary*
Susan Raanan, *Chair Emeritus*

Will Cantler
Kareem Crayton
Barbara Doran
Nicole Eisenberg
Melvin Epstein
Susan Frankel
Cathy Glaser
Peter Hedges
Claudia Newman Hirsch

Beth Klein
Judith Light
Neil S. Mitchell
Cesar Rocha
Jodi Schneider
Bernie Telsey
Lois Weinroth
Blake West

MCC COUNCIL

Peter Dolchin
Iliana Guibert
Deborah Heineman
Jordan Hyatt

Jenny Jones
Marina Marcoux
Kristine Louis Reynal
Jill Surdyka-Kim

FOUNDATION AND GOVERNMENT SUPPORT

\$100,000+
Howard Gilman Foundation
The Shubert Foundation

\$50,000-\$99,999
Emily Davie and Joseph S.
Kornfeld Foundation
MacMillan Family
Foundation
New York City Department
of Cultural Affairs in
partnership with the City
Council
Harold and Mimi Steinberg
Charitable Trust

Tiger Baron Foundation, Inc.

\$25,000-\$49,999
Giving Bee Family
Foundation
Laurents/Hatcher
Foundation
New York State Council on
the Arts
Richenthal Foundation

\$10,000-\$24,999
Cornelia T. Bailey
Foundation

Blanche & Irving Laurie
Foundation
Burton A. and Sandra D.
Zipser Foundation
Tow Foundation

\$5,000-\$9,999
Axe-Houghton Foundation
Find Your Light Foundation
Lucille Lortel Foundation
NYSCA/TDF TAP Plus

\$500-\$4,999
Actors’ Equity Foundation

List as of 5/21/25

PRODUCER’S CIRCLE

Thank you to our generous Producer’s Circle level & above supporters who provide major support of our mission to provoke conversation among artists, audiences and students. Members receive benefits that provide exclusive access to the process of making theater at MCC and follow a play’s journey from the page to the stage. To learn more, please contact Vinny Martini at 212-727-7722 ex. 205 or vmartini@mcctheater.org.

\$10,000+
Anonymous
Jyoti Agarwal, Pooja
Agarwal Doshi, &
Anne Kloimwieder
Liz Armstrong
Jayne Baron Sherman &
Deby Zum
Robert Boyett

Colbert Family Fund of
Coastal Community
Foundation of SC
Kareem Crayton
Kevin Cornish
Carol G. Deane
Robert J. DiDiano
Valerie DiFebo &
Dixon Byrne

William W. Donnell
Barbara Doran
Nicole & Stephen
Eisenberg
Rachel & Melvin Epstein
Susan & Ronald Frankel
Alice & Bruce Geismar
Cathy Glaser &
Steve Semlitz

Jessica & John Greenwood
Russel Hamilton
Dede Harris
Peter Hedges &
Susan Bruce
Claudia & David Hirsch
Devashish Jain &
Marc-Antoine Denechaud
Beth Klein
Gina Leonetti
Judith Light

Mel Litoff
David L. Lloyd &
Meg Mortimer
Nancy Molesworth
Marianne & Steven Mills
Shelly & Neil S. Mitchell
Susan Raanan &
Robert Fleischer
Steve Richardson &
Kirk Rubi
Eric Rosedale

Jodi & Marc Schneider
Brooke Adams &
Tony Shalhoub
Martin Small
Pam & Larry Tarica
Aimee Telsey &
Richard Friesner
Lois Weinroth

List as of 5/21/25

MCC SUPPORTERS & PATRONS

We are deeply grateful to all our generous donors and members of our Patron & Friends Programs, who provide vital annual support for our programming on and off stage, our education, and public engagement initiatives, and so much more. For more information on making a gift to MCC or joining the Patron Program, please visit mcctheater.org/support or contact patrons@mcctheater.org or (212) 727-7722 ex 233.

\$5,000-\$9,999

Anonymous (2)
Jodi & Craig Balsam
Linda & Mel Brosterman
Jennifer Diamond
Noah Eisenberg
Stephen & Nancy Gabriel
David Govaker
Adam Guettel
Jordan Hyatt &
Peter Dolchin
Tina Johnson-Marcel
Jenny Jones
Sharon Kirschner
Henri Koenisberg
Judith & Douglas Krupp
Irwin S. Scherzer
Foundation
Marina & Bill Marcoux
Belinda Neumann-Donnelly
Brette Popper &
Paul Spraos
Dr. Robert Press
Todd Rubin
Sherry Steiner Schwartz
Wendy Vanden Heuvel
Catherine & Jonathan
Wachtel

\$3,500-\$4,999

Anonymous (3)
Zach Aaronson
Earl Grey Camm
Suman Chakraborty
Elizabeth Columbo
Michael Dellangelo
Aric Dershem
Joan Weingarten &
Bob Donnalley Gift Fund
Deborah & Ronald
Eisenberg Family
Foundation

Sheri Feigen
Niegel Remington
Amy & Frank Garrison
Judith A. Garson &
Steven N. Rappaport
Andrea Gellert
Alfred Giordano
Rebecca Goldring
Robyn Goodman &
Anna Louizos
Iliana Guibert
Sophie Hughes
Meagan Jones
Nicky Jones
Candy & David Kultgen
Kristin McCollum
Jill Cordle Mont & Ira Mont
Rosemary Newman
Judy & Bennet Schonfeld
Randi Sellinger
Rabbi Barton &
Jane Shallat
Jane Stanicki
Jill Surdyka-Kim
Judith Sykes & Fred Seid
Mitchell & Laurie Telsey
Gretchen Varga
Ellie & Dan
Mary Beth & Alan Wilmit
Leatrice Wolf
Scott Wolfe Jr.

\$2,000-\$3,499

Anonymous (15)
Anne & Andy Abel
Noah Aberlin
Catherine Adler
Productions
Kim & David Adler
Hillary & Howard Albert
Tarell Alvin McCraney
The Angelson Family
Foundation

Steve Aripotch &
Bruce Jones
Susannah & David Bailin
Gwen Barnes
Heidi Bender
The Berkson Family
Stacee & Jeff Bernstein
Monty Blanchard &
Leslie Tcheyan
Louise Blaney
Michelle May & Brian Blath
Jane Borg
Fran Berrick
Lindsey & Thomas Boyd
Stuart Breslow
Meg & Neil Brisson
Andrea Brown &
Robert Levande
Einat & Ram Burshtine
Mary-Mitchell Campbell
Charlie & Libby Capuano
Steven Carlson
Linda & Arthur Carter
Debra Cassara
David Cennimo
Howard & Sharon Charles
Cathy Chernoff
Mary Cirillo-Goldberg
Amy Cohen & Sid Levinson
Jennifer Sheridan &
Jesse Cohen
Patti & Harvey Cohen
Paul Colaizzo
The Coleman Family
Andrea Collins
Erin Collins
Joanna Costantino
Elizabeth Cuthrell
Costa & Katherine Darras
Cathy Dault
Dr. Irene Rosner David, in
Memory of Dr. Raphaël
David

| | | |
|----------------------------|--------------------------|----------------------------|
| Paul & Jenny Diamond | The Katz Family | Ilona Nemeth |
| Mary Davis & MBL | Roberta & Kim Kelly | Sheila Nevins |
| Productions | Joanne Kennedy & | Erica Newman |
| Cathy Deckelbaum | Rich Collins | Susan & David Noonan |
| Scott Didonna | Fern Kershon | Richard C. Norton & |
| Susannah Doherty | Elizabeth King | Gary Schocker |
| Craig S Dorfman | The Klena Family | Howard Oestreich |
| Susan & Todd Eckland | Deborah Kopinski | Eileen O’Hern Luby |
| Susan Edelstein | Amy Kron | Sarah O’Neill |
| Diana Elghanayan | Sylvia Kurinsky | Michael Oosterhout |
| Karen Elizaga | Patricia Kurtz | Matt Oprendeck & |
| Roni & Ethan Eller | DeHunte-Lantigua | Eric Doescher |
| Michael L Emmel | Household | Marcie & Rob Orley |
| Ronald Englert | Wink Public Relations | Ellen Ozur & Stuart Brown |
| Alice Ericsson | Lynn & Kevin LaPierre | Gabrielle & Michael Palitz |
| Stephen & Peggy Falanga | Patty Laxton | Adam Parrish |
| Nancy Feldman | Jon LaPook & Kate Lear | Pamela Pasquale |
| Eileen Fink | Heather LeClair | Matt Pearson - Marron |
| Steven Fink & | Michelle & Will Leicht | Foods |
| Karen Schrift | Amy Leissner-Spears & | Jerilyn & Brian Perman |
| Ellen Fleysher | Andrew Spears | Marla Persky & |
| Georgianna Forbes | Dr. & Mrs. Allen Levine | Craig Heberton |
| Kathy Frankovic & | Jan & Rachel Levine | Tracey Pontarelli |
| Hal Glatzer | Steve Levitan | C. Poole |
| Jill Furman | Mac & Mary Lewis | Kim Powers |
| Felice Zwas & Sarah Gallen | Elizabeth Lewis | Mindy Propper & |
| Lynn George | Leslie Lewit-Milner & | Fred Duchin |
| Maria Giacchino & | Dr. Lawrence Milner | Corey Rabin |
| Tom Pescherine | Kurt Liphardt | Jennifer & David |
| Amy & Abe Glass | David & Deborah | Rabinowitz |
| Charles & Heather Golden | Livingstone | Gale Raspen |
| Michael Goldfarb & | A A Lobelo | Elizabeth Rees |
| Hanspaul Makkar | Stephan Loewentheil & | Mindi Reich-Shapiro |
| Carolyn Goodman | Natalie Wolfman | Robin Reinach |
| Carol Schiro Greenwald, | Lisa Lowe & David Lipsky | Fritz Reuter |
| PhD; In Memory of | Jane Macan | In Honor of Ronald O. |
| Karen Kayser-Benson | Linda MacKinnon | Jacobson |
| Mark Greenwald | Reeva & Ezra Mager | David Rockwell |
| Carol & Steve Gutman | Leonard Majzlin | Kristine Louis Reynal & |
| Allison Hadar | Barbara Manocherian | Max Reynal |
| Bradley Hames | Judith Manocherian | Judith Eve Rosen, LCSW |
| Susan T. Harris | Nina Matis | Cathy & Michael Rosen |
| Kris Heinzelman | KC Maurer | Susanne Rostock |
| Greer Hendricks | Amy McIntosh & | Howard & Joan Rothman |
| Pamela & Jonathan Henes | Jeff Toobin | Faith Ryan |
| James Higgins | Francie McKenzie | Brian Saliman & |
| Rachel Hobart | Ken & Annette McTigue | Larry Matthews |
| Stephanie & Ross Hobbie | Patricia Meadow | Peggy Schmitt |
| Doug Johnson & | Michael Mealiffe & | Miriam Schneider |
| Jamie Hubbard | Dean Pitchford | Darrel Schoeling & |
| L. Keith Hughes | Joyce Menschel | Jeff Corbin |
| Rachel Hutchinson | Lisa Melmed | Christine & Jennifer |
| Sally & Robert Huxley | Kory Merten | Schoppe |
| Mark Jacobson, D.D.S. | Joseph Messina | Steven Schreiber & |
| Karen Johnston | Marcia Pizzo | Amy Lorowitz |
| Dr. James Jones | Kelly & Blake Miller | Roger Schwed & |
| Robin A. Jones | Ann Miner | Laura Dukess |
| Sarah L Jones | Madison Mohn | Howard Sendrovitz & |
| Georgann Joseph & | Jennifer Morrow | David Sinclair |
| David Marker | Deborah & Ivan Moskowitz | Andrea & Mark Seiden |
| Gregory & Mary Juedes | Harvey Motulsky & | Niki & Tony |
| Isabel Kallman | Lisa Norton-Motulsky | Ms. Barbara Shulman |
| Jonathan Kanovsky | Stephen Murphy | Barb Shum |
| Ron Kaplan | Abigail Murray & | Sue Simon |
| Paula Katz | Brad Seiler | Stephanie Simon |

Tricia Small
Marilyn Sobel & Ben Cohen
Michael & Alexis Somers
Dr. Carolyn Springer
Samson Staff &
 Caroline Shehan
Mark Stein
Cheryl M. Sternberg
Rebecca & Jeremy
 Sussman
The Carse Family
Jenni Swan
Kimberly Taylor &
 James Gale
Suzanne Telsey &
 Steven Bennett
Superqueer Tzedakah Fund
Trustman Family
Lacey & Cheryl Tucker
Dashiell Rucka
Lanore Wadsworth
Linda & Daniel Waintrup
Deborah Wallach
Robin & Leigh Walters
Kristen Wedel
Dr. Terry Weill
Margie & Brian Weingarten
Rachel Weinstein &
 Jason Pizer
Jill Weissman
Maureen & Steven Rattner
Patricia & Mark Willis
Richard Winkler
Billy Wong &
 Stephanie Gordon
Lisa Wright
Jackie Yellin
Roy Youman & Juliet Borja
Amy & Jared Zerman
Rachel Ziemba
Courtney Zimmer

\$1,500-\$1,999

Randy Adams
Molly Bass
Donna Chirico
Liz Curtis, Wild Geese
 Productions
Camille Diamond
Karen Dukess &
 Steve Liesman
Marian & Robert Klein
Jan & Cary Lichtenberg
Dan & Lisa Miller
Terry Nardozzi
Barbara Schnitzler
Stewart Alden Tabler

\$1,000-\$1,499

Anonymous (3)
Marie & Jim Anderson
Mark Beatt
Rachel Berg
Elizabeth Berman
Alice Boyne

Susan Bram
Stephen Breimer
Linda S. Burrows
Rebecca J. Cheeks, PhD
Emily A. Chen
Nina Cheney
Reid Clarke
Peter Cole
David Zayas &
 Liza Colón-Zayas
Jennifer B. Crowl
Carlito's Way
Isabel Davis
Kevin Dean
The Deary Family
Christine Denham
Ru DePaoli
Mark Dixon
Jennifer Ely
Chelsea Field
Jeremy Fitzgerald
Allison Fortunati
Dona Gilbertson
Debby Goldberg
Melinda Halpert
Monica Halpert
Kirsten Hatfield
Molly K. Heines &
 Thomas J. Maloney
Donna Heppermann
Cle Holly
Alexander Huynh
Eileen Jarrett
Jamie & Laurie Jaxon
Lloyd Khaner
Kay Kimpton
The Klenkes
Simona & Scott Krawitz
Natarajan Krishnaswami
Kathryn Lagana
David Landis
James Lapine
Kwok Lau
Jolene Lavine
Deirdre LeMire
Kenny Leon
Francine Levine
Beth Levine
Little Bear Lindsley
Bob & Alicia Wyckoff
Molly MacDermot
Adam MacLean
Frank Malinoski
Jody Mansbach
Jessica Mastronardi
Peter McKown
Ann Mellow
Virginia &
 Timothy Millhiser
Brian & Susan Moore
 Family
Kathleen O'Grady
Rob Silverstein &
 Wanda Olson
Marissa Osowsky

The Peterson Family
Dante Petrocchi
Martha J. Radford
The Reiffman Family
Kathleen Rodenberg
Ira Sachs
Murray & Brenda Schane
Daniel Scheffey
Ira Schreck
Tysha Scott, In Memory of
 Phillip R. Scott Esq.
Sarajane Sein
Ainka Shackelford
Sam & Jesse Shapiro
Carolyn Sicher
Roy Markell
Richard & Judith
 Silverman
Betsy Simons
Barbara Madsen Smith
Ray St. Claire
Ken Staffey
Ted Stephens III
Ellen Stewart, Pushy Broad
 from the Bronx®
Heidi Stroessner-Johnson
Anthony Sweeney
Nancy Swiezy
Dr. Moovesa aka Victor
 Talbot MD
Marsh
Joe Tippet
Twinkle Fairies The Book
Michele Tortorelli
Patricia E. Vance
Juli Vitiello
Deborah Walker
Victoria Wanser
Meghan & Scott
 Wasserman
Jennifer Powderly
Susan & Jim Westerman
Sharon Wickes
Chris Plaut & Nancy
 Winkelstein Plaut
Elizabeth Wiseman &
 Deborah Shutt
Fred Wistow
Jennifer Woodruff
Ellen Wright
Debbie Young
Paul Zagardo

\$250-\$999

Anonymous
Christopher Abreu Rosario
Whitney Anne Adams
Elyse Alper
Ann Altoonian
Jill Andringa
Carl Baldasso
Peter Barsocchini
Wendy Basile
Kendrick Basso
Karen D. Baynard

Louis Blachman
David Blews
Stephen Bray
Patrick Briggs
Craig Burns
Claverton Theatre Club
Steven Byer
Theresa Casaletta &
Joseph Borrelli
Alan Ceppos
Joseph Chase
Shari Citak
Anna Coatsworth
Amanda Coccozza
Lawrence D. Cohen &
Michael Gore
Angelique Cook
Stephanie Cook
Suzette Corrado
James Costa
Michael Cudney
Alma E Cuervo
Deborah Daniell
Jay Darden
Dari DeCinque
Deborah Doroshow
Deborah Eastburn
Mary Joyce Ebmeier
Joseph English
Paula Fagan
Halley Feiffer
Frank Fekete
Allen Feldman
Ken & Caryl Field
Peter Filiaci
Paul Fisher
Elin Flack
Joan Flanigan
Vicki Foley
Tom Fox
Matt Freeman
Tracy French
Steven Froot &
Mary Ann Doyle
Anne Cantler Fulwiler
Sara Garcia
Linda Garcia
Stacy Garn
Yvette A. Geary
Nancy Nagel Gibbs
Nancy Ginsburg
Jim & Sue Given

Tracey Glancy
Marcia Goldberg &
Paul Garrity
Barbara Goldstein
Rose Gordon
Michael Gore
Kimberly Grigsby
Andy Griswold
Robert J. Hall
Jonathan Greenwood
Harrison
Julie Heinrich
Soledad & Jose Hiciano
Lynne Howard
Elyse Hunt-Heinzen
Haley Huxley
Mike Isaacson
Barbara Janowitz &
Peter Entin
Mercy Ji
Erica Kane
Randy Kaplan
Adele Karig
Jeremy Kaufman
Jared Kaye
Debra Keenan
Jay Kennedy
Karen Kennedy
Devin Keudell
Zachary Kline
Nathan Koch
Frank Krug
Peter Kuzma Jr.
Nicole Lafontaine
Amy Larkin
Michelle Lederman
Anki Leeds
Samantha Leenas
Lorie Cowen Levy &
Charles J. Levy, Jr.
Ellen Lewis
Anya Liberman
Claire Lieberwitz, In Loving
Memory of Arthur Grayzel
Amy & Frank Linde
Randy Mandel
Norm Meyrowitz
Rob Mish
Maggie Moroff
Dan Napolitano
Dora Naughton
Jeanne Nicolosi

Carolyn Norman
Susan Nussbaum
Tosan Oruwariye
Carol Ostrow
Wendy Ouellette
Robert Parrott
Pamela Pasquale
Tasia Pavalis
Meryl Pearlstein
Jenny Peek
Edward Phillips
Barbara Pilnick
Joseph Plese
Phyllis Posnick
Chef Yono & Donna
Purnomo
Robert Pyrka
Michael Racioppi
Hillary Reinis
Valerie Rennert
Teresa and Jon Richman
Amy Ritchie
Donald W. Roeseke Jr.
Alana Rubin
Bette Samuel
Chris Schwyter
Steve Shane
Yuzi Shang
Anita Siegel
Randi Singer
Pat Skipper
Linda SooHoo
Steve & Gail Steiner
Adam Stern
Henry & Jo Strouss
Kelly Stuart-Johnson
Jennifer Sucov
Cathleen B Sullivan
Roland Tec
Albert Telsey
Michael Templeton
Betty & Jon Tilley
Emanuel Tsourounis II
Faryn Riley Valdez
Michael Weller
Andrew M. Wentink
Melanie Weston
Christopher Williams
Karen Williams
Jerry Zaks

List as of 5/21/25

MISCAST SUPPORT

This year, we celebrated the 25th Anniversary of MISCAST at the Hammerstein Ballroom, and produced a free online broadcast for viewers around the globe! We’re so grateful to all of our donors who supported us and helped us commemorate 25 years of this worldwide phenomenon. We’ll be back next year for more unforgettable performances with MISCAST26, and we hope you’ll be able to join us!

DIAMOND VICE CHAIRS

Susan & Ronald Frankel
The Julis Romo Rabinowitz
Family
In Honor of the 95th
Birthday of Thelma
Rabinowitz Julis
Tiger Baron Foundation

PLATINUM

Robert DiDiano
Nicole & Stephen Eisenberg
Cathy Glaser &
Steven Semlitz
Marianne & Steven Mills
Liz & Ken Whitney

GOLD

Claudia Newman Hirsch &
David Hirsch
David L. Lloyd Jr. &
Meg Mortimer
Eileen O’Hern Luby

SILVER

Baseline Theatrical
Death Becomes Her
Melvin & Rachel Epstein
Hamilton
Devashish Jain &
Marc-Antoine Denechaud
Beth Klein
Michael Patrick King
Maybe Happy Ending
Shelly & Neil Mitchell
Lori & Michael Nash
Hal & Ruth Newman
Education Fund
Matthew Rooney
Jodi & Marc Schneider
Stephen & Amy Sills

BRONZE

Anonymous
Matthew Hui

Angie Lutz
No Guarantees Productions
Oh, Mary!
Othello
Sunset Blvd.
Lois Weinroth
Wells Fargo Advisors &
Wells Fargo Private Bank

PRODUCERS

Mel & Linda Brosterman
Judith Garson &
Steven Rappaport
Ruth & Stephen Hendel
Amanda Lipitz
Susan Lichtenstein &
John Rokacz
Dean Pitchford &
Michael Mealiffe

PLAYWRIGHTS

Catherine Adler
Suman Chakraborty &
Joseph Shrope
City National Bank
Jamie deRoy
Jill Furman
Chelsea Kellogg
Rachel Masch
Barbara Manocherian
Paul Morrissey
The Movado Group
Operation Mincemeat
Susan Raanan &
Robert Fleischer
Fiona Rudin
Jac Scheiner
Sherry Schwartz
The Shubert Organization
Helene Stein
Catherine & Jonathan
Wachtel

DIRECTORS

Bank of America Private
Bank

Jane Bergere
Loraine Boyle
Broadway Video
Ron Chavira & Cory Sweat
Carolyn Collier
David Crane &
Jeffrey Klarik
Kareem Crayton
Creative Artists Agency
Davis Wright Tremaine LLP
Kurt Deutsch
Valerie DiFebo
Peter Dolchin &
Jordan Hyatt
Barb Doran
Roy Furman
Stephanie Furst
Debbie & Mark Kopinski
Deborah Heineman
Jen Hoguet
Jenny Jones
Marsha Kaplan
Iliana Guibert
Glenn Gunderson
Arlene Lavitt
Peter McKown
Amy McIntosh
Joseph Rokacz &
Lawrence Gordon
Linda Rubin
Laura Santisi &
Richard Johnson
Jill Surdyka-Kim
Barbara Shulman
Jenni Swan
Jodi Sweetbaum &
James Carse
Frederick Taylor
Jennifer Thomas
TodayTix Group
United Talent Agency
Harvey Young

List as of 4/1/25

THE CAMPAIGN FOR MCC THEATER

MCC THEATER is proud to thank everyone who has supported the Campaign for MCC THEATER. You helped make our dream of a home of our own a reality. Our new home allows us to deepen our mission and encourage greater collaboration amongst all of our artists, students, and audiences.

Special thanks to The Office of the Mayor of New York City, Eric Adams; The New York City Department of Cultural Affairs, Commissioner Laurie Cumbo; The New York City Council, Speaker Adrienne Adams; and the Office of Manhattan Borough President, President Mark D. Levine, for their dedication to the arts and their foundational support for this project.

\$1,000,000+
Ruth & Harold Newman†
The Gary Platt Initiative for New Musicals*
The Robert W. Wilson Charitable Trust

| | | |
|--|--|--|
| \$500,000-\$999,999 Susan & Ronald Frankel Cathy Glaser & Steve Semlitz Howard Gilman Foundation Marianne & Steven Mills Steve Richardson & Kirk Rubi Ms. Barbara Shulman Amy & Stephen Sills Elizabeth & Ken Whitney | Claudia & David Hirsch David L. Lloyd, Jr. & Meg Mortimer Reeva & Ezra Mager Shelly & Neil Mitchell Erik Piecuch & Alex Bong Wright Marilyn Sobel & Ben Cohen Sheila Steinberg Pam & Larry Tarica Lois Weinroth Janine & Jonathan Whitney | Leslie Larson & Don Katz Stephanie & Ron Kramer Lorie Cowen Levy & Charles J. Levy, Jr. Dr. & Mrs. Jerome & Elizabeth Levy John Lewin & Margie Becker-Lewin Virginia & Robert LuPone† Bruce MacAffer Marina & Bill Marcoux William Megevick Shelly & Neil Mitchell Robert & Fulvia McCrie William Megevick & George Calderaro Leslie Lewit-Milner & son, Jacob Lewit Dahlia Neiss & Family Anh-Tuyet Nguyen† & Robert Pollock Brette Popper & Paul Spraos Dr. Robert Press Kristine Louis Reynal & Max Reynal Roselle Baldwin Productions Sherry Schwartz Niki & Tony Ted Stephens III Jenni Swan Bernard Telsey & Anne Marino Suzanne & Aimee Telsey Ellie & Dan Fund Joan Weingarten & Bob Donnalley Gift Fund Patty & Mark Willis |
| \$100,000-\$499,999 The Bonnie Cashin Foundation Dr. Gail Furman† Roy Furman, Jill Furman and Stephanie Furman Darrow The Garson Rappaport Family The Blanche & Irving Laurie Foundation Gina Leonetti Susan Raanan & Robert Fleischer Eric Rosedale Playwriting Fund Rosemarie & Lou Salvatore† | \$10,000-\$24,999 Lewis G. Cole Ann Dickinson & Richard Purington Liz Armstrong Maureen & Bill Barton Brenda & David Bass Karen Kayser Benson† Linda & Mel Brosterman Jan & Will Cantler Elizabeth Columbo Katherine & Costa Darras Brian Davidson & Michael Schultz Carol G. Deane Robert DiDiano Barbara Doran Jody Falco & Jeffrey Steinman Cynthia & Herbert Fields Amy & Frank Garrison Mary Cirillo-Goldberg & Jay Goldberg† Peter Hedges & Susan Bruce Doug Hughes Jordan Hyatt & Peter Dolchin | |
| \$25,000-\$99,999 Marjorie & Fredric Altschuler Javan Thomas Bunch Burnt Umber Productions Rachel & Melvin Epstein Emma A. Sheafer Charitable Trust Lori & Edward Forstein Jerry Frankel † Dede Harris | | |

List as of 5/21/25

THE BOB LUPONE FUND FOR ARTISTIC & AUDIENCE DEVELOPMENT

The Bob LuPone Fund for Artistic & Audience Development will support new play development and outreach initiatives to develop new audiences at MCC Theater, the theater company Bob co-founded and continuously co-led beginning in 1986.

| | | |
|--|---|---|
| \$50,000+ Claudia Hirsch The Charles & Lucille King Family Foundation Inc. | Judith Light David L. Lloyd & Meg Mortimer Marianne & Steven Mills Susan Raanan & Robert Fleischer Didi Rea Steve Richardson & Kirk Rubi No Guarantees | Leo Shull Charitable Fund for the Arts Steven Silverstein Bernie & Anne Telsey |
| \$10,000-\$49,999 Anonymous Carol G. Deane Peter Hedges & Susan Bruce | | \$5,000-\$9,999 Melvin & Linda Brosterman Lewis Cole Barbara Doran |

Cathy Glaser &
Steve Semlitz
Peter & Anne Most
Mary Carol Rudin
Joan Weingarten &
Bob Donnalley Gift Fund

\$1,000-\$4,999

The Lambs Foundation
Elaine Bayless
Jan & Will Cantler
Steve & Liz Caspi
Peter Cole
Brittany Corsi
Lorie Cowne Levy &
Charles J. Levy, Jr.
Kurt Deutsch &
Rachel Martin
Michael Emmerman
Rachel & Melvin Epstein
Judith A. Garson &
Steven N. Rappaport
Gloria Gilbert Stoga
Jeff Grinspoon
Gary Hayes
Ruth & Stephen Hendel
Betsy & Wes Higgins
Susie & Harry Horgan
Ellen Jewett &
Richard Kauffman
Jolene & Mitch Julis
Paula Katz
Gina Leonetti
Susan Lichenstein &
John Rokacz
Toni Lubetsky
Julianna Margulies
Neil & Shelly Mitchell
Paul Morrissey
Dessie Moynihan
Eileen O’Hern Luby
Andrew Peltz
Karla Radke
Briana Richards
Meredith Robbins &
Eric Bornemann
Peter Craig Russell
Sherry Steiner Schwartz

Nico Sidoti &
Orlagh Cassidy
Jeff Sine
J Smits
Marilyn Sobel & Ben Cohen
Elizabeth Tavel
Elizabeth Warren
Lois Weinroth

\$250-\$999

Anonymous (2)
Laura Allen
Ole Andreassen
Stafford Arima
Janice & David Barnard
Michael Baumberger
Andrew Berman &
Silvia Spagnoli
Andy Blankenbuehler
Karen Braga
Marc Bryan-Brown
Geneva Carr
Nancy Carey Cassidy
Patricia Chambers
Dr. Donna Chirico
Any Cole
Daniel & Scottye Doucette
/ Lindsey
Jim Edwards
Jackie Eshet
Josh Everdell
Matthew Everett
Jody Falco &
Jeffrey Steinman
Halley Feiffer
Rosalind Fink
Elin Flack
Charles Gray in honor of
Bob LuPone
The Hansen Family
Corey Hawkins
Diane Hayden
Jana Herzenberg &
Leonore Herzenberg
John Homan
John Hopkins
Alan Ibbotson
Linda & David Kalodner

Jason Katims
Sue King
Deborah Kopinski
Elizabeth LaComb-Wolpert
Zahra Lahdak
Sue Leibman – Barking
Dog Entertainment
Kenny Leon
Ellen & Mark Levy
Catherine Maciariello
Corinne Maloney
Kathleen McCall
The McCarthy Family
Nello McDaniel
Amy McIntosh &
Jeff Toobin
Anita Merk
Virginia & Timothy
Millhiser
Bonnie Monte
Susan Nist
Mandy Oser
Marian Pardo
Mary Beth Peil
Lisa Pell
Max Ritter
Matthew Rooney
Billy Rosen
Greta Rothman
Posey Saenz
Bette Samuel
Joel Sandler
Andrea & Richard
Saperstein
Richard Shutran
Amy & Stephen Sills
Pat Skipper
Meg Staunton
Helene Stein
Jenni Swan
David & Peggy Tanner
Zanthe Taylor
Amy L. Weltman
Joan West
Nicholas White
Chef Yono &
Donna Purnomo

List as of 5/28/25

THE GARY PLATT INITIATIVE FOR NEW MUSICALS supports artistic development and production of new musicals.
STEVE RICHARDSON AND KIRK RUBI COLLEGE MENTORSHIP FUND supports MCC Youth Company college and career preparation activities.
ERIC ROSEDALE PLAYWRITING FUND supports the annual FreshPlay for the MCC Youth Company.
THE R&S SHULMAN FUND supports artistic development and production of new plays, with a focus on work by African American Playwrights

THE GARY PLATT INITIATIVE FOR NEW MUSICALS

The GARY PLATT INITIATIVE FOR NEW MUSICALS supports the costs of developmental readings, workshops, and new musical productions at MCC, with the goal of inspiring new voices and adding to the American musical theater canon.

The Initiative was formed in 2019 by Julie and Marc Platt and their family to honor the memory of their uncle and great-uncle, Gary, whose lifelong love of musical theater instilled in them a passion for this unique storytelling art form.



GAVIN CREEL in WALK ON THROUGH / photo by JOAN MARCUS

To learn more about THE GARY PLATT MUSICAL THEATER INITIATIVE, please contact Vinny Martini at (212) 727-7722 ext. 205 or vmartini@mcctheater.org

 **MCC**
THEATER